

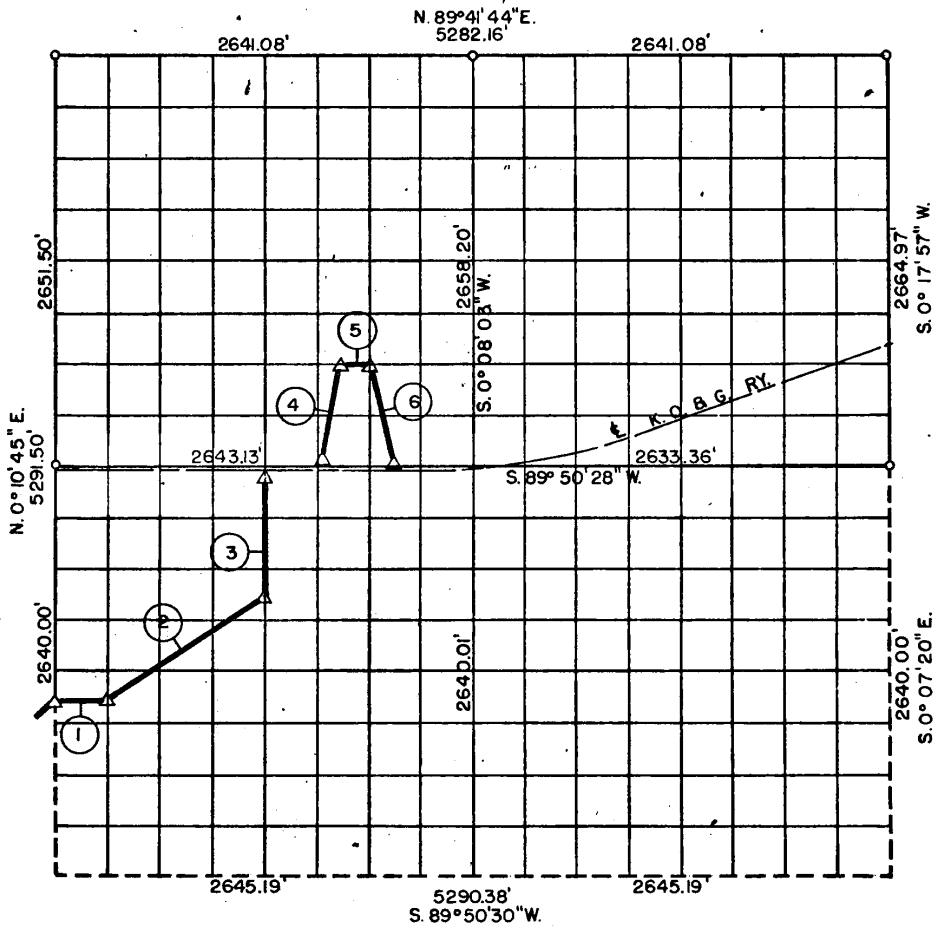
PARTIAL BOUNDARY SURVEYS

EUFAULA LAKE

DEEP FORK RIVER

Performed Under Contract Number DACW 56-75-C-0137

SEC. 23, T 12 N, R 14 E M&INTOSH COUNTY



Course No.	Distance	Bearing	Course No.	Distance	Bearing
1	330.54'	N. 89° 50' 29" E.			
2	1194.19'	N. 56° 17' 28" E.			
3	735.90'	N. 0° 09' 24" E.			
4	579.84'	N. 14° 06' 03" E.			
5	165.16'	N. 89° 48' 17" E.			
6	597.62'	S. 13° 50' 26" E.			

Field Book No. E 1220 Date: OCTOBER, 1975

PLUMMER-BRUMMETT, INC.
CONSULTING ENGINEERS & SURVEYORS
2504 E. 14th Pl., Tulsa, Okla., 74104, Tel. (918) 939-2251

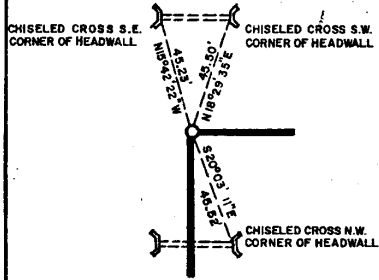
Under the Supervision of
U.S. ARMY ENGINEER DISTRICT, TULSA
CORPS OF ENGINEERS

33
CERTIFICATE OF SURVEY
I HEREBY CERTIFY THAT
THE ABOVE PLAT IS A TRUE AND
CORRECT REPRESENTATION
OF THE SURVEY MADE IN S
23, T 12 N, R 14 E, MC
COUNTY, OKLAHOMA.
REGISTERED LAND SURVEYOR

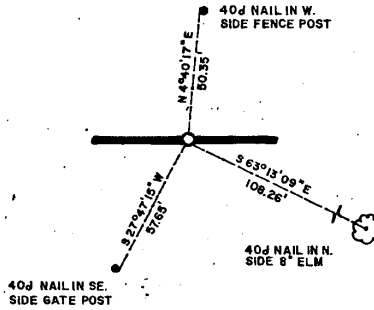
LEGEND
A MONUMENT
O ORIGINAL CORNER
O IRON PIN

EC. AULA LAKE
 DEEP FORK RIVER
 SECTION AND QUARTER SECTION CORNER
 REFERENCES FOR
 SEC. 23, T12 N, R14 E, M^CINTOSH COUNTY

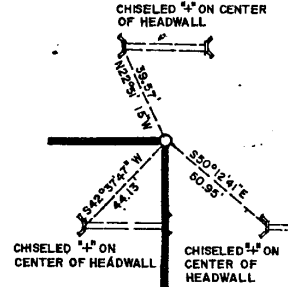
N.W. CORNER



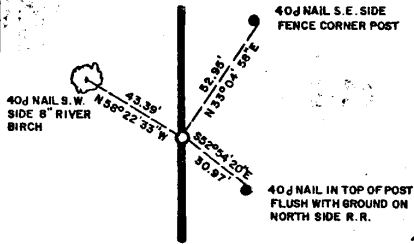
NORTH 1/4 COR.



N.E. CORNER

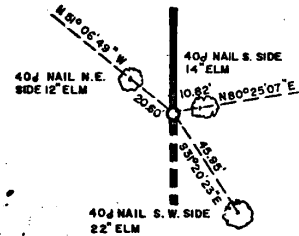


WEST 1/4 COR.



SCALE: 1" = 50'

EAST 1/4 COR.



S.W. CORNER

IN LAKE

SOUTH 1/4 COR.

IN LAKE

S.E. CORNER

IN LAKE

LEGEND

- Δ MONUMENT
- ORIGINAL CORNER
- IRON PIN

PLUMMER-BRUMMETT, INC.
 CONSULTING ENGINEERS & SURVEYORS
 2504 E. 41th Pl., Tulsa, Okla., 74104, Tel. (918) 939-2251

FIELD BOOK NO. E-1220

DATE: OCTOBER, 1975

Under the Supervision of
 U.S. ARMY ENGINEER DISTRICT, TULSA
 CORPS OF ENGINEERS

REGISTERED LAND SURVEYOR