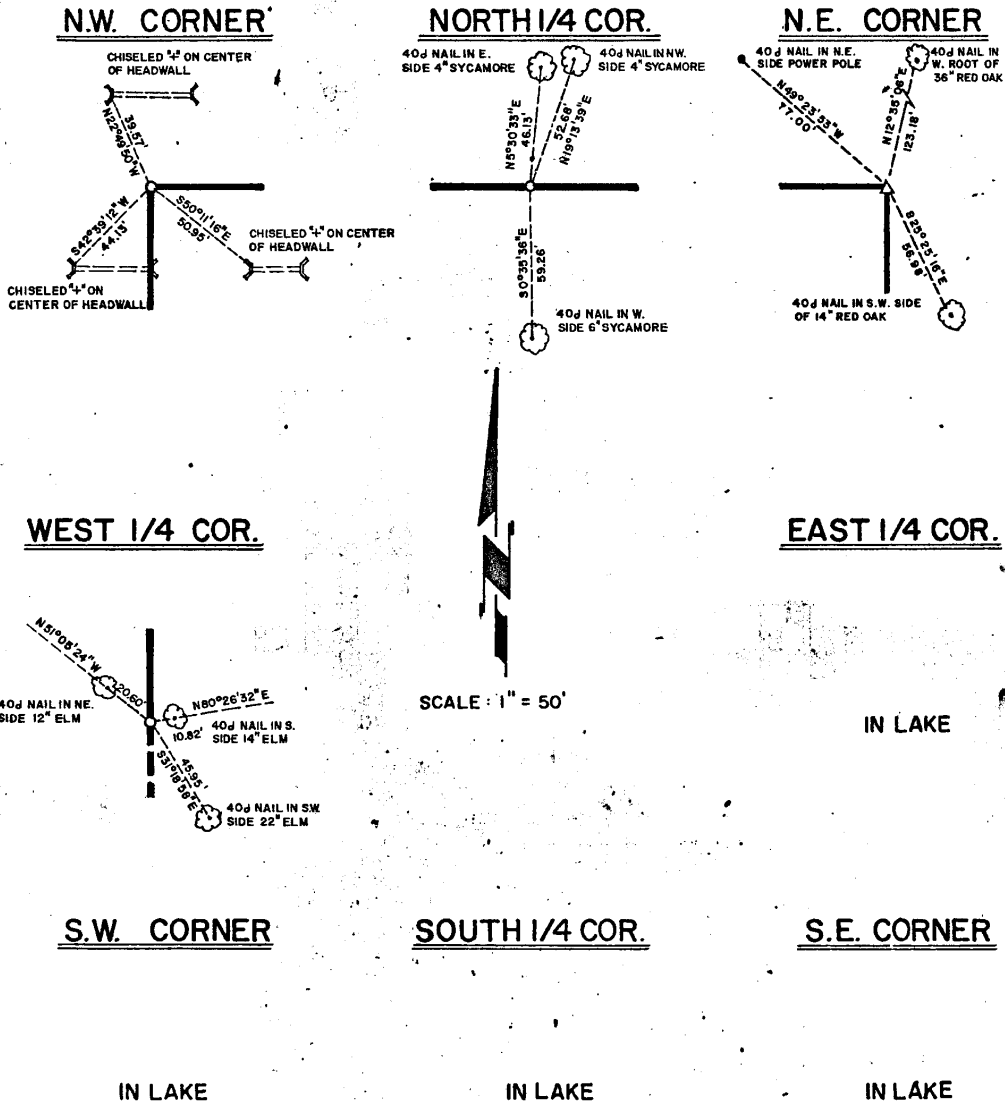


LAKE
DEEP FORK RIVER
SECTION AND QUARTER SECTION CORNER
REFERENCES FOR
SEC. 24, T 12 N, R 14 E, MCINTOSH COUNTY



LEGEND
 ▲ MONUMENT
 □ ORIGINAL CORNER
 ○ IRON PIN

PLUMMER-BRUMMETT, INC.
CONSULTING ENGINEERS & SURVEYORS
 2504 E. 14th Pl., Tulsa, Okla., 74104, Tel. (918) 939-2251

FIELD BOOK NO. E-1221
 DATE: OCTOBER, 1975

Under the Supervision of
U.S. ARMY ENGINEER DISTRICT, TULSA
CORPS OF ENGINEERS


 REGISTERED LAND SURVEYOR