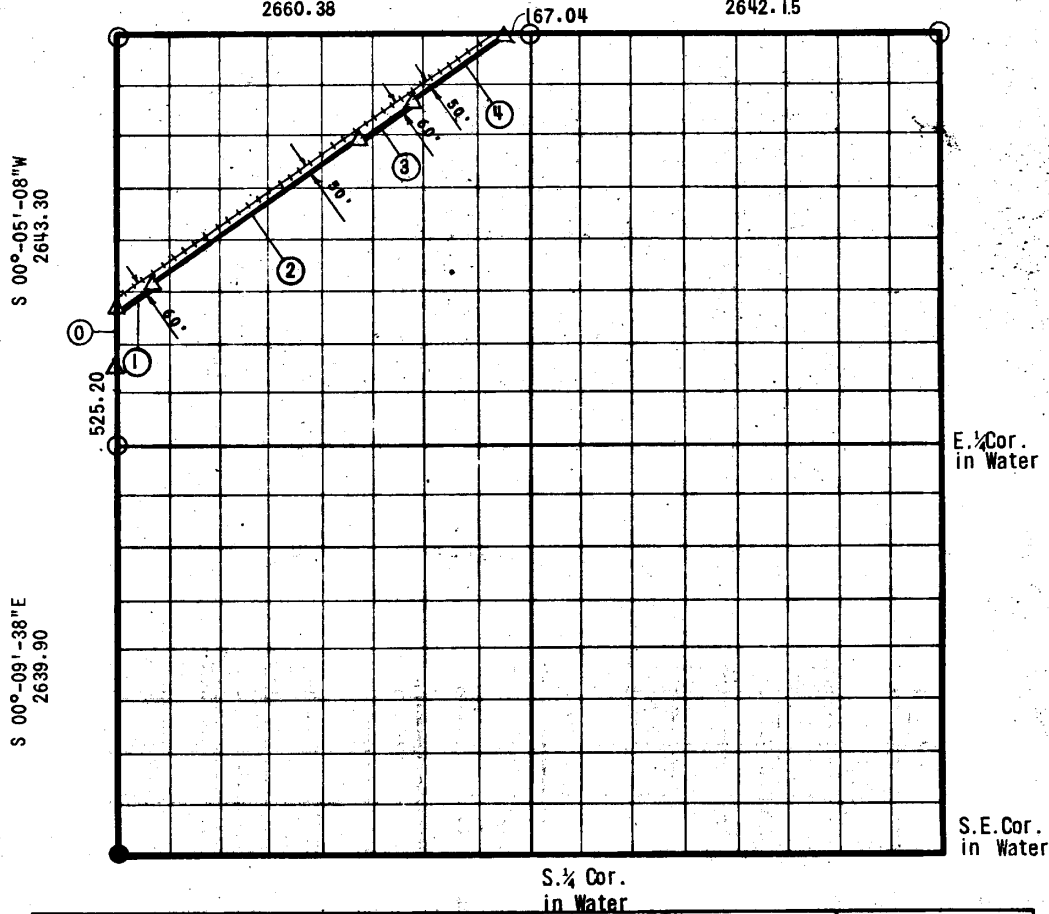


PARTIAL BOUNDARY SURVEYS
 EUFAULA RESERVOIR CANADIAN RIVER, OK. HOMA
 SEC. 28, T-12-N, R-14-E, OKMULGEE COUNTY, OKLAHOMA

S 89°-29' 16"E
 2660.38

S 89°-16'-37"W
 2642.15



COURSE NO.	DISTANCE	BEARING	COURSE NO.	DISTANCE	BEARING
0	366.72	N 00°-05'-08"E			
1	277.38	N 55°-27'-58"E			
2	1700.00	N 55°-27'-58"E			
3	400.00	N 55°-27'-58"E			
4	659.41	N 55°-27'-58"E			

Field Book No. E-1233

Date 15 Aug. 1975

BY GROSSMAN & KEITH ENGINEERING CO.
 FOR

DEPARTMENT OF THE ARMY, CORPS OF ENGINEERS, TULSA DISTRICT
 UNDER CONTRACT NO. DACW 56-75-C-0132

I, Guy N. Keith, a Registered Land Surveyor in the State of Oklahoma, do hereby certify that the above plot is a true and accurate survey of Section 28, T-12-N, R-14-E as made under my supervision.

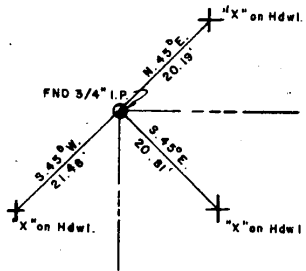
LEGEND

- Δ Std. C. of E. Conc. Monument
- Iron Pin Found
- Iron Pin Set

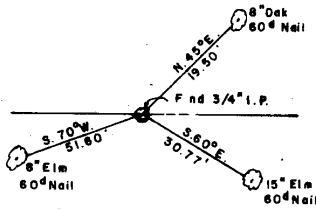
Guy N. Keith

AREA " EUFAULA LAKE
CANADIAN RIVER, OKLAHOMA
SECTION AND QUARTER SECTION CORNER
REFERENCES FOR
SECTION 28, T-12-N, R-14-E
OKMULGEE COUNTY, OKLAHOMA

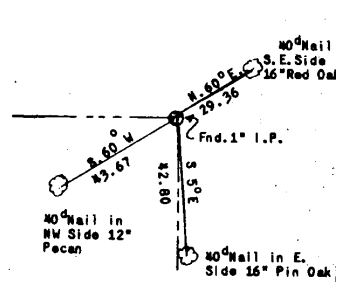
N. W. CORNER



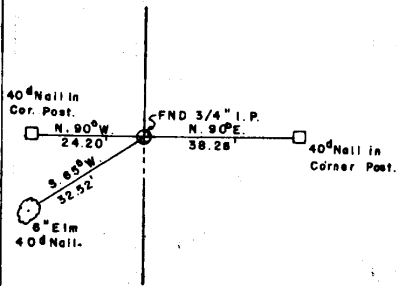
NORTH 1/4 CORNER



N. E. CORNER



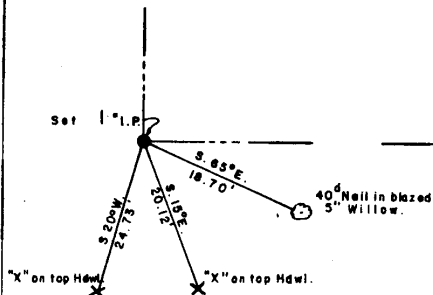
WEST 1/4 CORNER



EAST 1/4 CORNER

Corner under water.

S. W. CORNER



SOUTH 1/4 CORNER

Corner under water.

S. E. CORNER

Corner under water.

LEGEND

- C. of E. Conc.
- △ MONUMENT
- Iron Pins Found
- IRON PIN Set
- Stones Found

Date: August 15, 1975