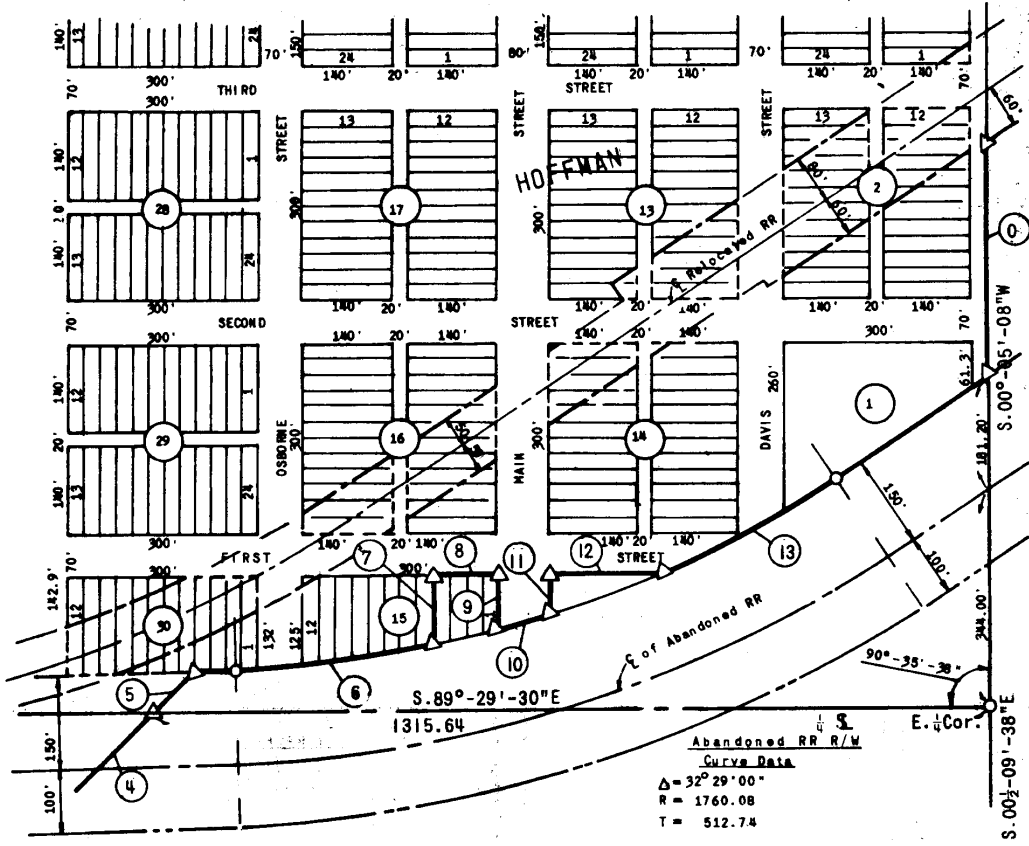




PARTIAL BOUNDARY SURVEYS SHEET 2 of 2  
 EUFAULA RESERVOIR, CANADIAN RIVER, OKLAHOMA  
 SEC. 29, T-12-N, R-14-E, OKMULGEE COUNTY, OKLAHOMA



COURSE NO.	DISTANCE	BEARING	COURSE NO.	DISTANCE	BEARING
5	102.04	N 44°-49'-25\"E			
6	65.73	N 88°-28'-10\"E			
	307.52 Arc Length				
7	113.77	N 00°-10'-20\"W			
8	100.00	N 89°-49'-40\"E			
9	90.61	S 00°-10'-20\"E			
10	83.26 Arc Length				
11	67.57	N 00°-10'-20\"W			
12	180.20	N 89°-49'-40\"E			
13	311.86 Arc Length				
	292.30	N 55°-59'-10\"E			
0	366.72	N 00°-05'-08\"E			

Field Book No. E-1234

Date 15 Aug. 1975

BY GROSSMAN & KEITH ENGINEERING CO.

FOR

DEPARTMENT OF THE ARMY, CORPS OF ENGINEERS, TULSA DISTRICT  
 UNDER CONTRACT NO. DACW 56-75-C-0132

I, Guy N. Keith, a Registered Land Surveyor in the State of Oklahoma, do hereby certify that the above plat is a true and accurate survey of Section 29, T-12-N, R-14-E as made under my supervision.

*Guy N. Keith*  
 Reg. No. 541 (Oklahoma)

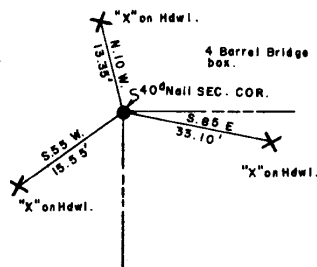
LEGEND

- △ Std. C. of E. Conc. Monument
- Iron Pin Found
- Iron Pins Set
- Stones Found

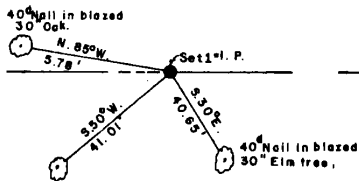
AREA "A" EUFAULA LAKE  
 CANADIAN RIVER, OKLAHOMA  
 SECTION AND QUARTER SECTION CORNER  
 REFERENCES FOR  
 SECTION 29, T-12-N, R-14-E  
 OKMULGEE COUNTY, OKLAHOMA

FIELD BOOK NO.  
 E - 1234

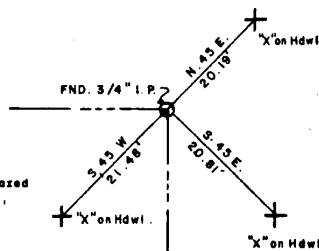
N. W. CORNER



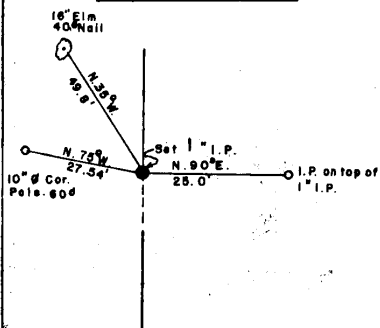
NORTH 1/4 CORNER



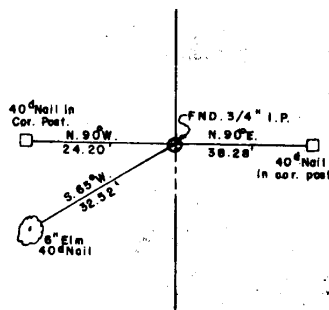
N. E. CORNER



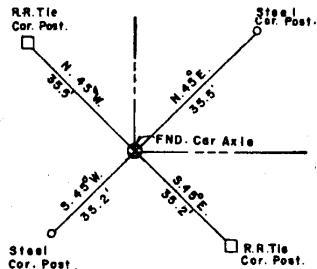
WEST 1/4 CORNER



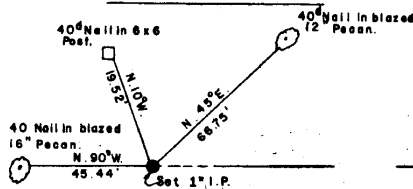
EAST 1/4 CORNER



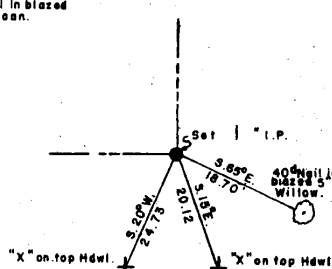
S. W. CORNER



SOUTH 1/4 CORNER



S. E. CORNER



- LEGEND  
 △ MONUMENT C. of E.  
 ○ Iron Pins Found  
 ● IRON PIN Set  
 □ Stones Found

Date: August 15, 1975