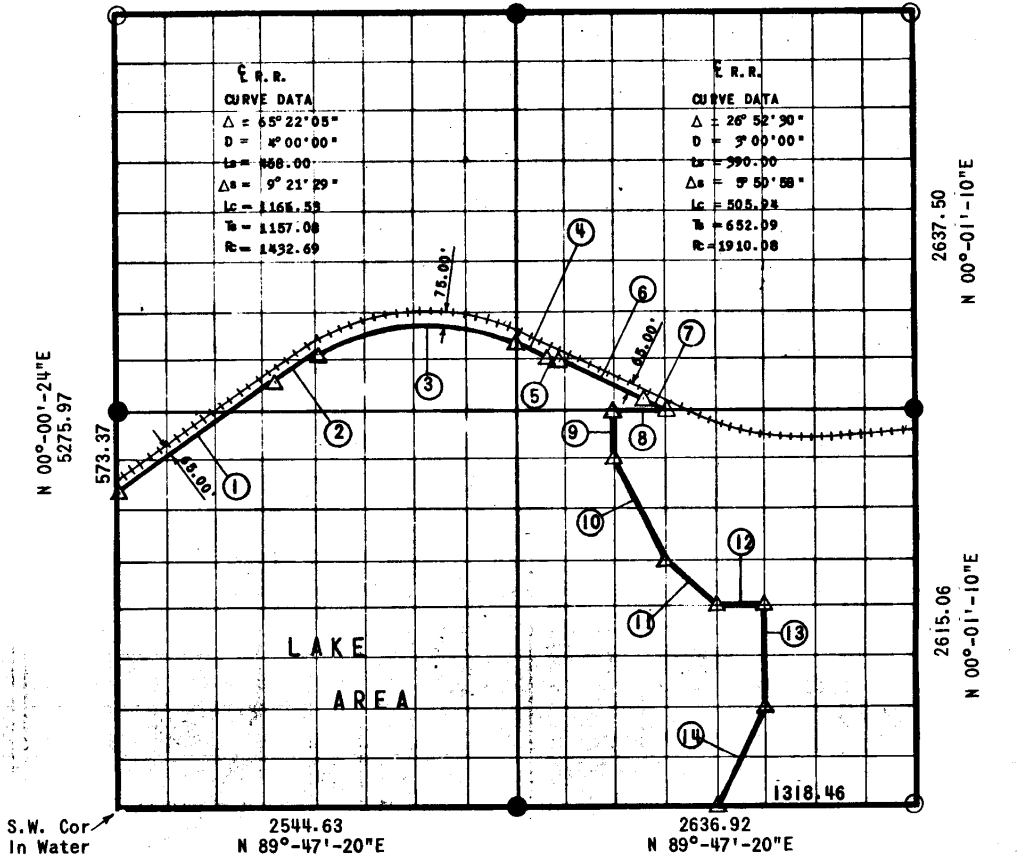


PARTIAL BOUNDARY SURVEYS
 EUFAULA RESERVOIR CANADIAN RIVER, OK .HOMA
 SEC.30 , T-12-N, R-14-E, OKMULGEE COUNTY, OKLAHOMA
 § 89°-57'-04"E § 89°-57'-04"E
 2453.85 2727.89



COURSE NO	DISTANCE	BEARING	COURSE NO	DISTANCE	BEARING
1	1103.59	N 50°-02'-38"E	14	732.39	S 26°-23'-24"W
2	426.49	Spiral (on RR C)			
3	41.51 Spiral, 1166.53 Curve, 230.96 Spiral (on RR C)				
4	237.04	Spiral (on RR C)			
5	23.43	S 64°-35'-17"E			
6	749.78	S 64°-35'-17"E			
7	101.31	Spiral (on RR C)			
8	328.80	N 89°-57'-27"W			
9	328.02	S 00°-43'-42"E			
10	739.28	S 27°-30'-45"E			
11	469.01	S 45°-44'-35"E			
12	332.45	N 89°-54'-56"E			
13	654.87	S 00°-21'-26"E			

Field Book No. E-1235 Date 15 Aug. 1975

BY GROSSMAN & KEITH ENGINEERING CO.
 FOR

DEPARTMENT OF THE ARMY, CORPS OF ENGINEERS, TULSA DISTRICT
 UNDER CONTRACT NO. DACW 56-75-C-0132

I, Guy N. Keith, a Registered Land Surveyor in the State of Oklahoma, do hereby certify that the above plat is a true and accurate survey of Section 30, T-12-N, R-14-E as made under my supervision.

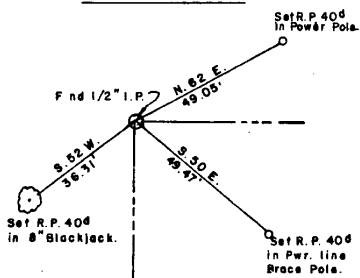
Guy N. Keith
 Reg. No. 547 (Oklahoma)

- LEGEND
- Δ Std. C. of E. Conc. Monument
 - Iron Pin Found
 - Iron Pins Set
 - Stones Found

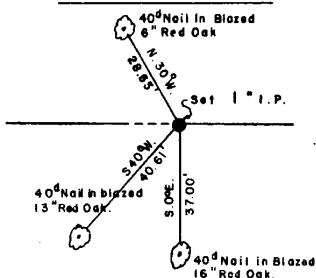
AREA 1/4 EUFAULA LAKE
CANADIAN RIVER, OKLAHOMA
SECTION AND QUARTER SECTION CORNER
REFERENCES FOR
SECTION 30, T-12-N, R-14-E
OKMULGEE COUNTY, OKLAHOMA

FIELD BOOK NO.
E - 1235

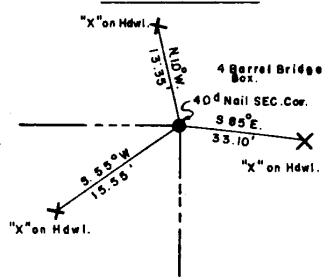
N. W. CORNER



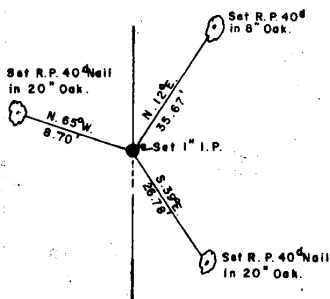
NORTH 1/4 CORNER



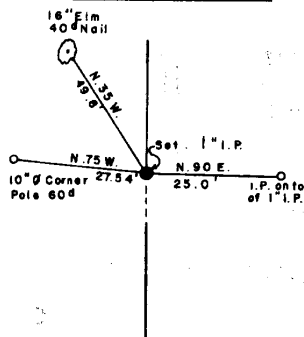
N. E. CORNER



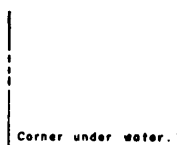
WEST 1/4 CORNER



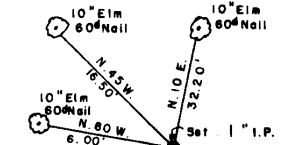
EAST 1/4 CORNER



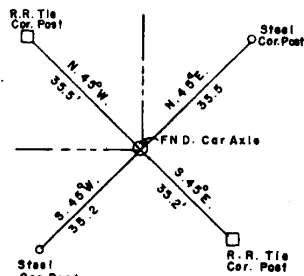
S. W. CORNER



SOUTH 1/4 CORNER



S. E. CORNER



- LEGEND**
- △ MONUMENT C. of E.
 - Iron Pins Found
 - IRON PIN Set
 - Stones Found

Date: August 15, 1975