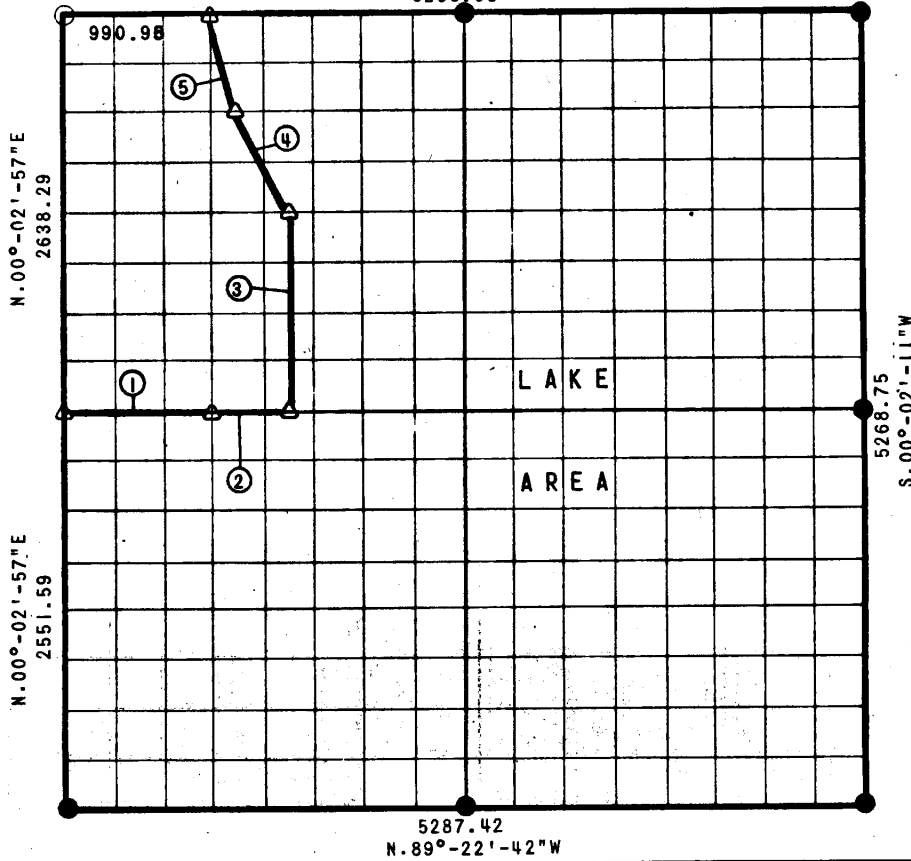


PARTIAL BOUNDARY SURVEYS
 EUFAULA RESERVOIR, CANADIAN RIVER, OKLAHOMA
 SEC. 32, T-12-N, R-14-E, OKMULGEE COUNTY, OKLAHOMA

N. 89°-46'-01"E
 5285.08



COURSE NO.	DISTANCE	BEARING	COURSE NO.	DISTANCE	BEARING
1	991.16	N. 89°-43'-09"E			
2	495.58	N. 89°-43'-09"E			
3	1318.60	N. 00°-02'-33"E			
4	735.92	N. 26°-37'-43"W			
5	678.94	N. 14°-02'-05"W			

Field Book No. E - 1237

Date 15 Aug. 1975

BY GROSSMAN & KEITH ENGINEERING CO.
 FOR

DEPARTMENT OF THE ARMY, CORPS OF ENGINEERS, TULSA DISTRICT
 UNDER CONTRACT NO. DACW 56-75-C-0132

I, Guy N. Keith, a Registered Land Surveyor in the State of Oklahoma, do hereby certify that the above plat is a true and accurate survey of Section 32, T-12-N, R-14-E as made under my supervision.

Guy N. Keith
 Reg. No. 547 (Oklahoma)

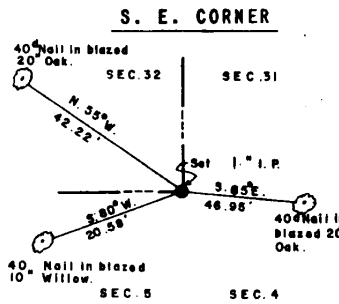
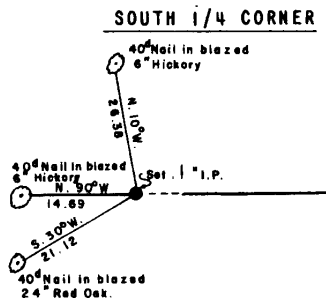
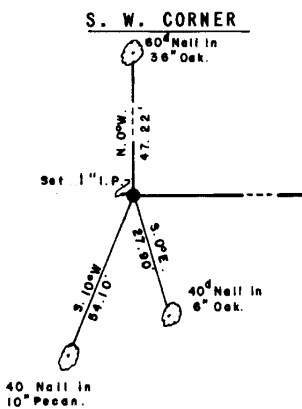
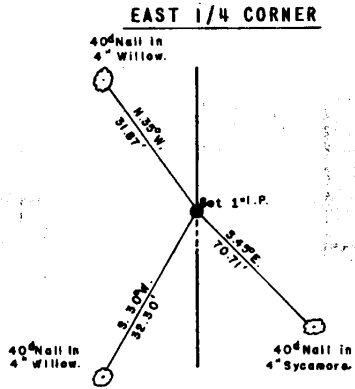
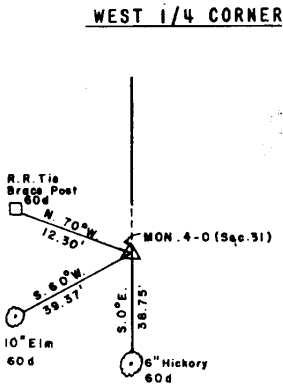
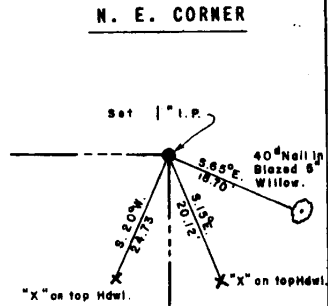
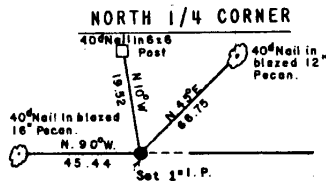
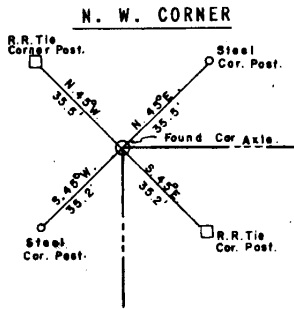
LEGEND

- △ Std. C. of E. Conc. Monument
- Iron Pin Found
- Iron Pins Set
- Stones Found

OKMULGEE COUNTY, OKLAHOMA

AREA " EUFAULA LAKE
 CANADIAN RIVER, OKLAHOMA
 SECTION AND QUARTER SECTION CORNER
 REFERENCES FOR
 SECTION 32, T-12-N, R-14-E
 OKMULGEE COUNTY, OKLAHOMA

ELD BOOK NO.
 E - 1237



- LEGEND**
- △ MONUMENT C. of E.
 - Iron Pins Found
 - IRON PIN Set
 - Stones Found

Date: August 15, 1975