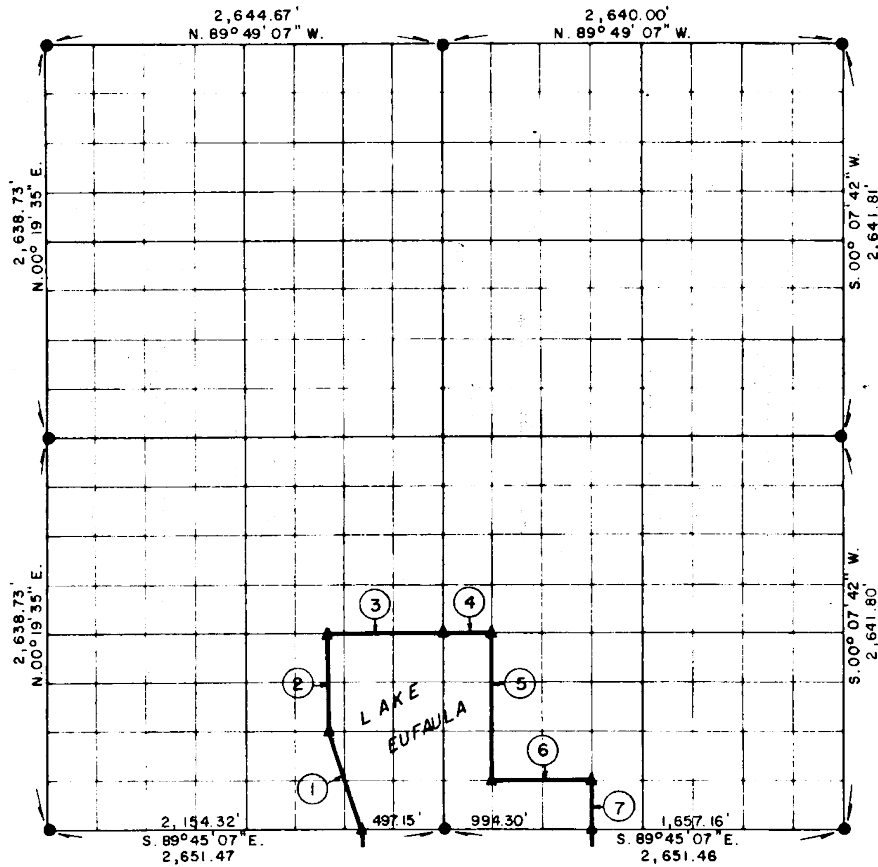


**PARTIAL BOUNDARY SURVEYS  
EUFAULA LAKE  
OKLAHOMA**

Performed Under Contract Number DACW 56-76-C-0238

SEC. 12, T. 12 N., R. 15 E., COUNTY McINTOSH



Course No.	Distance	Bearing	Course No.	Distance	Bearing
1.	738.35'	N. 26° 23' 47\" W.			
2.	659.94'	N. 00° 16' 32\" E.			
3.	828.05'	S. 89° 46' 07\" E.			
4.	331.07'	S. 89° 46' 07\" E.			
5.	990.17'	S. 00° 14' 13\" W.			
6.	662.69'	S. 89° 45' 22\" E.			
7.	330.10'	S. 00° 12' 21\" W.			

CERTIFICATE OF SURVEY  
 I hereby certify that the above plat is a true and correct representation of the survey made in Section 12, T. 12 N., R. 15 E., McIntosh County, Oklahoma.  
*Frank P. Rivera*  
 Registered Professional Engineer  
 Registered Land Surveyor

Field Book No. E 1263 Date MARCH, 1977  
**MAPCO ENGINEERING CORPORATION**  
 Under the Supervision of  
**U.S. ARMY ENGINEER DISTRICT, TULSA**  
**CORPS OF ENGINEERS**  
 SHEET 1 of 2

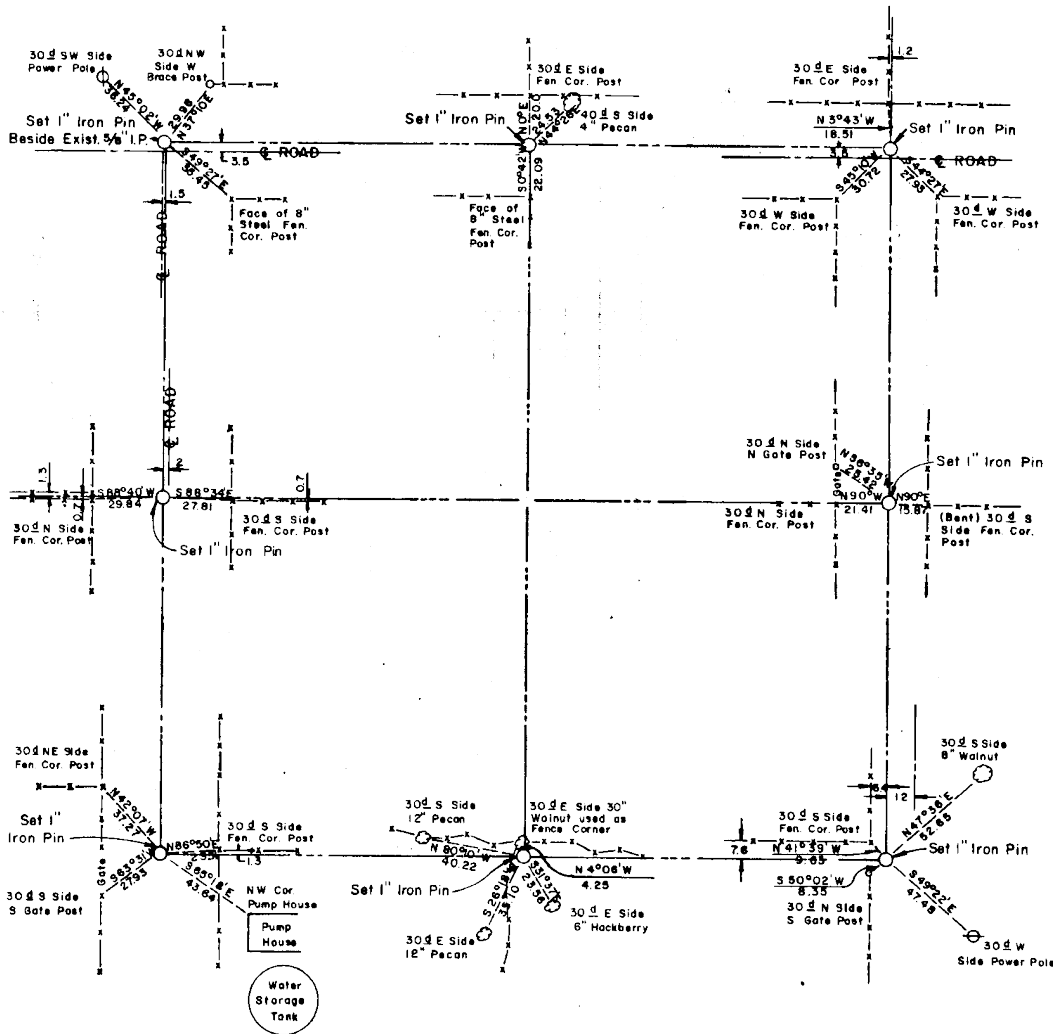
LEGEND  
 ▲ MONUMENT  
 □ ORIGINAL CORNER  
 ○ IRON PIN

12

# EUFAULA LAKE OKLAHOMA

SECTION AND QUARTER SECTION CORNER  
REFERENCES FOR

SEC. 12 , T 12 N, R15E      COUNTY- McINTOSH



Scale 1" = 50'  
Date: March, 1977  
Field book No. E 1263

**LEGEND**

- Δ - Monument
- - Original Corner
- - Iron pin