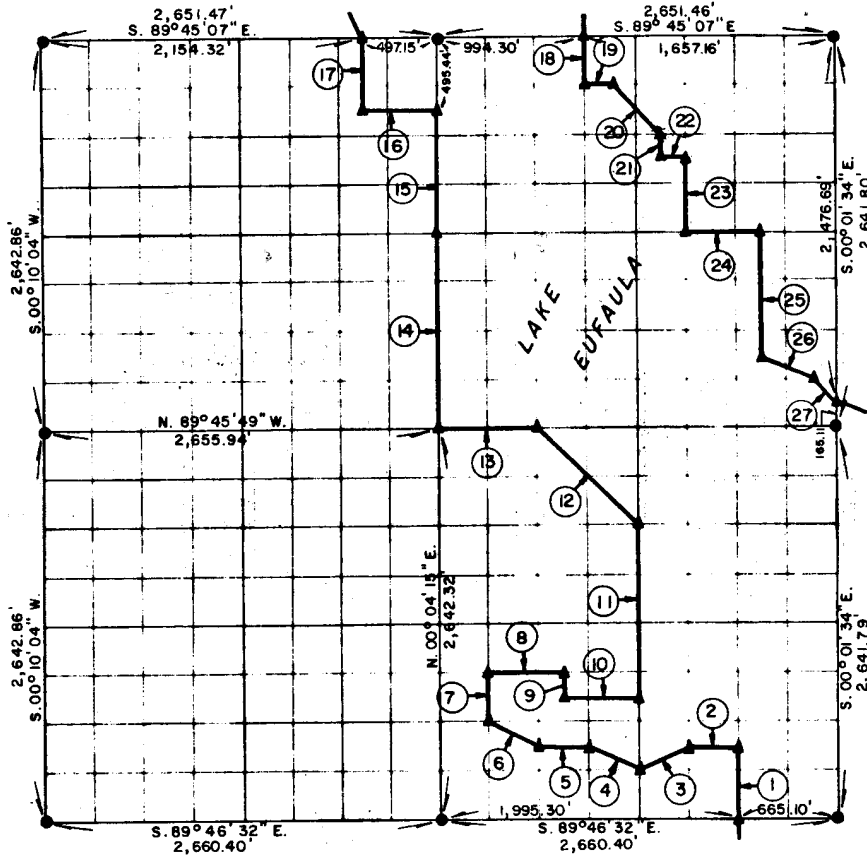


**PARTIAL BOUNDARY SURVEYS
EUFULA LAKE
OKLAHOMA**

Performed Under Contract Number DACW 56-76-C-0238

SEC. 13, T. 12 N., R. 15 E., COUNTY McINTOSH



Course No.	Distance	Bearing	Course No.	Distance	Bearing
1.	495.36'	N.00°00'08" W.	15.	825.73'	N.00°04'15" E.
2.	332.45'	N.89°46'25" W.	16.	497.31'	N.89°45'15" W.
3.	370.66'	S.63°46'19" W.	17.	495.46'	N.00°05'20" E.
4.	371.72'	N.63°24'00" W.	18.	330.27'	S.00°02'04" W.
5.	332.45'	N.89°46'25" W.	19.	165.75'	S.89°45'12" E.
6.	371.64'	N.63°23'28" W.	20.	468.87'	S.44°58'35" E.
7.	330.28'	N.00°03'32" E.	21.	165.13'	S.00°00'58" W.
8.	498.51'	S.89°46'17" E.	22.	165.80'	S.89°45'20" E.
9.	165.13'	S.00°02'26" W.	23.	495.37'	S.00°00'37" W.
10.	498.56'	S.89°46'19" E.	24.	497.57'	S.89°45'28" E.
11.	1,155.90'	N.00°01'21" E.	25.	825.59'	S.00°00'29" E.
12.	938.31'	N.45°01'12" W.	26.	371.36'	S.63°21'45" E.
13.	663.98'	N.89°45'49" W.	27.	234.65'	S.45°02'19" E.
14.	1,321.16'	N.00°04'15" E.			

Date MARCH, 1977

CERTIFICATE OF SURVEY

I hereby Certify That The Above Plat is a True and Correct Representation of The Survey Made in Section 13, T. 12 N., R. 15 E., COUNTY McINTOSH, OKLAHOMA

Frank P. Piers
Registered Professional Engineer
Registered Land Surveyor

Field Book No. E1264
MAPCO ENGINEERING CORPORATION

Under The Supervision Of

**U.S. ARMY ENGINEER DISTRICT, TULSA
CORPS OF ENGINEERS**

SHEET 1 of 2

LEGEND

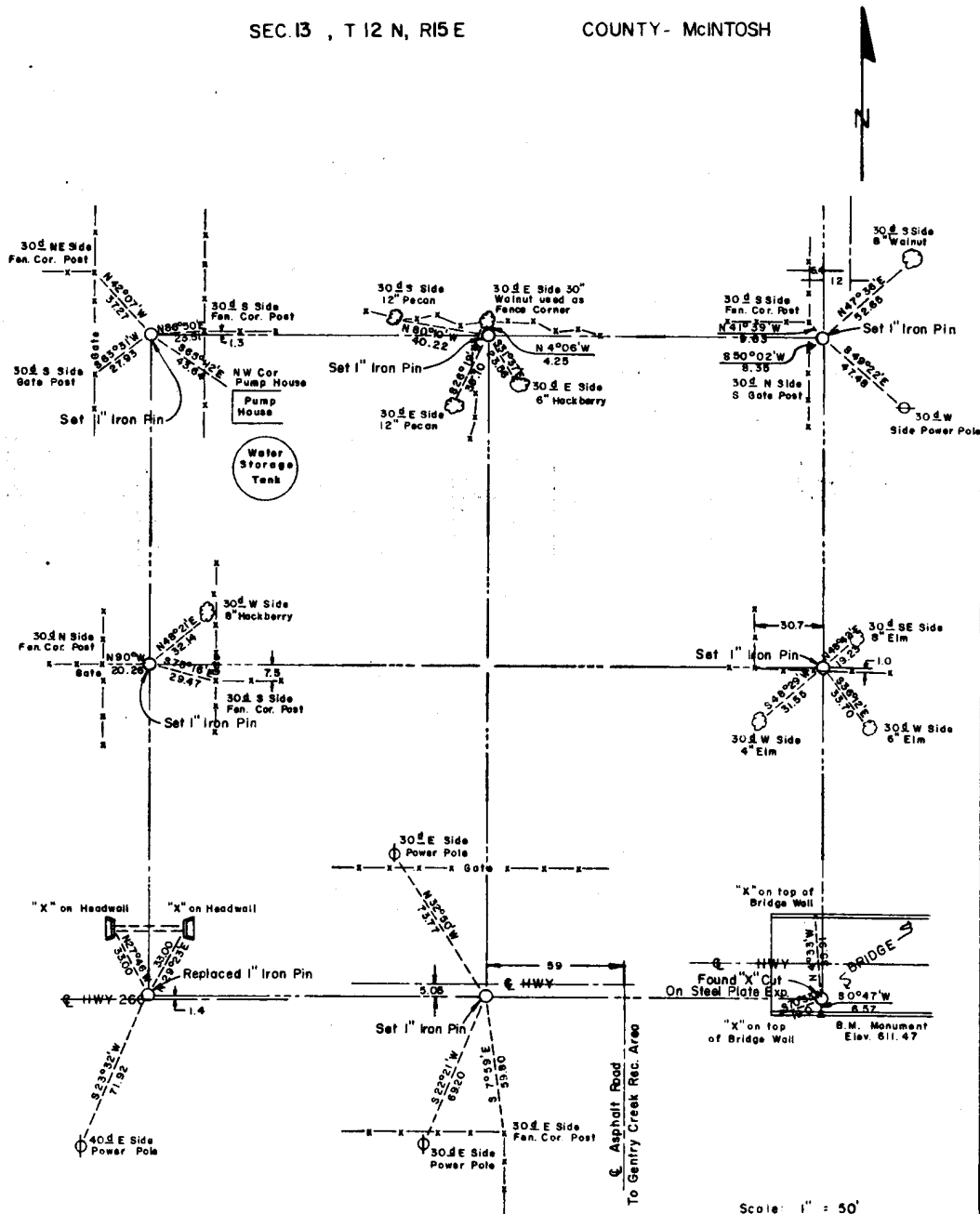
- ▲ MONUMENT
- ORIGINAL CORNER
- IRON PIN

24

EUFAULA LAKE OKLAHOMA

SECTION AND QUARTER SECTION CORNER
REFERENCES FOR

SEC. 13 , T 12 N, R 15 E COUNTY - MCINTOSH



Scale: 1" = 50'
Date: March, 1977
Field book No E1264

- LEGEND**
- △ - Monument
 - - Original Corner
 - - Iron pin