

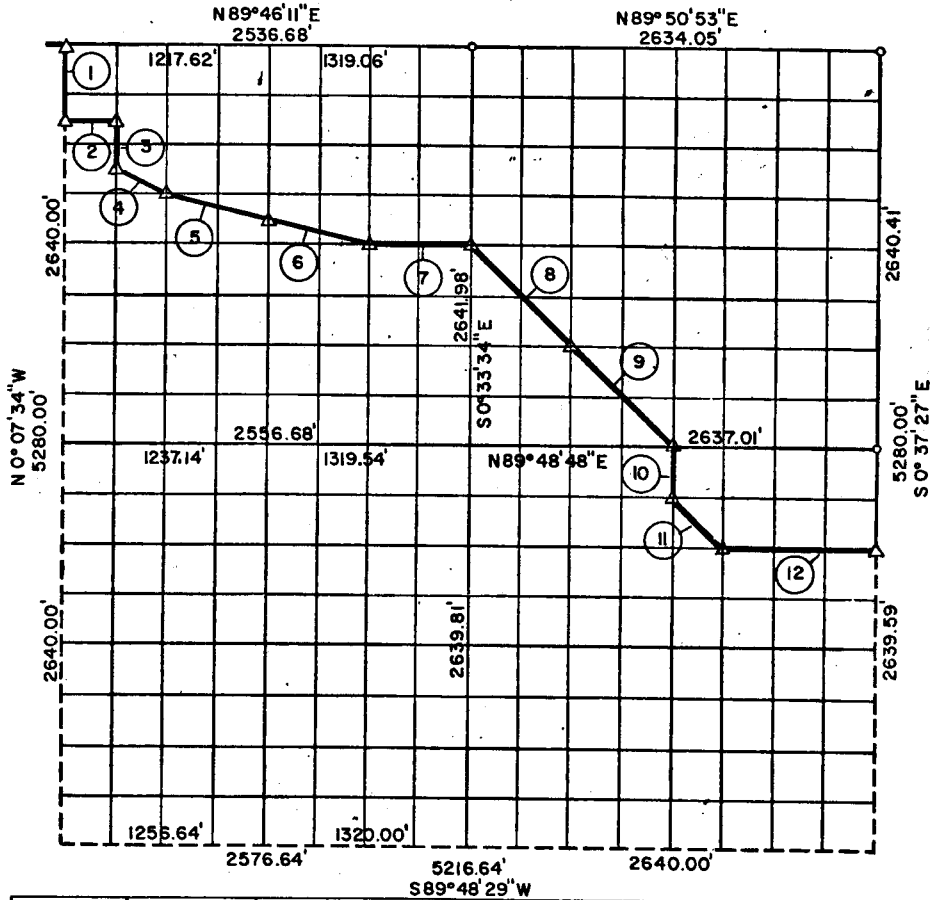
PARTIAL BOUNDARY SURVEYS

EUFAULA LAKE

DEEP FORK RIVER

Performed Under Contract Number DACW 56-75-C-0137

SEC. 19, T12 N, R15 E MCINTOSH COUNTY



Course No.	Distance	Bearing	Course No.	Distance	Bearing
1	495.00'	S 0° 07' 34" E			
2	305.32'	N 89° 46' 39" E			
3	330.03'	S 0° 13' 54" E			
4	347.91'	S 61° 53' 59" E			
5	635.26'	S 75° 09' 14" E			
6	680.94'	S 76° 10' 49" E			
7	659.65'	N 89° 47' 30" E			
8	936.17'	S 45° 18' 27" E			
9	936.30'	S 45° 19' 55" E			
10	329.96'	S 0° 35' 31" E			
11	468.11'	S 45° 22' 06" E			
12	989.16'	N 89° 48' 43" E			

Field Book No. E 1224

Date: OCTOBER, 1975

LEGEND
MONUMENT
ORIGINAL CORNER
IRON PIN

PLUMMER-BRUMMETT, INC.
CONSULTING ENGINEERS & SURVEYORS
2504 E. 14th Pl., Tulsa, Okla., 74104, Tel. (918) 939-2251

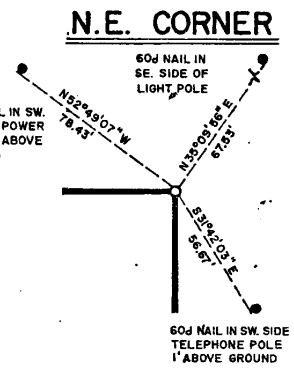
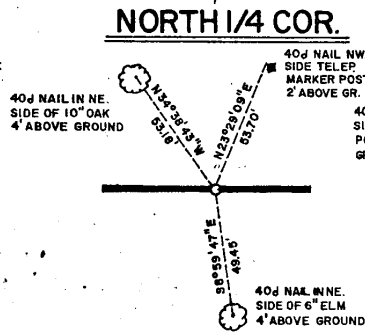
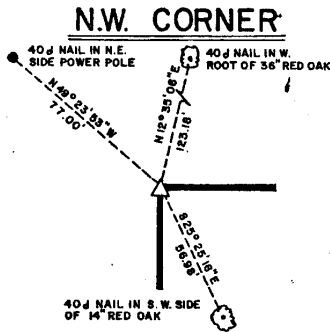
Under the Supervision of
U.S. ARMY ENGINEER DISTRICT, TULSA
CORPS OF ENGINEERS

CERTIFICATE OF SURVEY
I HEREBY CERTIFY THAT THE
ABOVE PLAT IS A TRUE AND
CORRECT REPRESENTATION OF
THE SURVEY MADE IN SECTION
19, T12 N, R15 E, MCINTOSH
COUNTY, OKLAHOMA.

REGISTERED LAND SURVEYOR

35

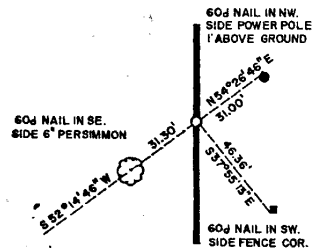
E AULA LAKE
 DEEP FORK RIVER
 SECTION AND QUARTER SECTION CORNER
 REFERENCES FOR
 SEC. 19 , T12 N, R15 E, M2INTOSH COUNTY



WEST 1/4 COR.

IN LAKE

EAST 1/4 COR.



SCALE: 1" = 50'

S.W. CORNER

IN LAKE

SOUTH 1/4 COR.

IN LAKE

S.E. CORNER

IN LAKE

- LEGEND**
- A MONUMENT
 - ORIGINAL CORNER
 - IRON PIN

PLUMMER-BRUMMETT, INC.
 CONSULTING ENGINEERS & SURVEYORS
 2504 E. 14th Pl., Tulsa, Okla., 74104, Tel. (918) 939-2251

FIELD BOOK NO. E-1224
 DATE: OCTOBER, 1975

Under the Supervision of
 U.S. ARMY ENGINEER DISTRICT, TULSA
 CORPS OF ENGINEERS

REGISTERED LAND SURVEYOR