

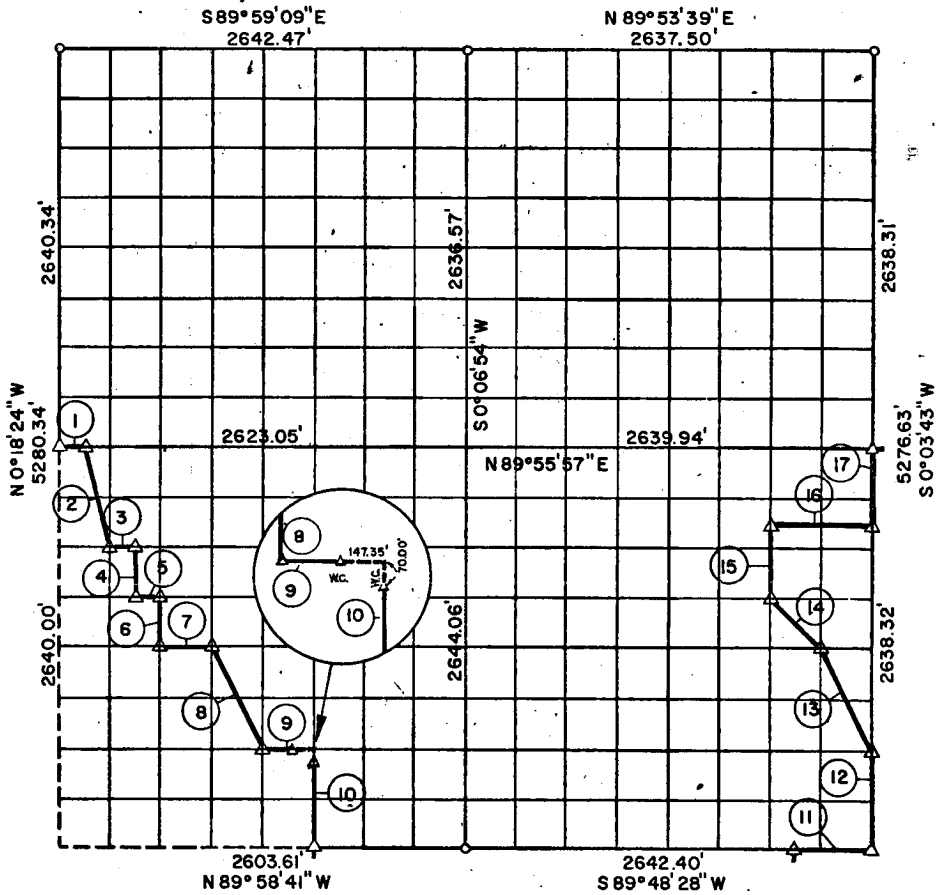
PARTIAL BOUNDARY SURVEYS

EUFAULA LAKE

DEEP FORK RIVER

Performed Under Contract Number DACW 56-75-C-0137

SEC. 21, T 12 N, R 15 E, MCINTOSH COUNTY



Course No.	Distance	Bearing	Course No.	Distance	Bearing
1	163.94'	N 89° 55' 57" E	13	736.60'	N 26° 33' 58" W
2	680.70'	S 14° 11' 22" E	14	465.93'	N 45° 02' 37" W
3	163.64'	N 89° 57' 16" E	15	494.96'	N 0° 04' 33" E
4	330.10'	S 0° 13' 39" E	16	660.10'	N 89° 54' 32" E
5	163.48'	N 89° 57' 57" E	17	494.69'	N 0° 03' 43" E
6	330.12'	S 0° 12' 03" E			
7	326.67'	N 89° 58' 37" E			
8	737.23'	S 26° 23' 51" E			
9	326.06'	N 89° 59' 58" E			
10	660.64'	S 0° 02' 36" E			
11	495.45'	N 89° 48' 28" E			
12	659.58'	N 0° 03' 43" E			

Field Book No. E 1225

Date: OCTOBER, 1975

- LEGEND**
- A MONUMENT
 - D ORIGINAL CORNER
 - C IRON PIN

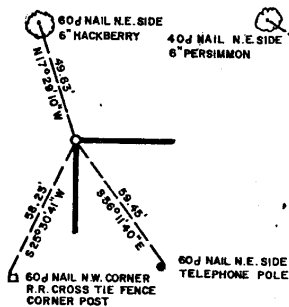
PLUMMER-BRUMMETT, INC.
 CONSULTING ENGINEERS & SURVEYORS
 2504 E. 14th Pl., Tulsa, Okla., 74104, Tel. (918) 939-2251

Under the Supervision of
 U.S. ARMY ENGINEER DISTRICT, TULSA
 CORPS OF ENGINEERS

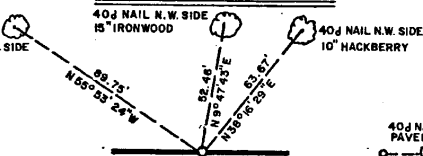
37
CERTIFICATE OF SURVEY
 I HEREBY CERTIFY THAT THE ABOVE PLAT IS A TRUE AND CORRECT REPRESENTATION OF THE SURVEY MADE IN SECTION 21, T 12 N, R 15 E, MCINTOSH COUNTY, OKLAHOMA.

F AULA LAKE
DEEP FORK RIVER
SECTION AND QUARTER SECTION CORNER
REFERENCES FOR
SEC. 21, T12 N, R15 E, M2INTOSH COUNTY

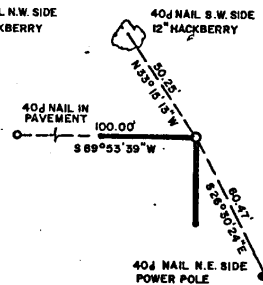
N.W. CORNER



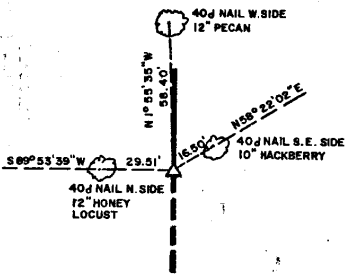
NORTH 1/4 COR.



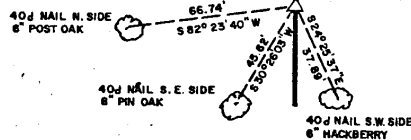
N.E. CORNER



WEST 1/4 COR.



EAST 1/4 COR.

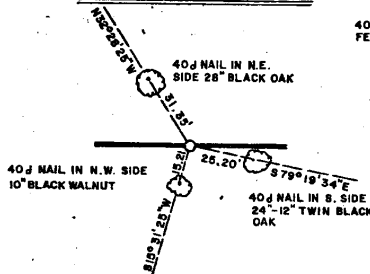


SCALE: 1" = 50'

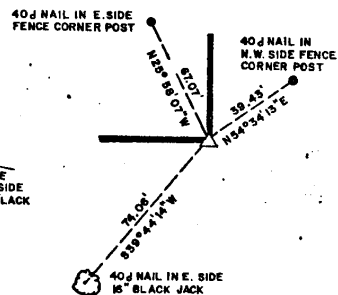
S.W. CORNER

IN LAKE

SOUTH 1/4 COR.



S.E. CORNER



- LEGEND**
- A MONUMENT
 - D ORIGINAL CORNER
 - O IRON PIN

PLUMMER-BRUMMETT, INC.
CONSULTING ENGINEERS & SURVEYORS
 2504 E. 14th Pl., Tulsa, Okla., 74104, Tel. (918) 939-2251

FIELD BOOK NO. E-1225

DATE: OCTOBER, 1975

Under the Supervision of
U.S. ARMY ENGINEER DISTRICT, TULSA
CORPS OF ENGINEERS


 REGISTERED LAND SURVEYOR