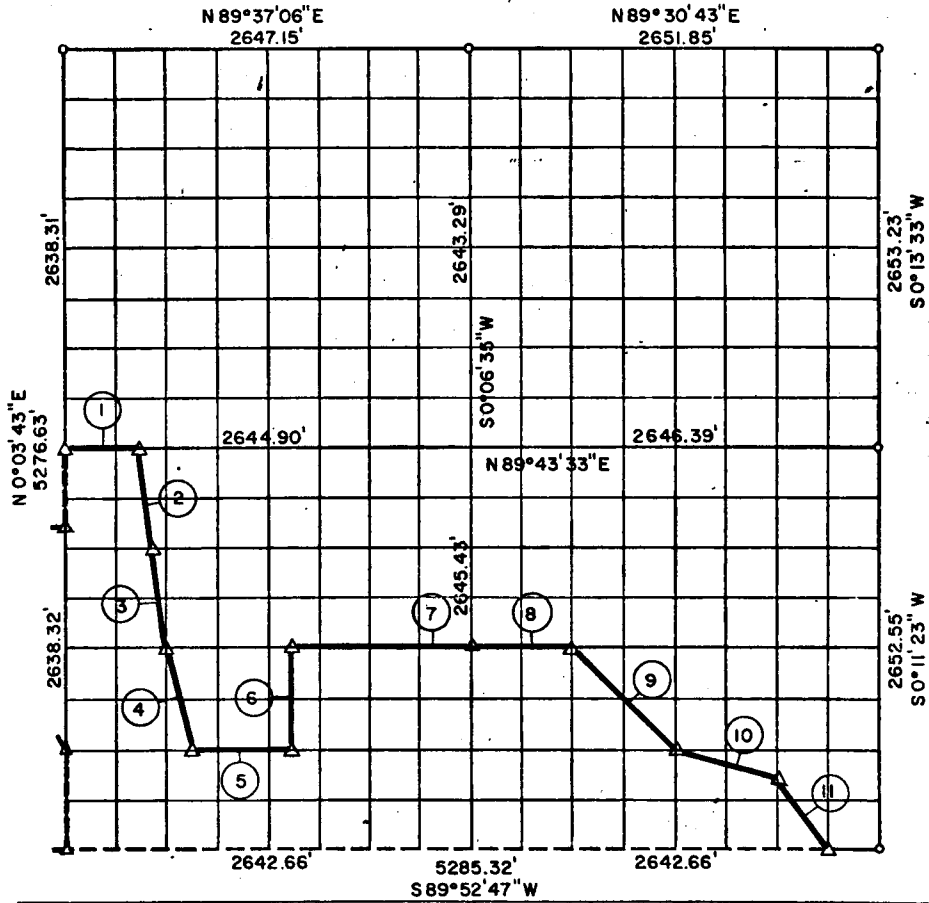


PARTIAL BOUNDARY SURVEYS
EUFAULA LAKE
DEEP FORK RIVER
Performed Under Contract Number DACW 56-75-C-0137
SEC. 22 , T 12 'N, R 15 E M&INTOSH COUNTY



Course No.	Distance	Bearing	Course No.	Distance	Bearing
1	495.92'	N 89° 43' 33" E			
2	664.63'	S 7° 04' 16" E			
3	664.73'	S 7° 04' 01" E			
4	679.74'	S 13° 59' 31" E			
5	660.81'	N 89° 50' 28" E			
6	660.58'	N 0° 05' 20" E			
7	1156.65'	N 89° 48' 10" E			
8	661.13'	N 89° 48' 10" E			
9	932.94'	S 44° 58' 31" E			
10	680.42'	S 76° 04' 00" E			
11	595.38'	S 33° 31' 42" E			

Field Book No. E 1227 Date: OCTOBER, 1975

PLUMMER-BRUMMETT, INC.
CONSULTING ENGINEERS & SURVEYORS
2504 E. 14th Pl., Tulsa, Okla., 74104, Tel. (918) 939-2251

Under the Supervision of
U.S. ARMY ENGINEER DISTRICT, TULSA
CORPS OF ENGINEERS

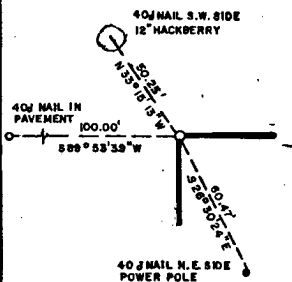
38
CERTIFICATE OF SURVEY
I HEREBY CERTIFY THAT THE ABOVE PLAT IS A TRUE AND CORRECT REPRESENTATION OF THE SURVEY MADE IN SECTION 22, T 12 N, R 15 E, MCINTOSH COUNTY, OKLAHOMA.

[Signature]
REGISTERED LAND SURVEYOR

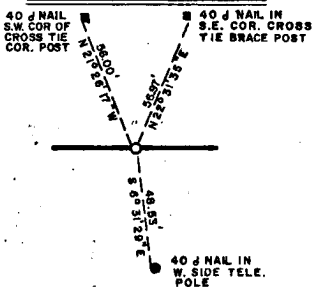
- LEGEND**
- ▲ MONUMENT
 - ORIGINAL CORNER
 - IRON PIN

E TULA LAKE
DEEP FORK RIVER
SECTION AND QUARTER SECTION CORNER
REFERENCES FOR
SEC. 22, T 12 N, R 15 E, MCINTOSH COUNTY

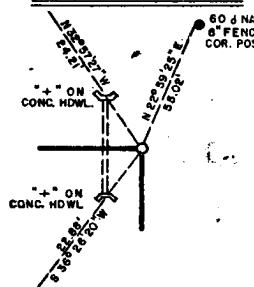
N.W. CORNER



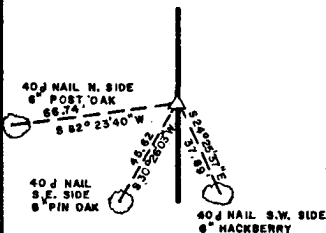
NORTH 1/4 COR.



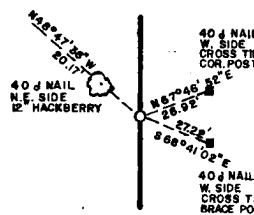
N.E. CORNER



WEST 1/4 COR.

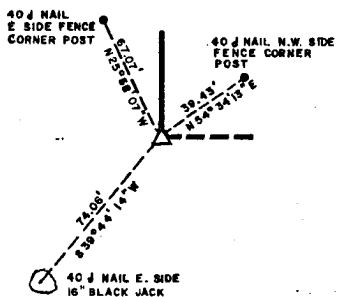


EAST 1/4 COR.



SCALE: 1" = 50'

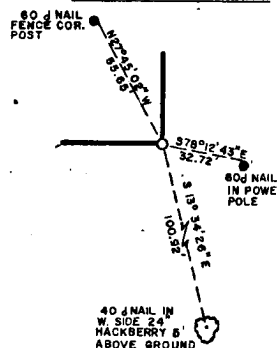
S.W. CORNER



SOUTH 1/4 COR.

IN LAKE

S.E. CORNER



- LEGEND
- A MONUMENT
 - D ORIGINAL CORNER
 - O IRON PIN

PLUMMER-BRUMMETT, INC.
CONSULTING ENGINEERS & SURVEYORS
2504 E. 14th Pl., Tulsa, Okla., 74104, Tel. (918) 939-2251

Under the Supervision of
U.S. ARMY ENGINEER DISTRICT, TULSA
CORPS OF ENGINEERS

FIELD BOOK NO. E-1227
DATE: OCTOBER, 1975

REGISTERED LAND SURVEYOR