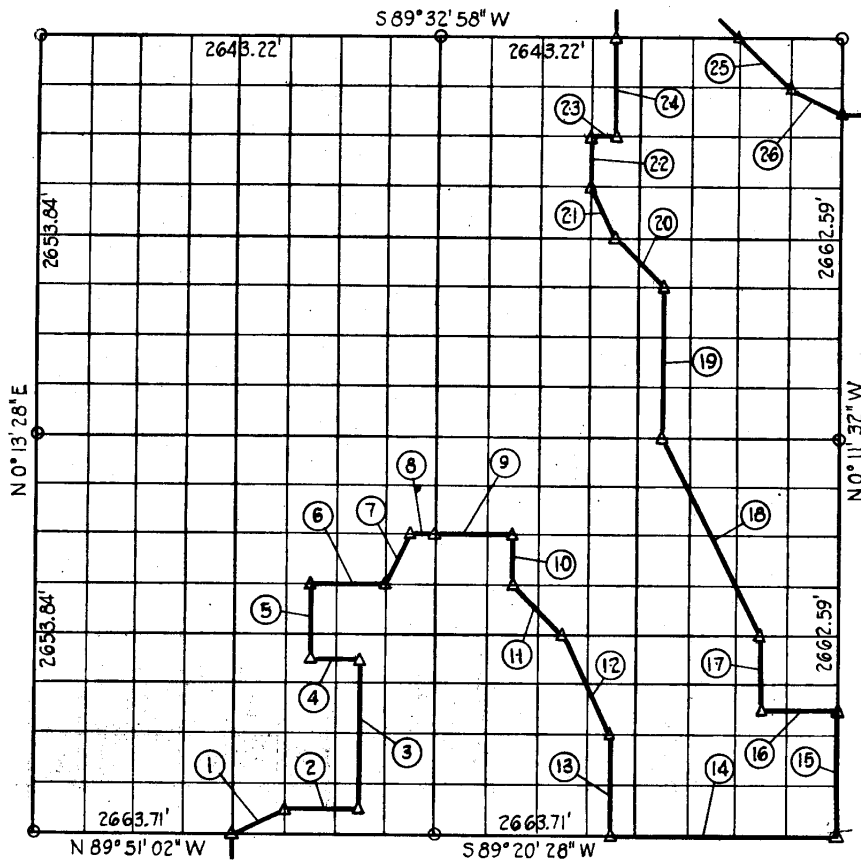


SEC. 23 T. 12 N R. 15 E COUNTY MEIN



Course Number	Distance	Bearing	Course Number	Distance	Bearing
1	372.24	N 63° 32' 00" E	15	832.06	N 0° 11' 32" W
2	499.33	S 89° 52' 54" E	16	499.43	S 89° 26' 15" W
3	1002.23	N 0° 03' 19" E	17	499.74	N 0° 09' 11" W
4	332.44	S 89° 55' 51" W	18	1486.35	N 26° 38' 19" W
5	500.58	N 0° 04' 52" E	19	997.75	N 0° 04' 30" W
6	498.32	N 89° 50' 14" E	20	468.89	N 45° 07' 10" W
7	373.92	N 26° 24' 14" E	21	370.52	N 26° 35' 44" W
8	166.03	N 89° 46' 29" E	22	332.48	N 0° 03' 43" W
9	492.03	N 89° 34' 11" E	23	165.37	N 89° 34' 28" E
10	334.29	S 0° 01' 23" E	24	665.03	N 0° 04' 30" W
11	469.40	S 45° 05' 45" E	25	467.77	S 45° 06' 17" E
12	743.53	S 26° 37' 23" E	26	369.52	S 63° 39' 45" E
13	667.67	S 0° 04' 30" E			
14	1478.34	N 89° 20' 28" E			

Book No. E-947

Date: Jan, 1965

39

I, Charles J. Finklea, a Registered Professional Engineer, do hereby certify that the above is a true and accurate survey of Sec. 23 T. 12 N. R. 15 E. as made under my supervision.

Charles J. Finklea
 Charles J. Finklea
 Reg. Prof. Eng'r. No 1063