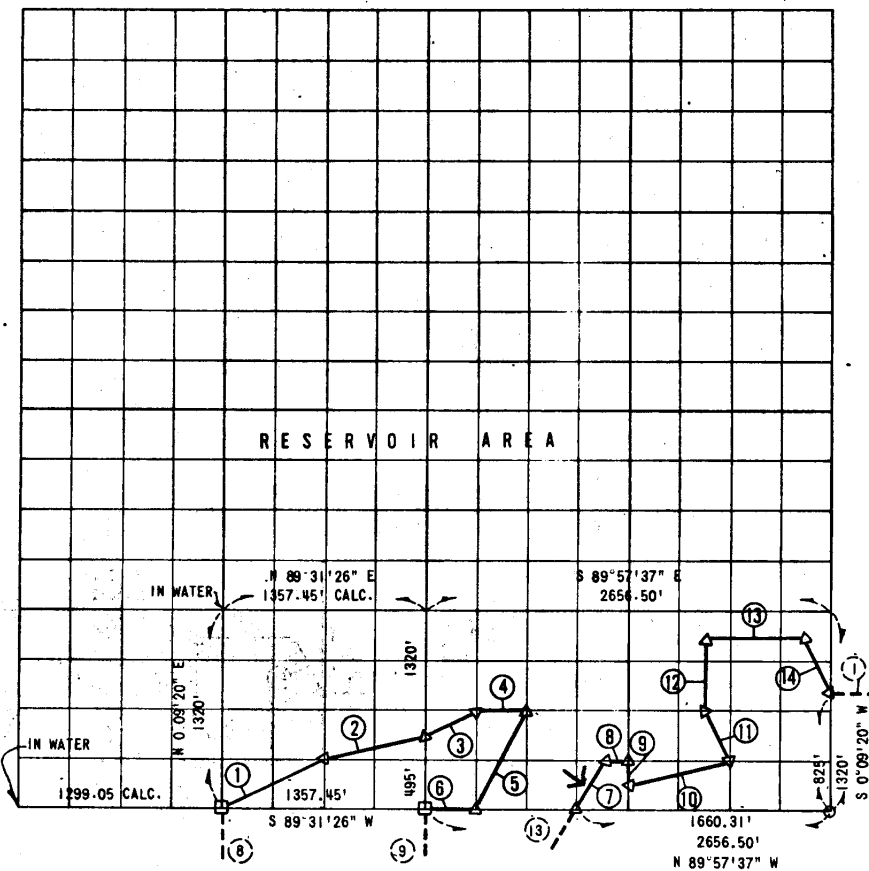


# EUFULA RESERVOIR CANADIAN RIVER, OKLAHOMA

PARTIAL BOUNDARY SURVEYS OF SECTION 26, T 12 N., R 15 E., McINTOSH COUNTY



COURSE	DISTANCE	BEARING	COURSE	DISTANCE	BEARING
1	757.96	N 63° 42' 59\" E			
2	700.26	N 75° 53' 46\" E			
3	371.10	N 63° 38' 25\" E			
4	332.06	S 89° 57' 37\" E			
5	739.43	S 26° 50' 25\" W			
6	332.06	N 89° 57' 37\" W			
7	369.71	N 26° 50' 25\" E			
8	166.03	S 89° 57' 37\" E			
9	165.00	S 0° 09' 20\" W			
10	684.64	N 76° 05' 38\" E			
11	369.11	N 26° 34' 34\" W			
12	495.00	N 0° 09' 20\" E			
13	664.13	S 89° 57' 37\" E			
14	369.11	S 26° 34' 34\" E			

*6,515.60*

BOOK NO. E 1108

- LEGEND**
- △ C E MONUMENT      ● HWY DEPT MON
  - ORIGINAL STONE    ○ IRON PIN

53

TRACT NO. DACW56-70-C-0090

PERFORMED UNDER SUPERVISION OF  
RMY ENGINEER DISTRICT, TULSA  
CORPS OF ENGINEERS

BY  
**ADE & ASSOCIATES**

**CERTIFICATE OF SURVEY**

THIS DRAWING CORRECTLY REPRESENTS A SECTION SURVEY  
COMPLETED UNDER MY SUPERVISION SEPTEMBER 1970

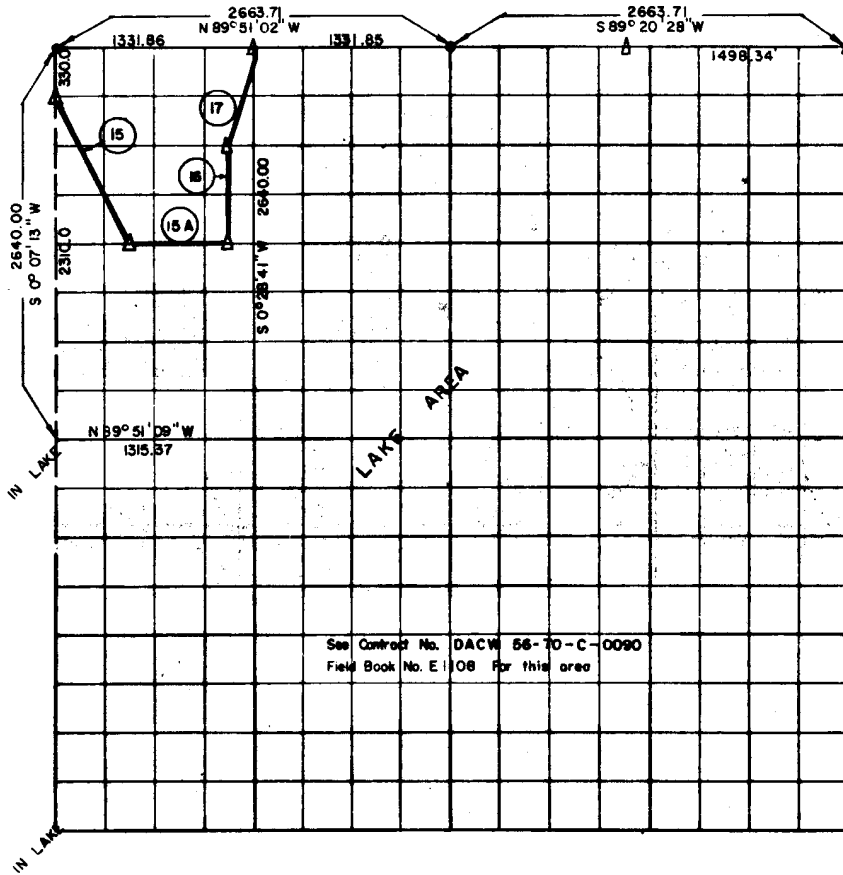
*James L Slade*  
JAMES L SLADE

**PARTIAL BOUNDARY SURVEYS  
EUFAULA LAKE  
OKLAHOMA**

**RECEIVED**  
OCT 16 1984

Performed Under Contract Number DACW 56-72-C-0121

SEC. 26, T. 12 N., R. 15 E., COUNTY McINTOSH



See Contract No. DACW 56-70-C-0090  
Field Book No. E 1108 For this area

Course No.	Distance	Bearing	Course No.	Distance	Bearing
15	1107.68	S 26° 30' 07" E			
15 A	661.81	S 89° 51' 05" E			
16	660.00	N 0° 26' 00" E			
17	681.47	N 1° 34' 22" E			

CERTIFICATE OF SURVEY  
 I hereby certify that the above plat is a true and correct representation of the survey made in Section 26 T. 12 N. R. 15 E., COUNTY, OKLAHOMA  
*Frank P. P... 2*  
 Registered Professional Engineer  
 Registered Land Surveyor

Field Book No. E 1190 A Date 8-25-72

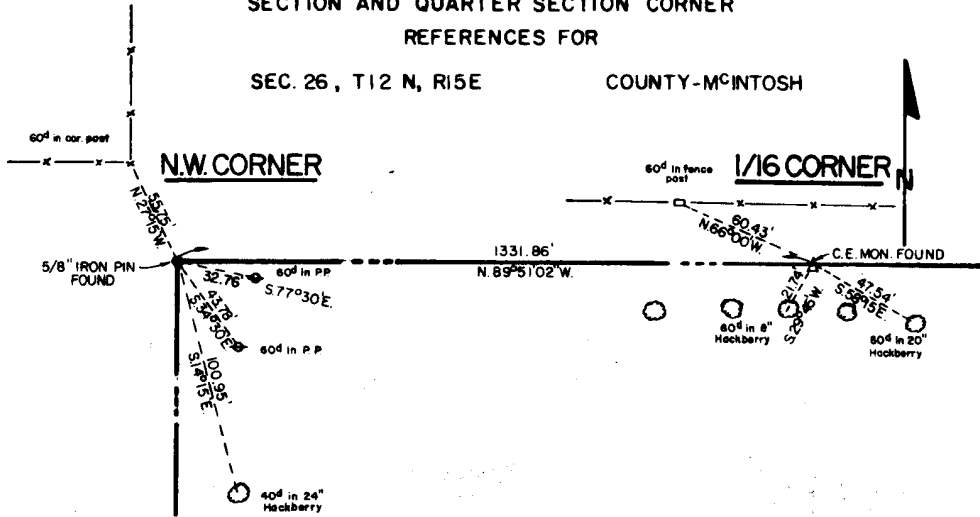
MAPCO ENGINEERING CORPORATION  
 Under The Supervision Of  
 U.S. ARMY ENGINEER DISTRICT, TULSA  
 CORPS OF ENGINEERS  
 SHEET 1 of 1

LEGEND  
 ▲ MONUMENT  
 ○ ORIGINAL CORNER  
 ○ IRON PIN

53

EUFAULA LAKE  
OKLAHOMA

SECTION AND QUARTER SECTION CORNER  
REFERENCES FOR  
SEC. 26, T12 N, R15E COUNTY-M<sup>C</sup>INTOSH



Scale: 1" = 50'  
Date: 8-25-72  
Field book No. E-1190 A

**MAPCO**  
ENGINEERING CORPORATION  
5400 S. Shields Blvd. Ph. 632-7761  
OKLAHOMA CITY, OKLA. 73129

*Frank J. Davis*  
REGISTERED PROFESSIONAL ENGINEER  
REGISTERED LAND SURVEYOR

**LEGEND**  
Δ - Monument  
□ - Original Corner  
○ - Iron pin