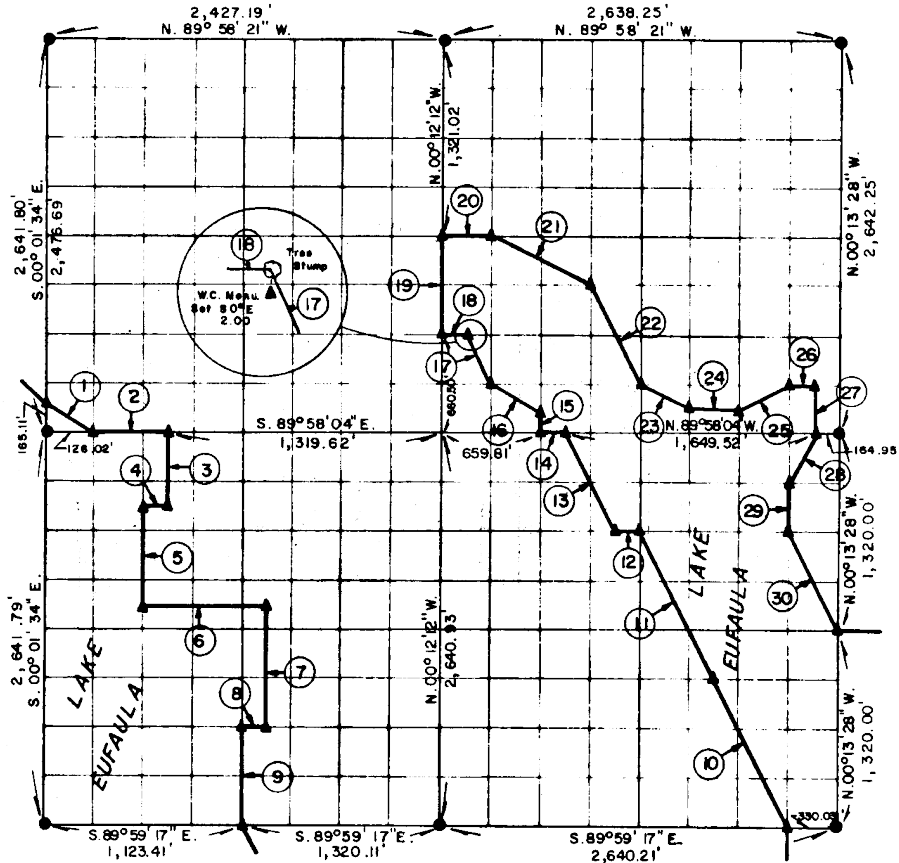


**PARTIAL BOUNDARY SURVEYS  
EUFULA LAKE  
OKLAHOMA**

Performed Under Contract Number DACW 56-76-C-0238

SEC. 18, T. 12 N., R. 16 E., COUNTY McINTOSH



Course No.	Distance	Bearing
1.	207.81'	S. 37° 21' 26\" E.
2.	494.86'	S. 89° 58' 04\" E.
3.	495.30'	S. 00° 11' 19\" E.
4.	164.96'	N. 89° 58' 18\" W.
5.	660.41'	S. 00° 11' 14\" E.
6.	824.89'	S. 89° 58' 36\" E.
7.	825.42'	S. 00° 11' 38\" E.
8.	165.00'	N. 89° 58' 59\" W.
9.	660.35'	S. 00° 11' 33\" E.
10.	1,108.77'	N. 28° 43' 53\" W.
11.	1,108.77'	N. 26° 43' 53\" W.
12.	164.97'	N. 89° 58' 22\" W.
13.	739.24'	N. 26° 43' 02\" W.

Course No.	Distance	Bearing
14.	164.95'	N. 89° 58' 04\" W.
15.	165.13'	N. 00° 12' 30\" W.
16.	369.53'	N. 63° 25' 32\" W.
17.	369.76'	N. 26° 41' 49\" W.
18.	164.94'	N. 89° 58' 08\" W.
19.	660.50'	N. 00° 12' 12\" W.
20.	329.84'	S. 89° 58' 12\" E.
21.	738.98'	S. 63° 25' 27\" E.
22.	739.57'	S. 26° 42' 05\" E.
23.	369.55'	S. 63° 25' 36\" E.
24.	329.90'	S. 89° 58' 05\" E.
25.	368.27'	N. 63° 23' 23\" E.
26.	164.94'	S. 89° 58' 06\" E.
27.	330.28'	S. 00° 13' 23\" E.
28.	368.29'	S. 26° 23' 10\" W.
29.	330.01'	S. 00° 13' 18\" E.
30.	739.17'	S. 26° 44' 05\" E.

CERTIFICATE OF SURVEY  
 Hereby Certify That The  
 Above Plat is a True and  
 Correct Representation of  
 The Survey Made in Section  
18, T. 12 N., R. 16 E., McINTOSH  
 COUNTY, OKLAHOMA

*Frank P. Deane*  
 Registered Professional Engineer  
 Registered Land Surveyor

Field Book No. E1262  
 Date MARCH, 1977

MAPCO ENGINEERING CORPORATION  
 Under The Supervision of  
 U.S. ARMY ENGINEER DISTRICT, TULSA  
 CORPS OF ENGINEERS

SHEET 1 of 2

LEGEND  
 Δ MONUMENT  
 □ ORIGINAL CORNER  
 ○ IRON PIN

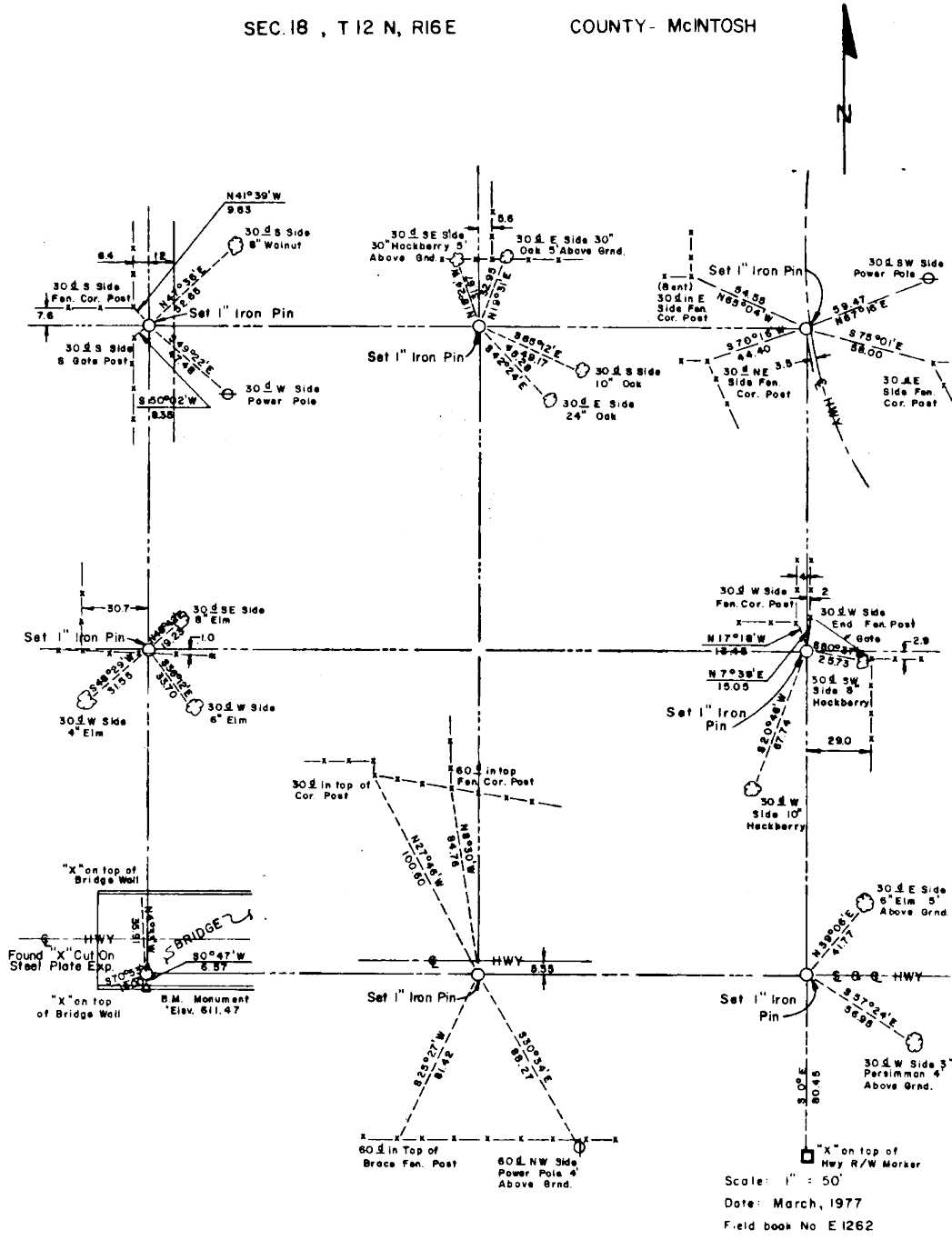
25

# EUFAULA LAKE OKLAHOMA

SECTION AND QUARTER SECTION CORNER  
REFERENCES FOR

SEC. 18 , T 12 N, R 16 E

COUNTY- McINTOSH



- LEGEND**
- △ - Monument
  - - Original Corner
  - - Iron pin