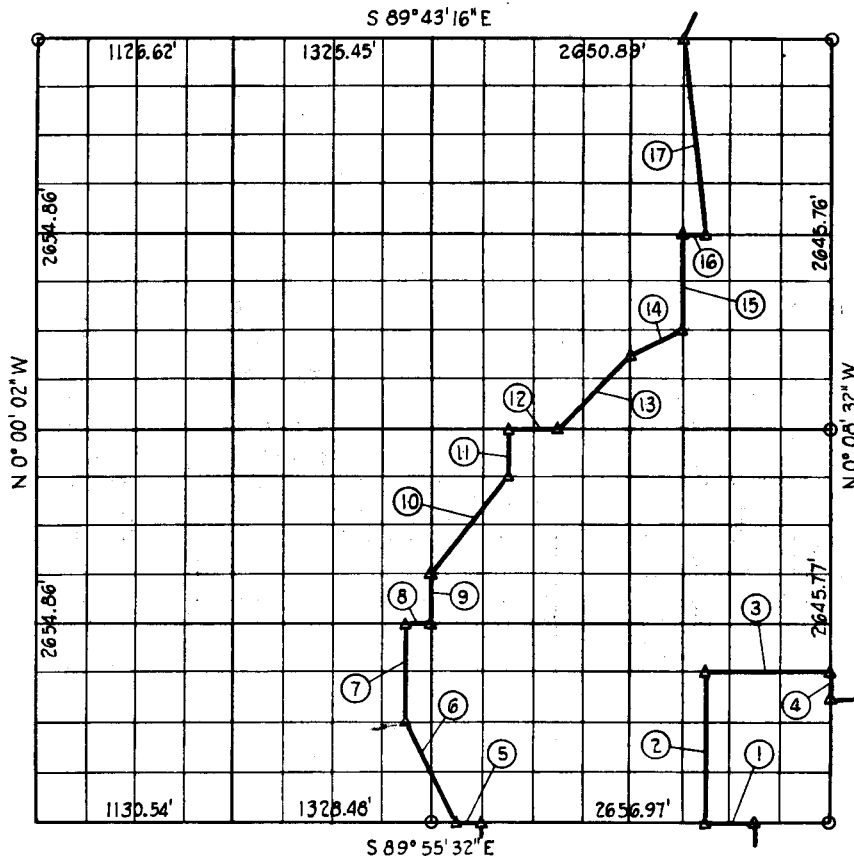


SEC. 30 T. 12 N R. 16 E COUNTY MCINTOSH



Course Number	Distance	Bearing	Course Number	Distance	Bearing
1	332.12	S89°55'32\" E	10	327.05	S89°55'13\" E
2	992.72	N 0°07'18\" W	11	331.14	N 0°05'19\" W
3	330.43	S89°53'14\" E	12	339.89	S89°49'24\" E
4	165.36	S 0°03'32\" E	13	336.26	S45°05'47\" E
5	169.06	S89°55'32\" W	14	309.08	S63°37'09\" E
6	782.03	N26°39'44\" W	15	691.38	N 0°07'03\" E
7	663.70	N 0°04'26\" W	16	165.78	S89°46'26\" E
8	167.97	S89°52'28\" E	17	1335.16	N 7°15'00\" W
9	351.31	N 0°04'34\" W			

Book No. E-950

Date: Jan, 1965

55

I, Charles J. Pinklea, a Registered Professional Engineer, do hereby certify that the above is a true and accurate survey of Sec. 30, T 12 N, R 16 E as made under my supervision.

Charles J. Pinklea
 Charles J. Pinklea
 Reg. Prof. Eng'r. No. 1403