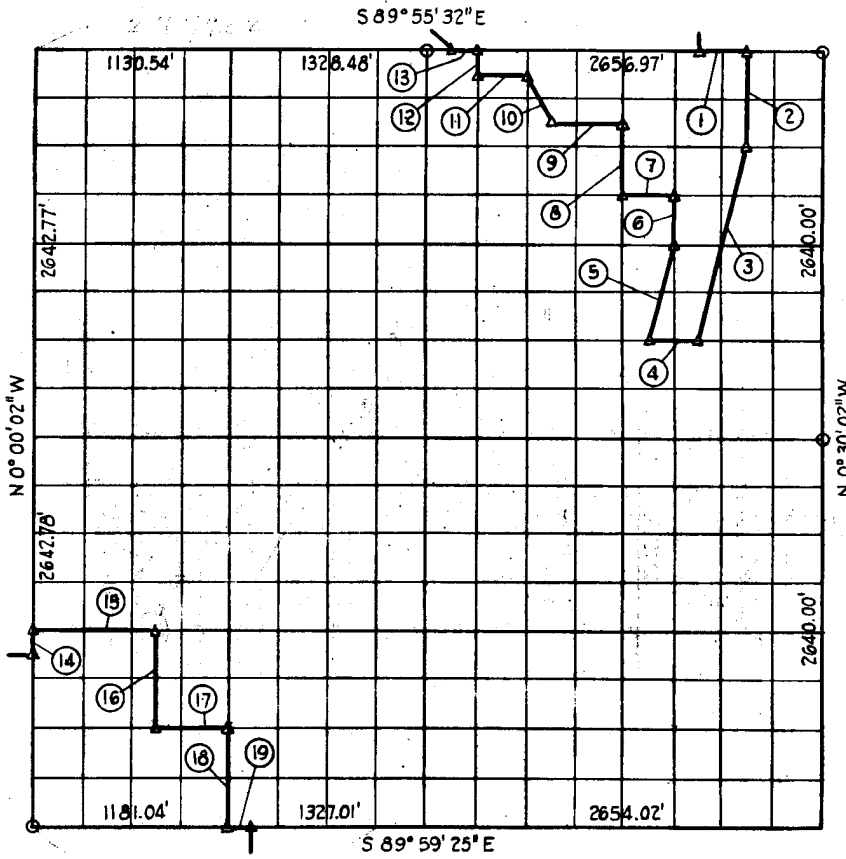


SEC. 31 T. 12 N. R. 16 E. COUNTY MEINTON



Course Number	Distance	Bearing	Course Number	Distance	Bearing
1	332.12	S89°55'32" E	11	332.11	N89°55'39" W
2	660.07	S 0°30'23" E	12	165.08	N 0°31'42" W
3	1358.12	S13°38'30" W	13	166.06	N89°55'32" W
4	331.98	S89°57'00" W	14	165.17	N 0°00'02" W
5	679.11	N13°38'06" E	15	730.27	S89°58'27" E
6	330.07	N 0°30'45" W	16	660.59	S 0°20'32" E
7	332.11	N89°56'16" W	17	440.31	S89°58'50" E
8	400.14	N 0°30'59" W	18	660.57	S 0°32'53" E
9	400.13	N89°55'54" W	19	165.88	S89°59'25" E
10	371.08	N27°06'16" W			

Book No. 8-951

Date: Jan. 1965

2873 71

I, Charles J. Finklea, a Registered Professional Engineer, do hereby certify that the above is a true and accurate survey of Sec. 31, T. 12 N., R. 16 E. as made under my supervision.

*Charles J. Finklea*  
 Charles J. Finklea  
 Reg. Prof. Eng'r. No. 100