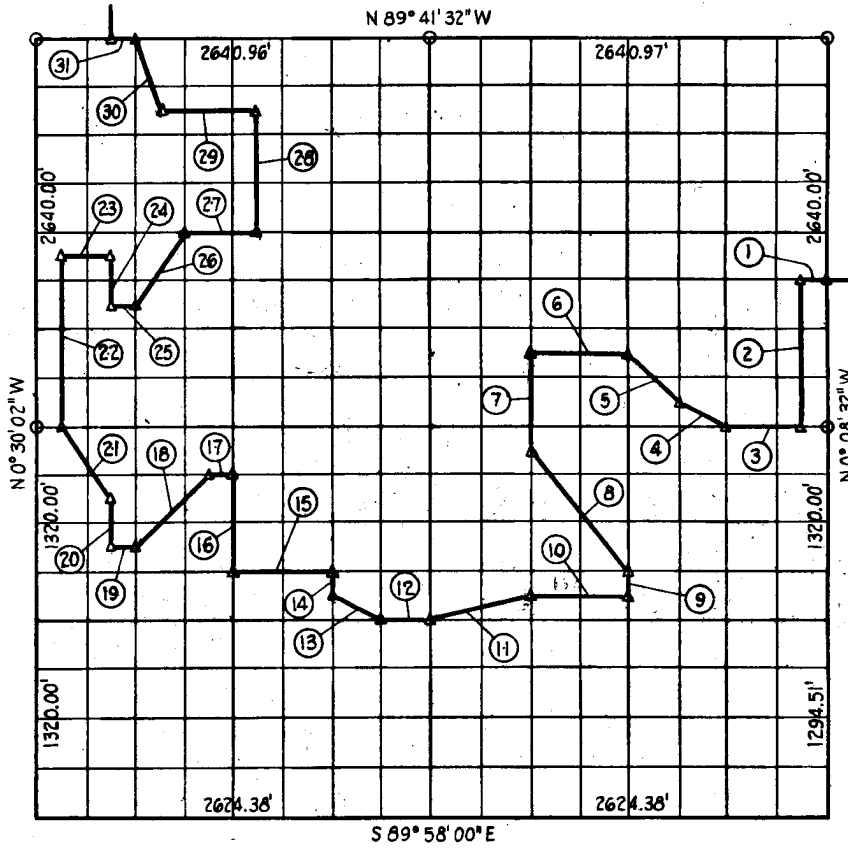


SEC. 32 T. 12 N R. 16 E COUNTY MEINTOWN



Course Number	Distance	Bearing	Course Number	Distance	Bearing
1	164.74	N 89° 41' 28" W	17	164.48	N 89° 41' 24" E
2	990.00	S 0° 09' 12" E	18	694.24	S 44° 50' 03" W
3	493.63	N 89° 41' 25" W	19	164.38	N 89° 41' 22" W
4	369.47	N 63° 10' 00" W	20	330.00	N 0° 28' 01" W
5	468.30	N 44° 53' 18" W	21	598.11	N 33° 50' 43" E
6	658.57	N 89° 41' 26" W	22	1155.00	N 0° 29' 22" W
7	660.00	S 0° 16' 36" E	23	329.54	S 89° 41' 26" E
8	1060.15	S 38° 35' 51" E	24	330.00	S 0° 28' 01" E
9	165.00	S 0° 13' 54" E	25	164.71	S 89° 41' 27" E
10	657.28	N 89° 41' 21" W	26	591.02	S 33° 36' 15" E
11	675.96	S 76° 10' 55" W	27	494.41	S 89° 41' 29" E
12	329.42	N 89° 41' 21" W	28	825.00	N 0° 23' 59" E
13	369.41	N 63° 09' 42" W	29	659.85	N 89° 41' 31" W
14	165.00	N 0° 21' 58" W	30	523.85	S 16° 48' 35" W
15	657.40	N 89° 41' 22" W	31	165.06	N 89° 41' 32" W
16	660.00	N 0° 24' 39" W			

Book No. 1-972

Date: Jan. 1965

15740

72

I, Charles J. Finklea, a Registered Professional Engineer, do hereby certify that the above plat is a true and accurate survey of Sec. 32, T 12 N, R 16 E as made under my supervision.

*Charles J. Finklea*  
 Charles J. Finklea  
 Reg. Prof. Eng'r. No. 1065