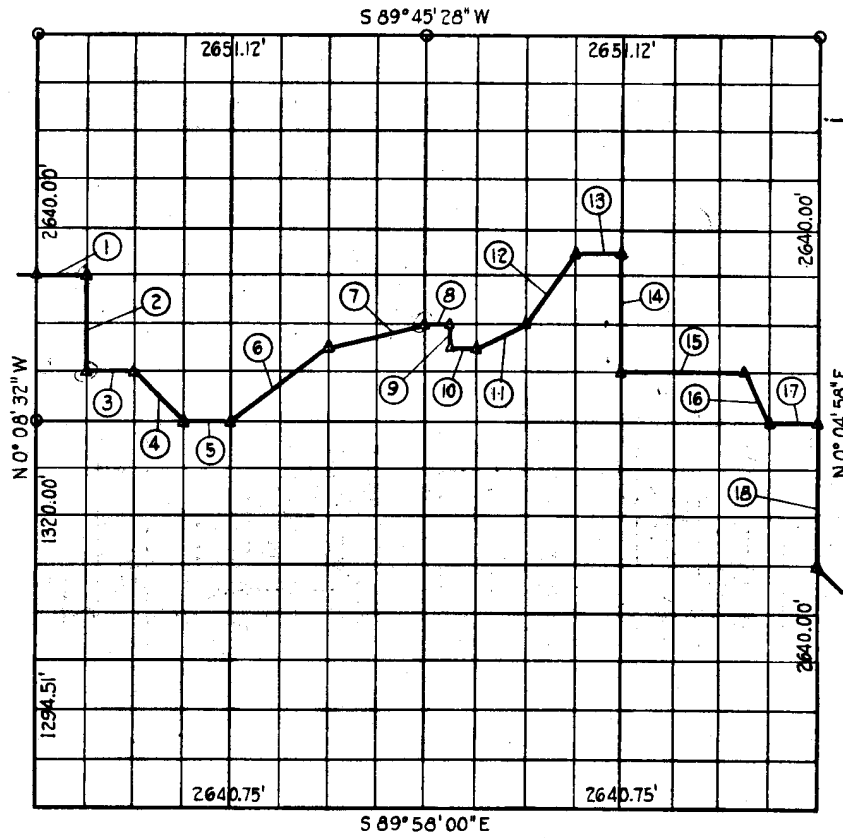


Sec. 33 T. 12 N R. 16 E COUNTY MEIN.



Course Number	Distance	Bearing	Course Number	Distance	Bearing
1	339.29	N 89° 45' 27" E	10	305.43	S 89° 45' 27" E
2	660.00	S 0° 07' 41" E	11	370.35	N 63° 18' 03" E
3	320.82	N 89° 45' 27" E	12	596.64	N 33° 01' 46" E
4	400.6	S 45° 14' 35" E	13	331.03	N 89° 45' 27" E
5	320.74	N 89° 45' 27" E	14	625.00	S 0° 01' 36" W
6	124.75	N 82° 30' 57" E	15	627.06	N 39° 45' 17" E
7	504.19	N 75° 46' 09" E	16	368.33	S 30° 36' 52" E
8	165.45	N 89° 45' 27" E	17	330.74	N 89° 45' 27" E
9	115.00	S 0° 01' 27" E	18	990.00	S 0° 04' 56" E

Book No. 10-153

Date: Jan. 1965

8,762.94

73

I, Charles J. Finklea, a Registered Professional Engineer, do hereby certify that the above is a true and accurate survey of Sec. 33, T. 12 N., R. 16 E. as made under my supervision.

Charles J. Finklea
 Charles J. Finklea
 Reg. Prof. Eng'r. No. 1000

8760