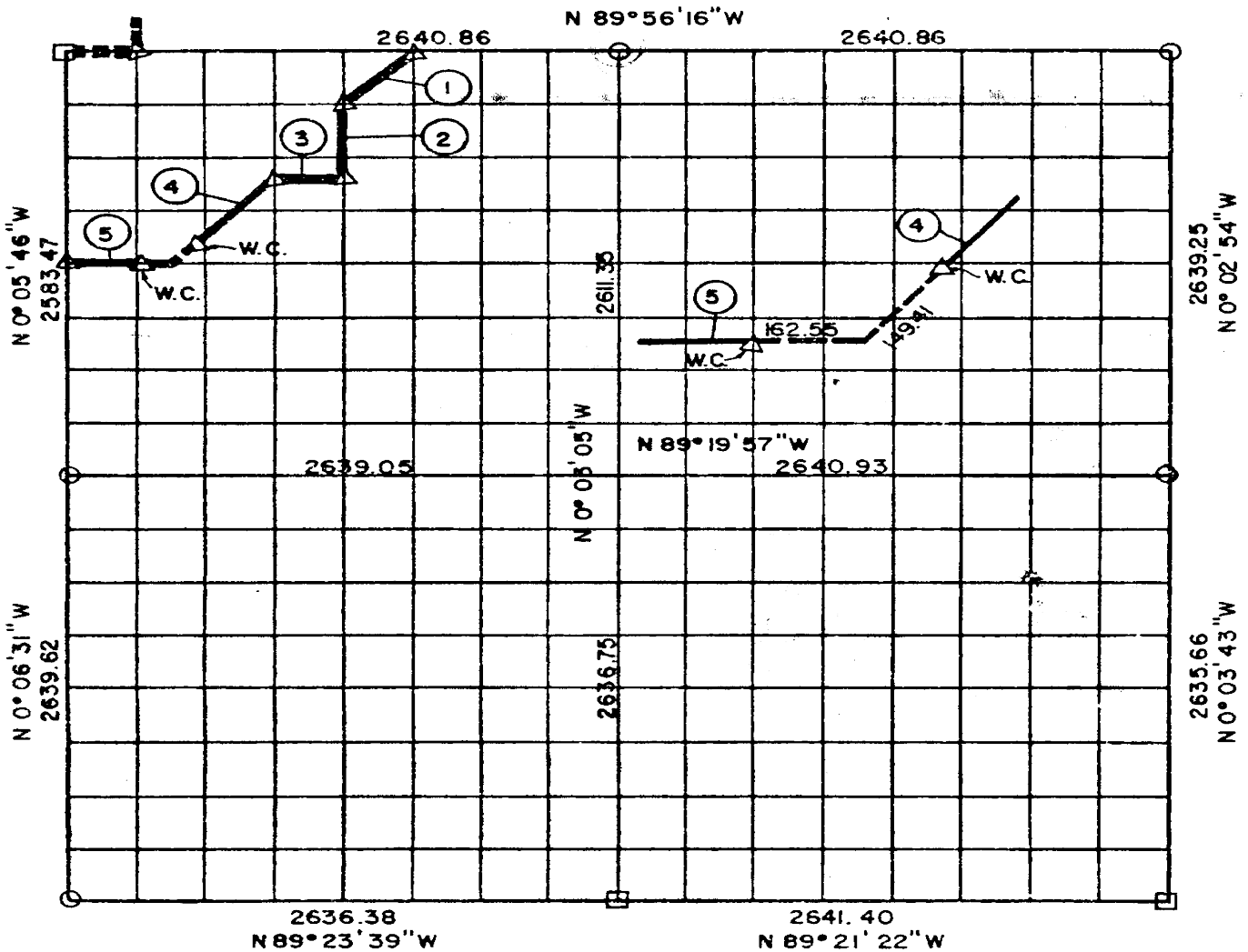


PARTIAL BOUNDARY SURVEYS  
AREA "B"

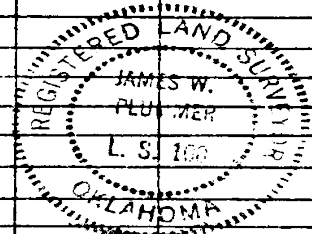
EUFAULA LAKE, OKLAHOMA

Performed Under Contract Number DACW 56-77-C-0103

SEC. 1, T 5 N, R 15 E PITTSBURG COUNTY, OK.



Course No.	Distance	Bearing	Course No.	Distance	Bearing	Course No.	Distance	Bearing
1	434.66	S 49° 20' 38" W						
2	495.82	S 0° 04' 25" E						
3	330.06	N 89° 20' 13" W						
4	696.06	S 45° 14' 44" W						
5	495.02	N 89° 20' 09" W						
	2451.62							



Field Book No. E-1287

Date: 1977

PLUMMER-BRUMMETT, INC. 586  
CONSULTING ENGINEERS & SURVEYORS  
1736 E. 59th Pl., Tulsa, Okla., 74105, Tel. (918) 939-2251

CERTIFICATE OF SURVEY  
I HEREBY CERTIFY THAT THE  
ABOVE PLAT IS A TRUE AND  
CORRECT REPRESENTATION OF  
THE SURVEY MADE IN SECTION  
1, T 5 N, R 15 E, PITTSBURG  
COUNTY, OKLAHOMA.

LEGEND

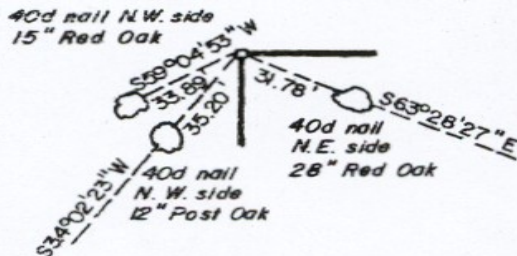
- ▲ MONUMENT
- ORIGINAL CORNER
- IRON PIN

Under the Supervision of  
U.S. ARMY ENGINEER DISTRICT, TULSA  
CORPS OF ENGINEERS

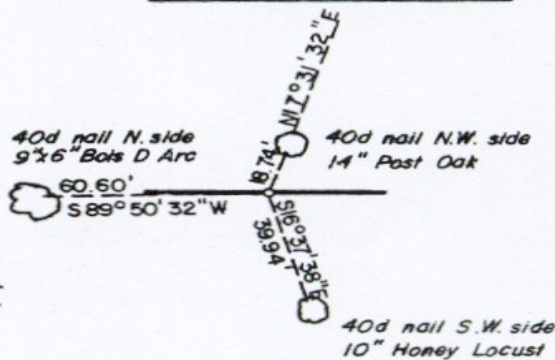
*James W. Plummer*  
REGISTERED LAND SURVEYOR

EUFAULA LAKE  
AREA "B"  
SECTION AND QUARTER SECTION CORNER  
REFERENCES FOR  
SEC. 1 , T 5 N, R 15 E, PITTSBURG COUNTY, OK.

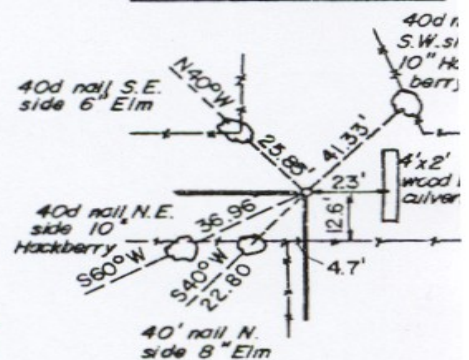
N.W. CORNER



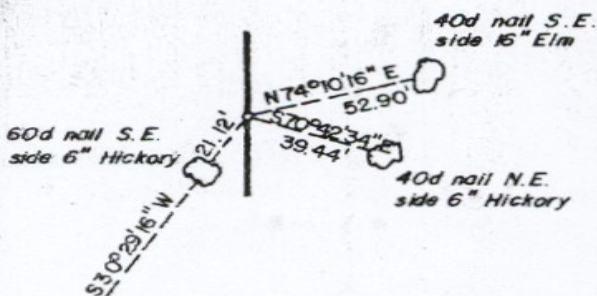
NORTH 1/4 COR.



N.E. CORNER

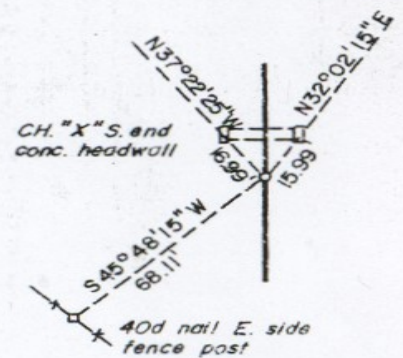


WEST 1/4 COR.

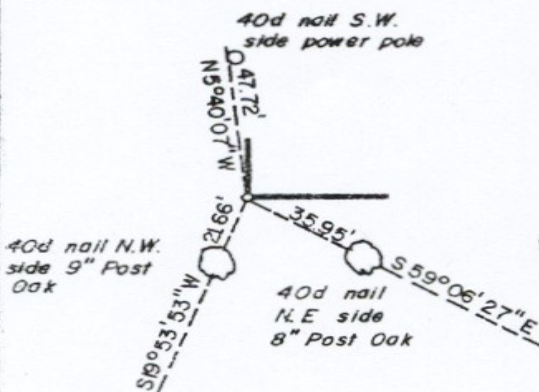


SCALE: 1" = 50'

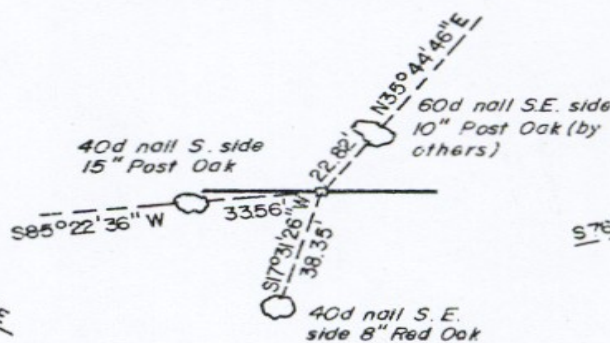
EAST 1/4 COR.



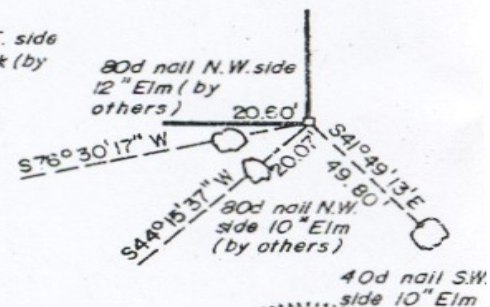
S.W. CORNER



SOUTH 1/4 COR.



S.E. CORNER



LEGEND

- A MONUMENT
- C ORIGINAL CORNER
- O 1" IRON PIN

PLUMMER-BRUMMETT, INC.  
CONSULTING ENGINEERS & SURVEYORS  
1736 E. 59th Pl., Tulsa, Okla., 74105, Tel. (918) 939-2251

Under the Supervision of  
U.S. ARMY ENGINEER DISTRICT, TULSA  
CORPS OF ENGINEERS

FIELD BOOK NO. E-1387  
DATE 1977 JAMES W. PLUMMER  
REGISTERED LAND SURVEYOR  
U.S. 100  
REGISTERED LAND SURVEY