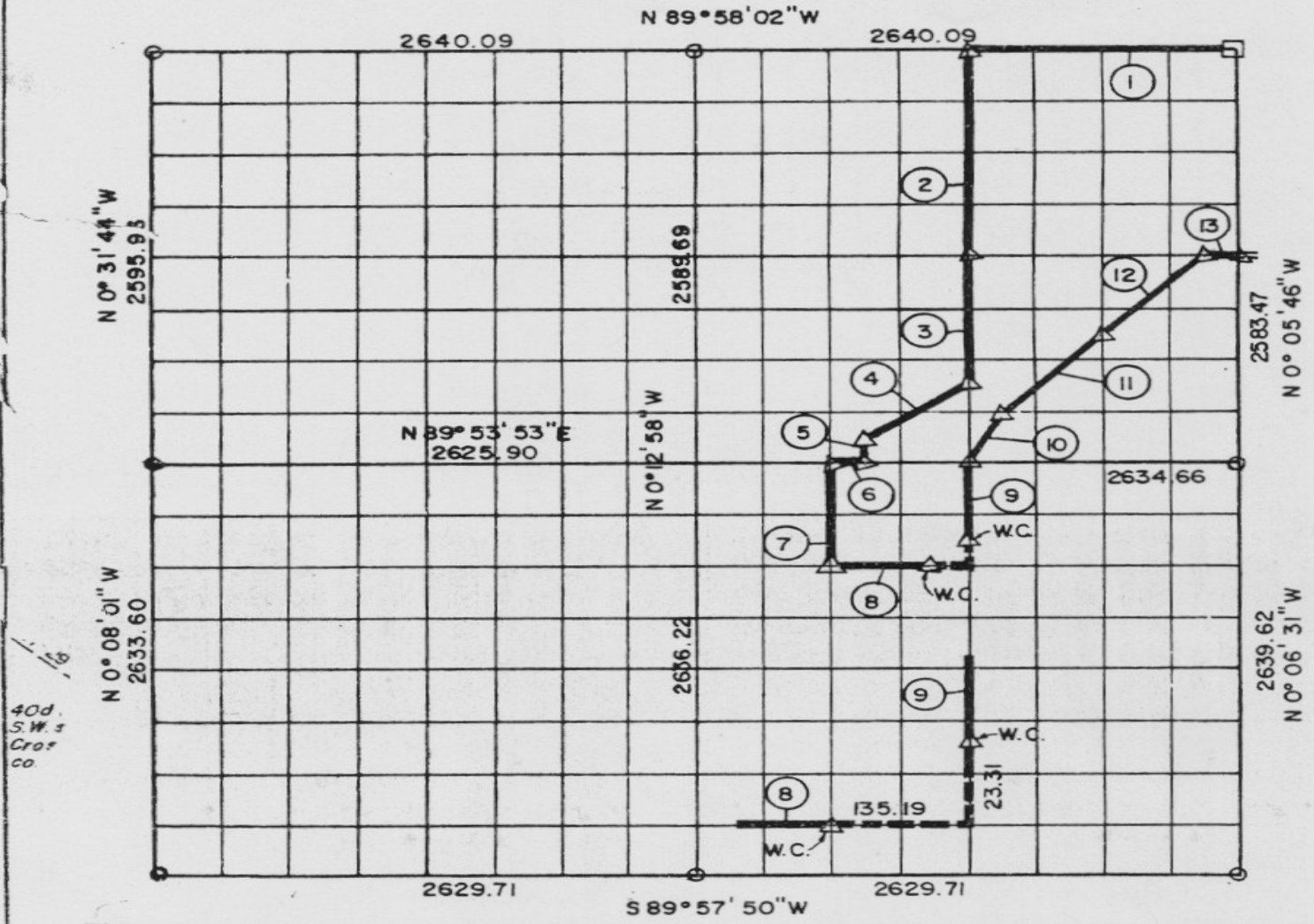


PARTIAL BOUNDARY SURVEYS
AREA "B"

EUFALA LAKE, OKLAHOMA

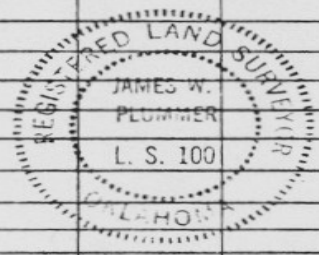
Performed Under Contract Number DACW 56-77-C-0103

SEC. 2, T 5 N, R 15 E PITTSBURG COUNTY, OK.



40d.
S.W. &
Cros
co.

Course No.	Distance	Bearing	Course No.	Distance	Bearing	Course No.	Distance	Bearing
1	1320.05	N 89° 58' 02" W						
2	1266.88	N 0° 09' 22" W						
3	824.81	N 0° 09' 22" W						
4	593.89	N 56° 08' 18" E						
5	164.85	N 0° 10' 43" W						
6	164.67	N 89° 53' 53" E						
7	659.34	N 0° 11' 25" W						
8	658.35	S 89° 54' 52" W						
9	659.53	S 0° 09' 45" E						
10	368.68	S 26° 22' 47" W						
11	699.68	S 44° 48' 09" W						
12	700.43	S 44° 47' 07" W						
13	164.84	S 89° 47' 31" W						
8246								



Field Book No. E-1286

Date: 1977

PLUMMER-BRUMMETT, INC.
CONSULTING ENGINEERS & SURVEYORS
1736 E. 59th Pl., Tulsa, Okla., 74105, Tel. (918) 959-2251

585

CERTIFICATE OF SURVEY
I HEREBY CERTIFY THAT THE
ABOVE PLAT IS A TRUE AND
CORRECT REPRESENTATION OF
THE SURVEY MADE IN SECTION
2, T 5 N, R 15 E, PITTSBURG
COUNTY, OKLAHOMA.

LEGEND
A MONUMENT
O ORIGINAL CORNER
O 1" IRON PIN

Under the Supervision of
U.S. ARMY ENGINEER DISTRICT, TULSA
CORPS OF ENGINEERS

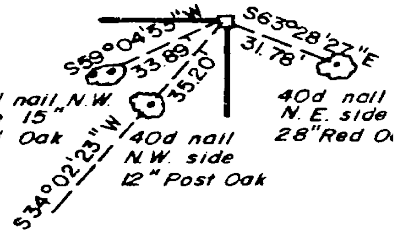
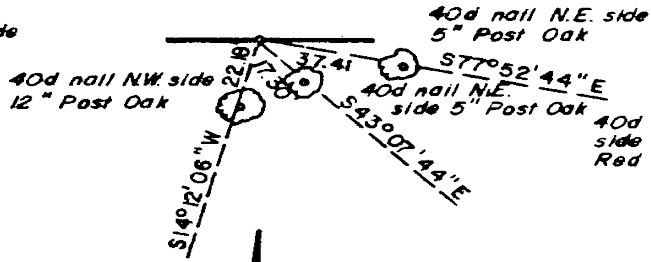
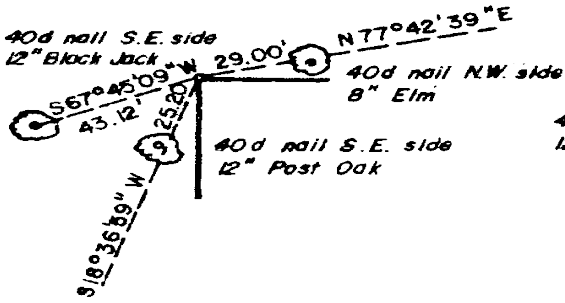
James W. Plummer
REGISTERED LAND SURVEYOR

EURASIA LAKE
 AREA "B"
 SECTION AND QUARTER SECTION CORNER
 REFERENCES FOR
 SEC. 2 , T 5 N, R 15 E, PITTSBURG COUNTY, OK.

N.W. CORNER

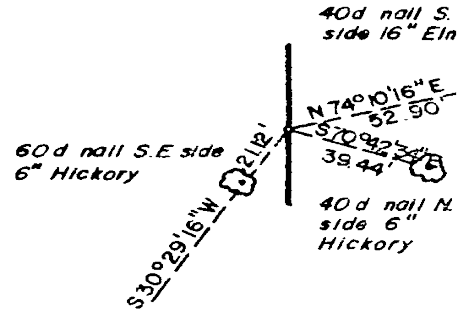
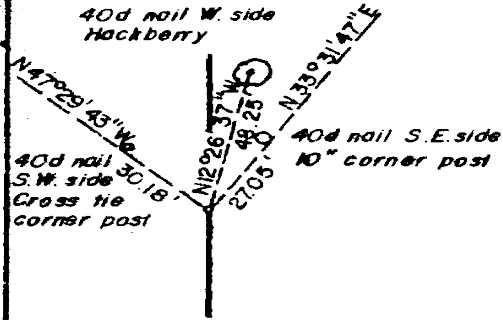
NORTH 1/4 COR.

N.E. CORNER



WEST 1/4 COR.

EAST 1/4 COR.

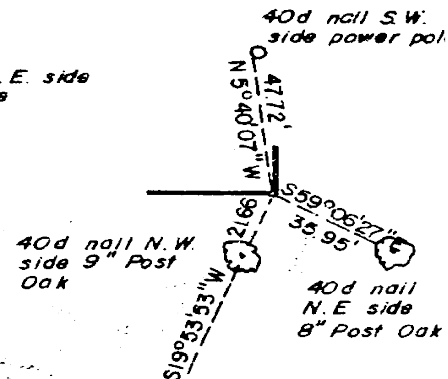
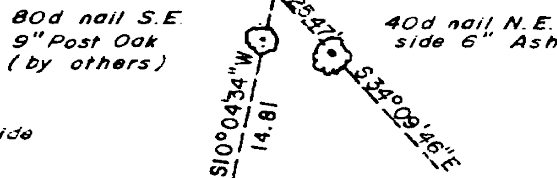
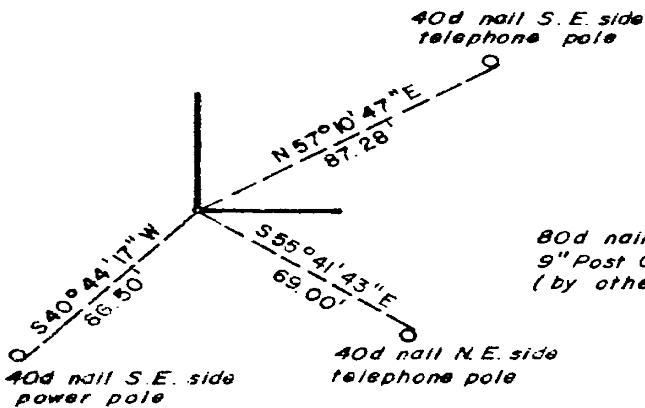


SCALE: 1" = 50'

S.W. CORNER

SOUTH 1/4 COR.

S.E. CORNER



LEGEND

- A MONUMENT
- D ORIGINAL CORNER
- O 1" IRON PIN

PLUMMER-BRUMMETT, INC.
 CONSULTING ENGINEERS & SURVEYORS
 1736 E. 59th Pl., Tulsa, Okla., 74105, Tel. (918) 939-2251

Under the Supervision of
U.S. ARMY ENGINEER DISTRICT, TULSA
CORPS OF ENGINEERS

FIELD BOOK NO. 1286

DATE 1957

REGISTERED LAND SURVEYOR
 JAMES W. PLUMMER

REGISTERED LAND SURVEYOR