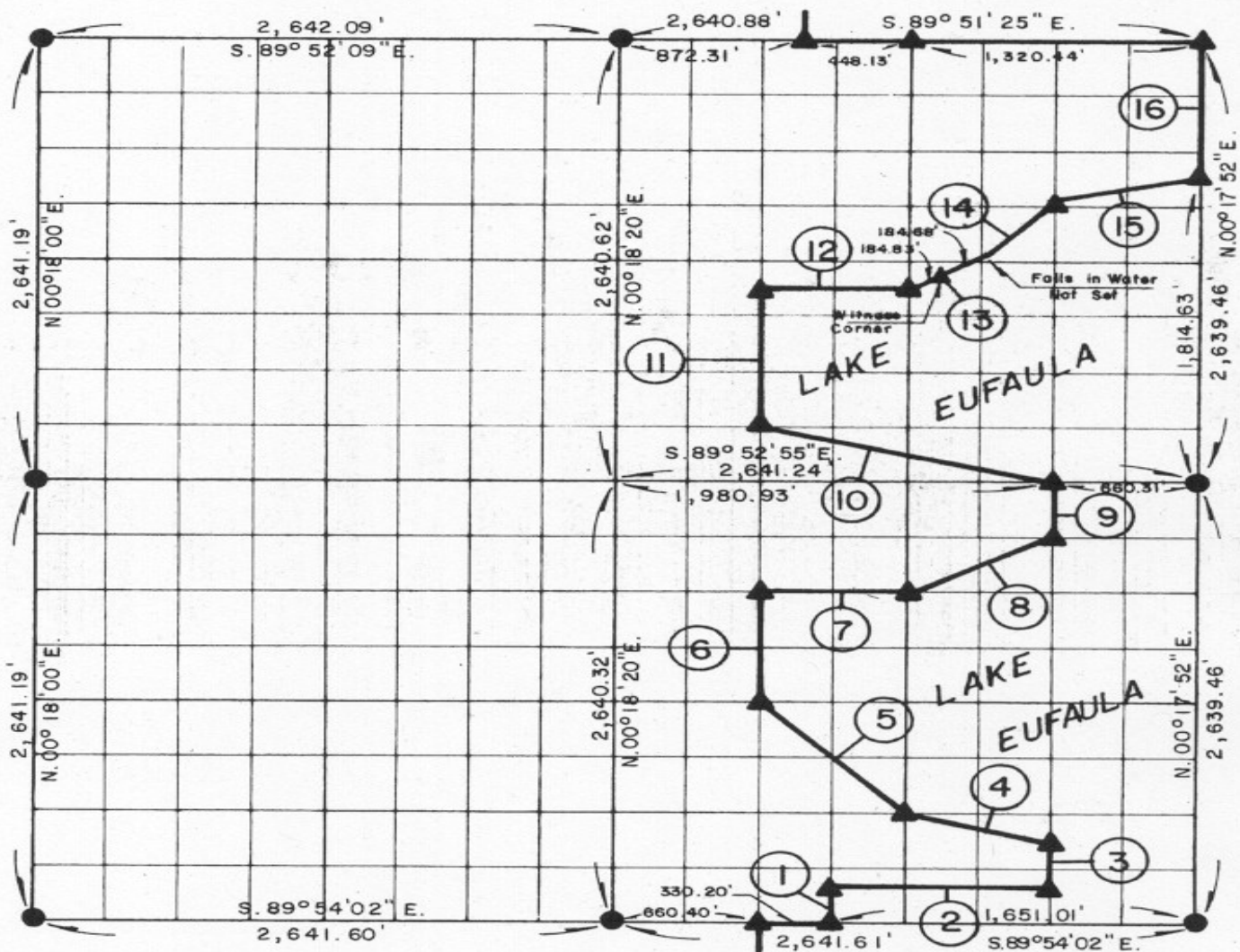


**PARTIAL BOUNDARY SURVEYS  
EUFAULA LAKE  
OKLAHOMA**

Performed Under Contract Number DACW 56-77-C-0096

SEC. 11, T. 5N., R. 16E., COUNTY PITTSBURG



Course No.	Distance	Bearing	Course No.	Distance	Bearing
1.	165.00'	N.00°18'10\" E.	14.	467.45'	N.45°13'46\" E.
2.	990.60'	S.89°53'58\" E.	15.	681.01'	N.76°06'55\" E.
3.	329.96'	N.00°17'59\" E.	16.	824.83'	N.00°17'52\" E.
4.	680.13'	N.75°51'27\" W.			
5.	932.04'	N.44°48'41\" W.			
6.	660.03'	N.00°18'13\" E.			
7.	660.33'	S.89°53'12\" E.			
8.	739.14'	N.63°36'00\" E.			
9.	329.96'	N.00°17'59\" E.			
10.	1,360.20'	N.75°50'22\" W.			
11.	825.10'	N.00°18'13\" E.			
12.	660.27'	S.89°52'16\" E.			
13.	369.51'	N.63°36'30\" E.			

Field Book No. E1328 Date JUNE, 1977

CERTIFICATE OF SURVEY  
I Herby Certify That The Above Plat is a True and Correct Representation of The Survey Made in Section 11 T. 5N., R. 16E., COUNTY, OKLAHOMA  
*Frank P. Pierce*  
Registered Professional Engineer  
Registered Land Surveyor

**MAPCO ENGINEERING CORPORATION**  
Under The Supervision Of  
**FRANK U.S. ARMY ENGINEER DISTRICT, TULSA**  
**PIERCE CORPS OF ENGINEERS**  
L.S. 207  
**OKLAHOMA**

SHEET 1 of 2

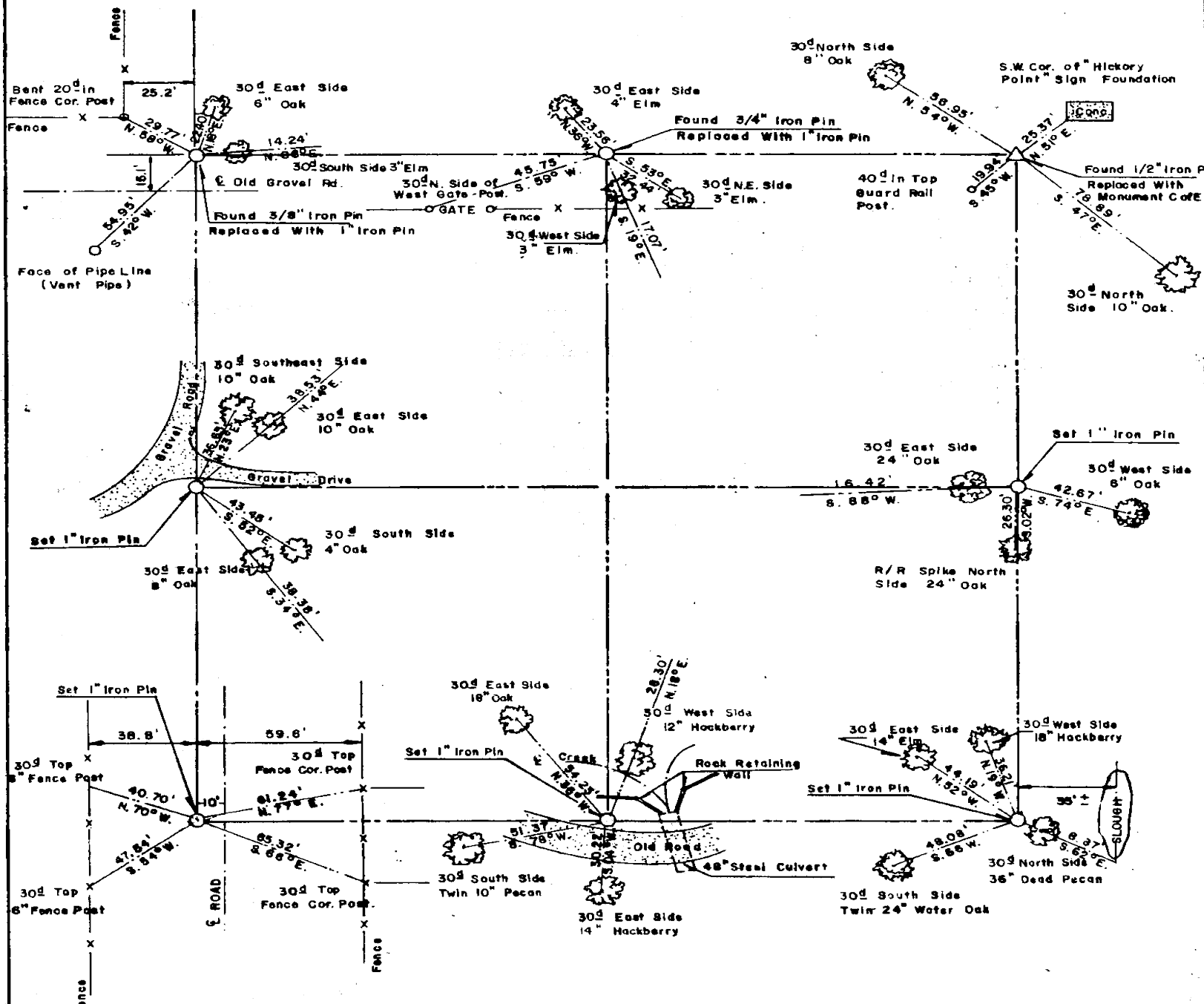
LEGEND  
▲ MONUMENT  
□ ORIGINAL CORNER  
○ IRON PIN

594

# EUFAULA LAKE OKLAHOMA

## SECTION AND QUARTER SECTION CORNER REFERENCES FOR

SEC. II , T 5 N, R16E PITTSBURG COUNTY



Scale: 1" = 50'  
 Date: JUNE, 1977  
 Field book No. E 1328

- LEGEND**
- △ - Monument
  - - Original Corner
  - - Iron pin