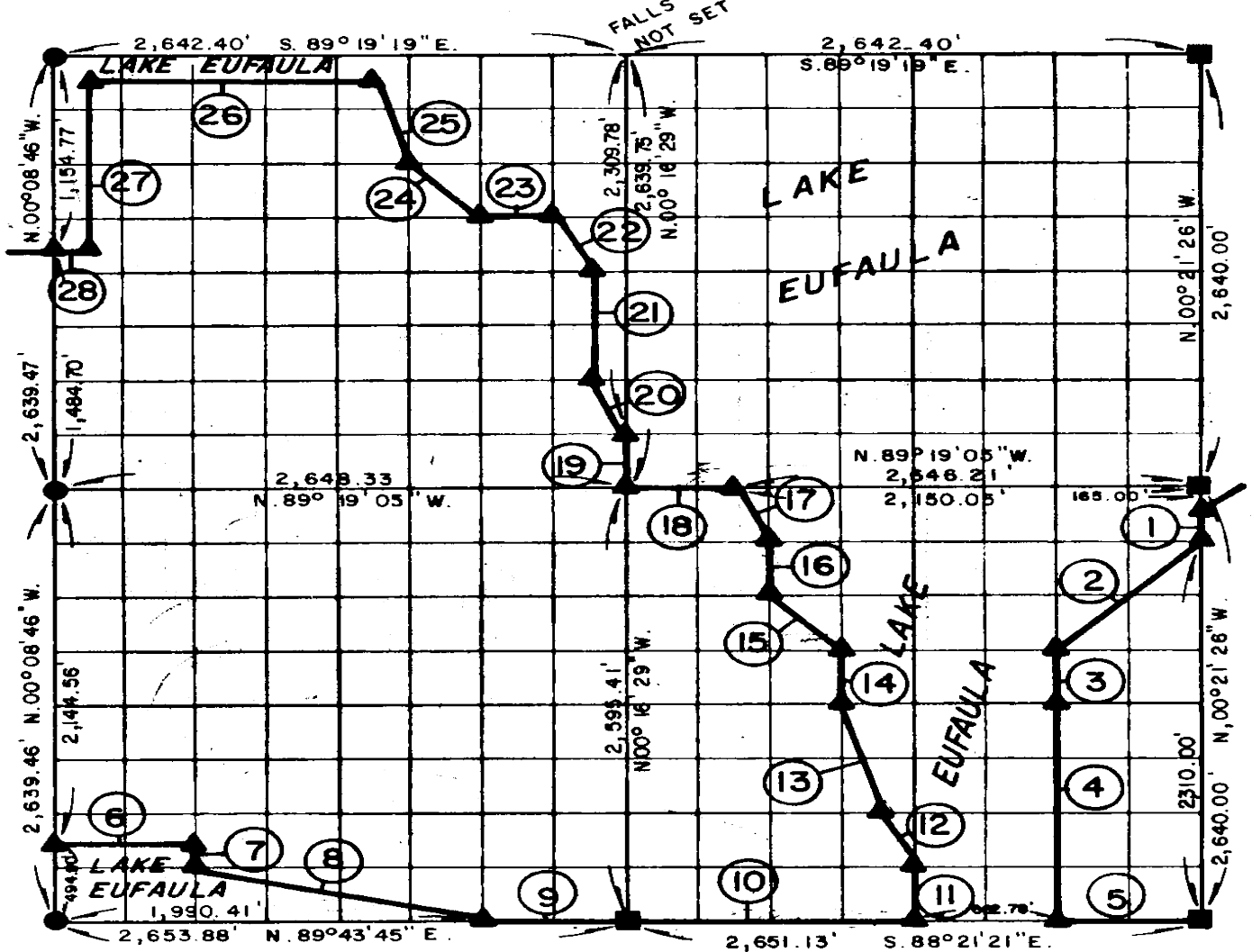


PARTIAL BOUNDARY SURVEYS EUFAULA LAKE OKLAHOMA

Performed Under Contract Number DACW 56-77-C-0096

SEC. 13, T. 5 N., R. 16 E., COUNTY PITTSBURG



Course No.	Distance	Bearing	Course No.	Distance	Bearing
1.	165.00'	S. 00° 21' 26" E.	15.	469.85'	N. 45° 04' 06" W.
2.	923.29'	S. 45° 25' 53" W.	16.	325.82'	N. 00° 17' 43" W.
3.	328.61'	S. 00° 20' 12" E.	17.	367.90'	N. 27° 00' 21" W.
4.	1,314.43'	S. 00° 20' 12" E.	18.	496.16'	N. 89° 19' 05" W.
5.	662.78'	S. 88° 21' 21" E.	19.	329.97'	N. 00° 16' 29" W.
6.	663.21'	N. 89° 54' 28" E.	20.	371.57'	N. 26° 42' 27" W.
7.	164.28'	S. 00° 10' 42" E.	21.	659.93'	N. 00° 16' 00" W.
8.	1,366.50'	S. 76° 21' 31" E.	22.	371.48'	N. 26° 40' 57" W.
9.	663.47'	N. 89° 43' 45" E.	23.	330.58'	N. 89° 19' 14" W.
10.	1,325.57'	S. 88° 21' 21" E.	24.	470.75'	N. 44° 49' 36" W.
11.	327.21'	N. 00° 18' 58" W.	25.	524.24'	N. 18° 35' 21" W.
12.	371.15'	N. 26° 48' 20" W.	26.	1,321.39'	N. 89° 19' 18" W.
13.	678.48'	N. 14° 25' 41" W.	27.	989.81'	S. 00° 09' 15" E.
14.	326.52'	N. 00° 18' 20" W.	28.	165.31'	N. 89° 19' 13" W.

CERTIFICATE OF SURVEY
I hereby Certify That The
Above Plat is a True and
Correct Representation of
The Survey Made in Section
13 T. 5 N., R. 16 E., PITTSBURG
COUNTY, OKLAHOMA

Frank P. Pierce
Registered Professional Engineer
Registered Land Surveyor

Field Book No. **E 1330** Date **JUNE, 1977**

MARCO ENGINEERING CORPORATION

Under The Supervision Of

FRANK PIERCE
U.S. ARMY ENGINEER DISTRICT, TULSA
CORPS OF ENGINEERS
L.S. 207

**REGISTERED PROFESSIONAL ENGINEER
REGISTERED LAND SURVEYOR
OKLAHOMA**

SHEET 1 of 2

16475.26

LEGEND

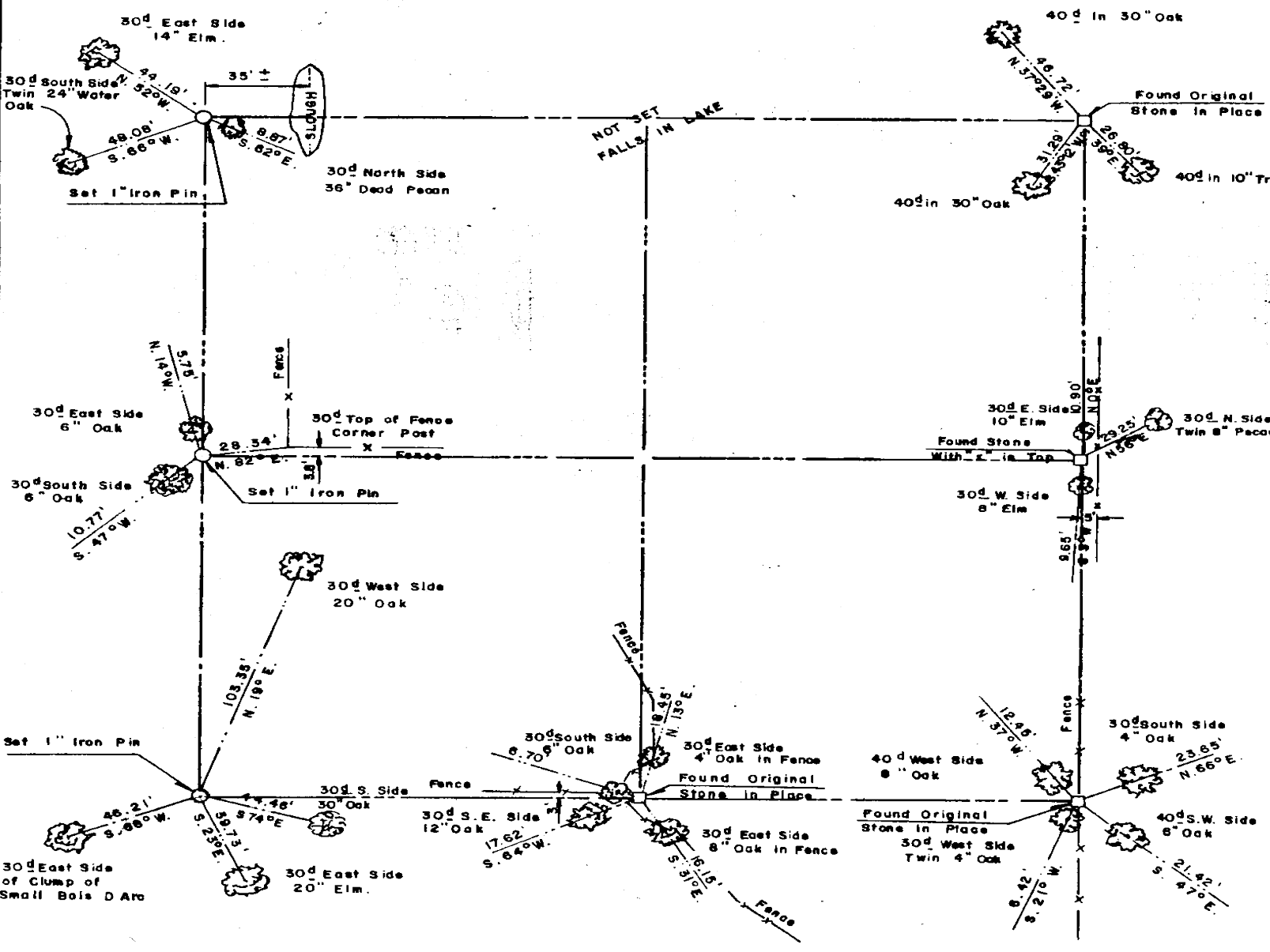
- ▲ MONUMENT
- ORIGINAL CORNER
- IRON PIN

603

EUFAULA LAKE OKLAHOMA

SECTION AND QUARTER SECTION CORNER
REFERENCES FOR

SEC. 13 , T 5 N, R16E PITTSBURG COUNTY



Scale: 1" = 50'
Date: JUNE, 1977
Field book No. E 1330

- LEGEND**
- △ - Monument
 - - Original Corner
 - - Iron pin