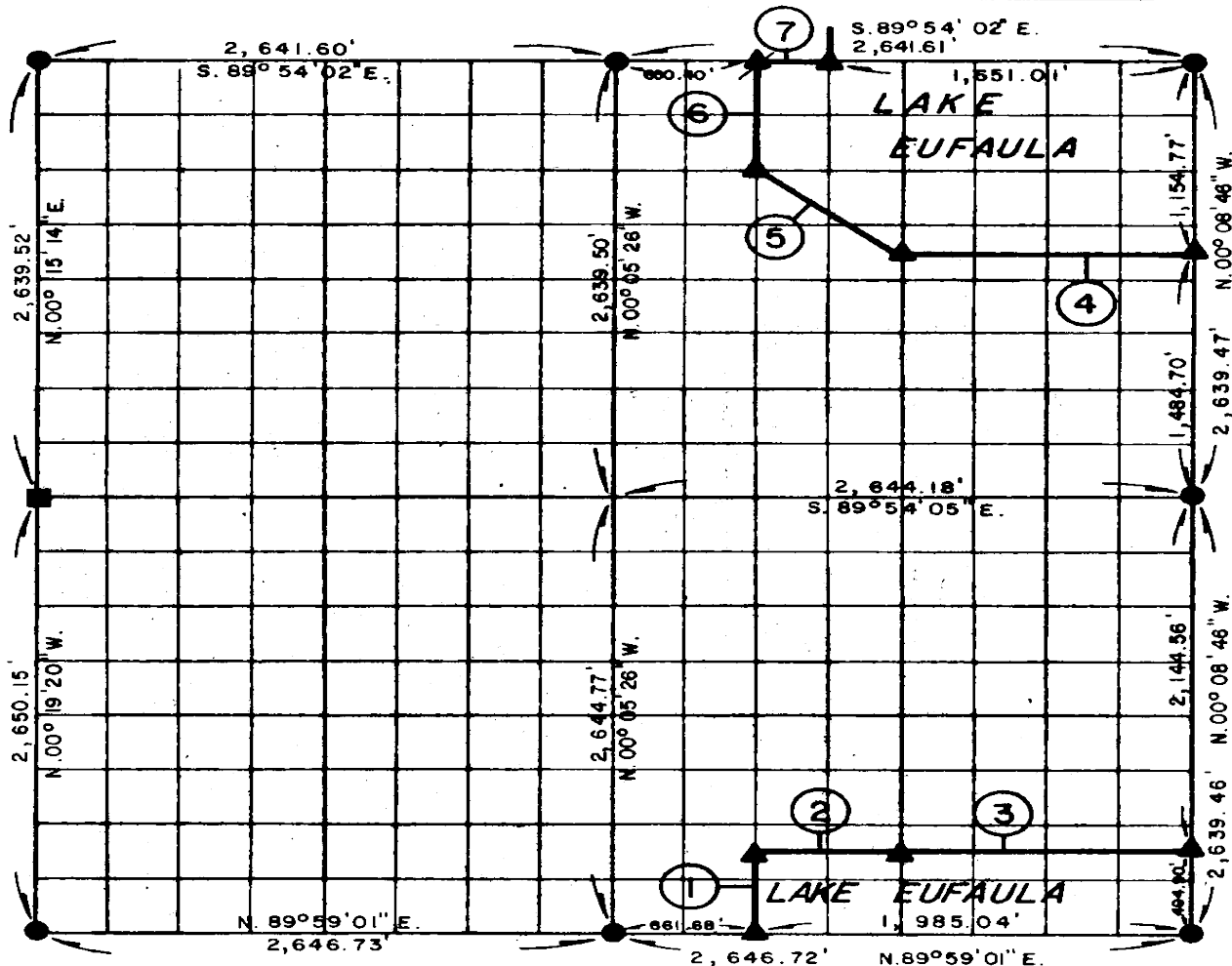


PARTIAL BOUNDARY SURVEYS EUFAULA LAKE OKLAHOMA

Performed Under Contract Number DACW 56-77-C-0096

SEC. 14, T. 5 N., R. 16 E., COUNTY PITTSBURG

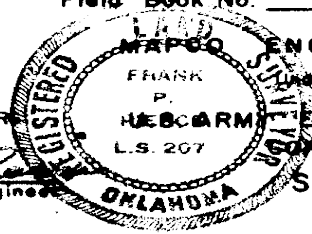


Course No.	Distance	Bearing	Course No.	Distance	Bearing
1.	495.65'	N. 00° 06' 16" W.			
2.	661.56'	S. 89° 59' 41" E.			
3.	1,323.12'	S. 89° 59' 41" E.			
4.	1,321.37'	N. 89° 54' 03" W.			
5.	826.90'	N. 53° 08' 16" W.			
6.	659.87'	N. 00° 06' 16" W.			
7.	330.20'	S. 89° 54' 02" E.			
	5618.67				

CERTIFICATE OF SURVEY

I Herby Certify That The Above Plot is a True and Correct Representation of The Survey Made in Section 14 T. 5 N. R. 16 E. PITTSBURG COUNTY, OKLAHOMA

Field Book No. E 1331 Date JUNE, 1977



MAPCO ENGINEERING CORPORATION
Under The Supervision Of
FRANK P. HEBCARM ENGINEER DISTRICT, TULSA
MEMBER AMERICAN SOCIETY OF ENGINEERS

LEGEND
▲ MONUMENT
□ ORIGINAL CORNER
○ IRON PIN

Registered Professional Engineer
Registered Land Surveyor

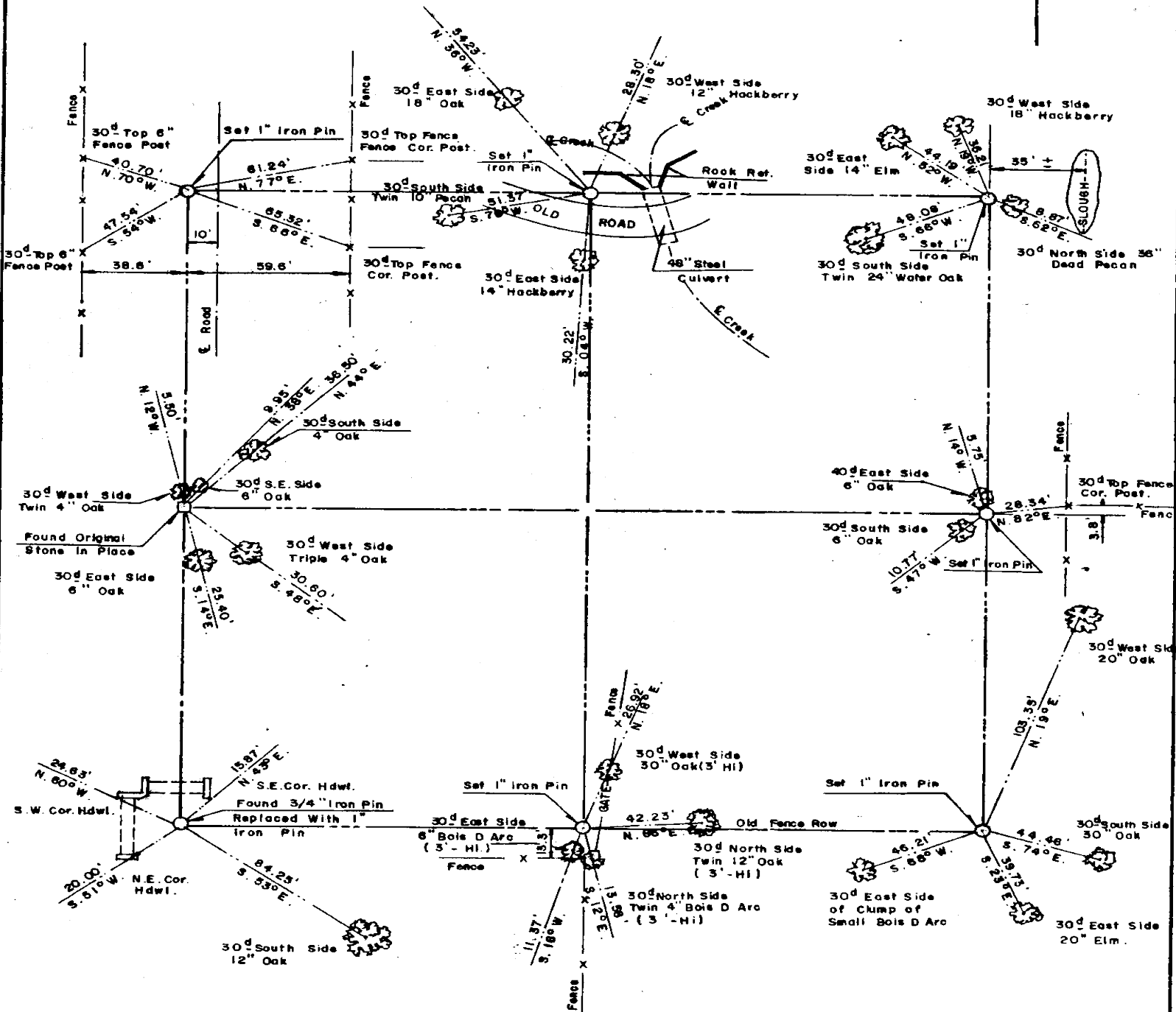
SHEET 1 of 2

602

EUFAULA LAKE OKLAHOMA

SECTION AND QUARTER SECTION CORNER
REFERENCES FOR

SEC. 14, T 5 N, R16E PITTSBURG COUNTY



Scale: 1" = 50'
 Date: JUNE, 1977
 Field book No. E 1331

- LEGEND**
- △ - Monument
 - - Original Corner
 - - Iron pin