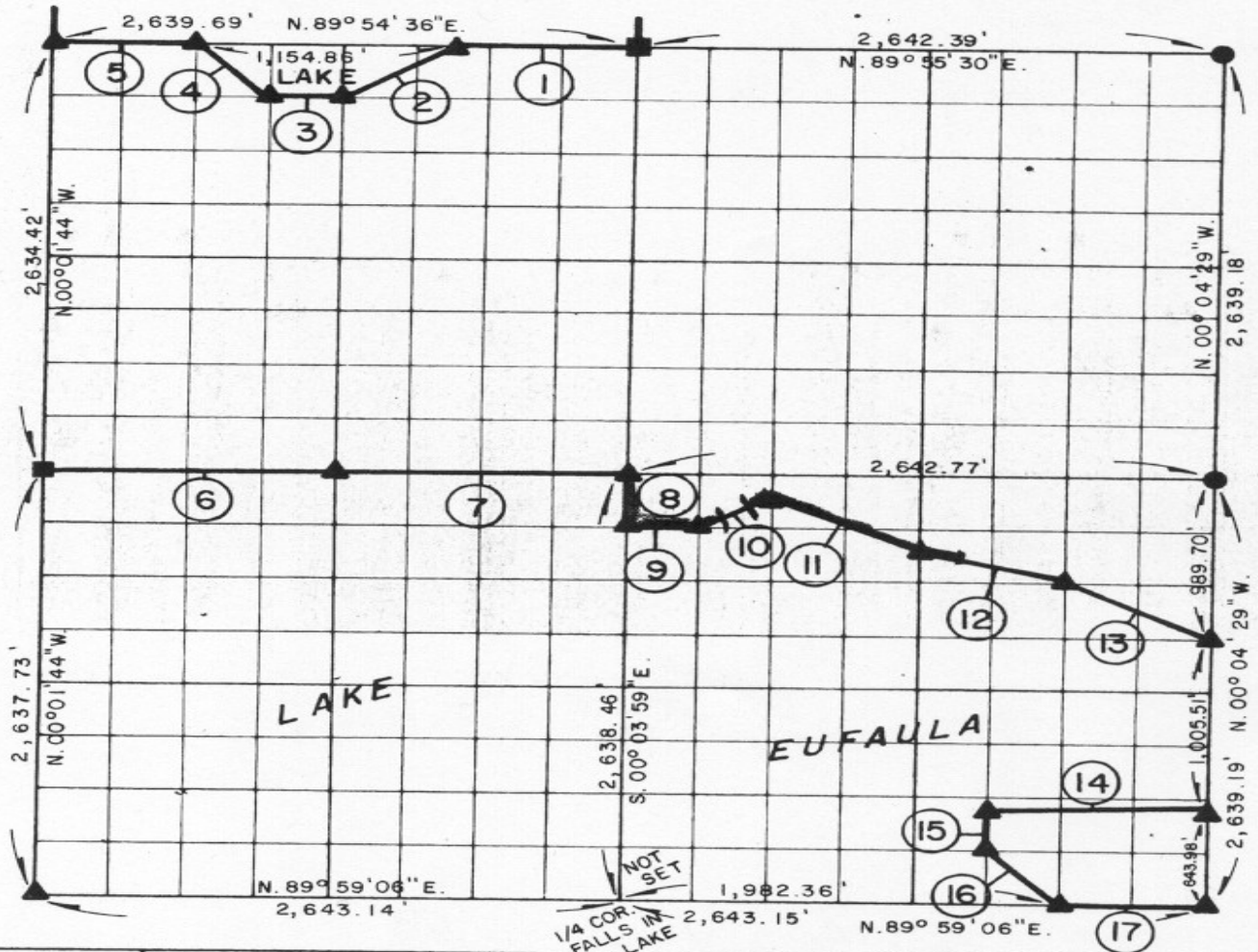


# PARTIAL BOUNDARY SURVEYS EUFAULA LAKE OKLAHOMA

Performed Under Contract Number DACW 56-77-C-0096

SEC. 1, T. 5 N., R. 16 E., COUNTY PITTSBURG



Course No.	Distance	Bearing	Course No.	Distance	Bearing
1.	824.90'	S. 89° 54' 36" W.	14.	990.44'	S. 88° 13' 27" W.
2.	594.30'	S. 56° 20' 26" W.	15.	284.75'	S. 00° 04' 29" E.
3.	329.99'	S. 89° 56' 01" W.	16.	465.52'	S. 45° 04' 51" E.
4.	465.40'	N. 45° 11' 44" W.	17.	660.79'	N. 89° 59' 06" E.
5.	659.92'	S. 89° 54' 36" W.			
6.	1,320.70'	N. 89° 58' 09" E.			
7.	1,320.71'	N. 89° 58' 09" E.			
8.	329.81'	S. 00° 03' 59" E.			
9.	330.35'	N. 89° 58' 16" E.			
10.	369.13'	N. 63° 26' 04" E.			
11.	738.67'	S. 63° 30' 26" E.			
12.	681.11'	S. 76° 00' 50" E.			
13.	738.74'	S. 63° 30' 12" E.			
				11105.23	

**CERTIFICATE OF SURVEY**

I hereby certify that the above plat is a true and correct representation of the survey made in Section 1 T 5 N, R 16 E, PITTSBURG COUNTY, OKLAHOMA

Registered Professional Engineer  
Registered Land Surveyor

Field Book No. E1324

Date JUNE, 1977

590

**MAPCO ENGINEERING CORPORATION**

Under The Supervision Of

**U.S. ARMY ENGINEER DISTRICT, TULSA  
CORPS OF ENGINEERS**

SHEET 1 of 2

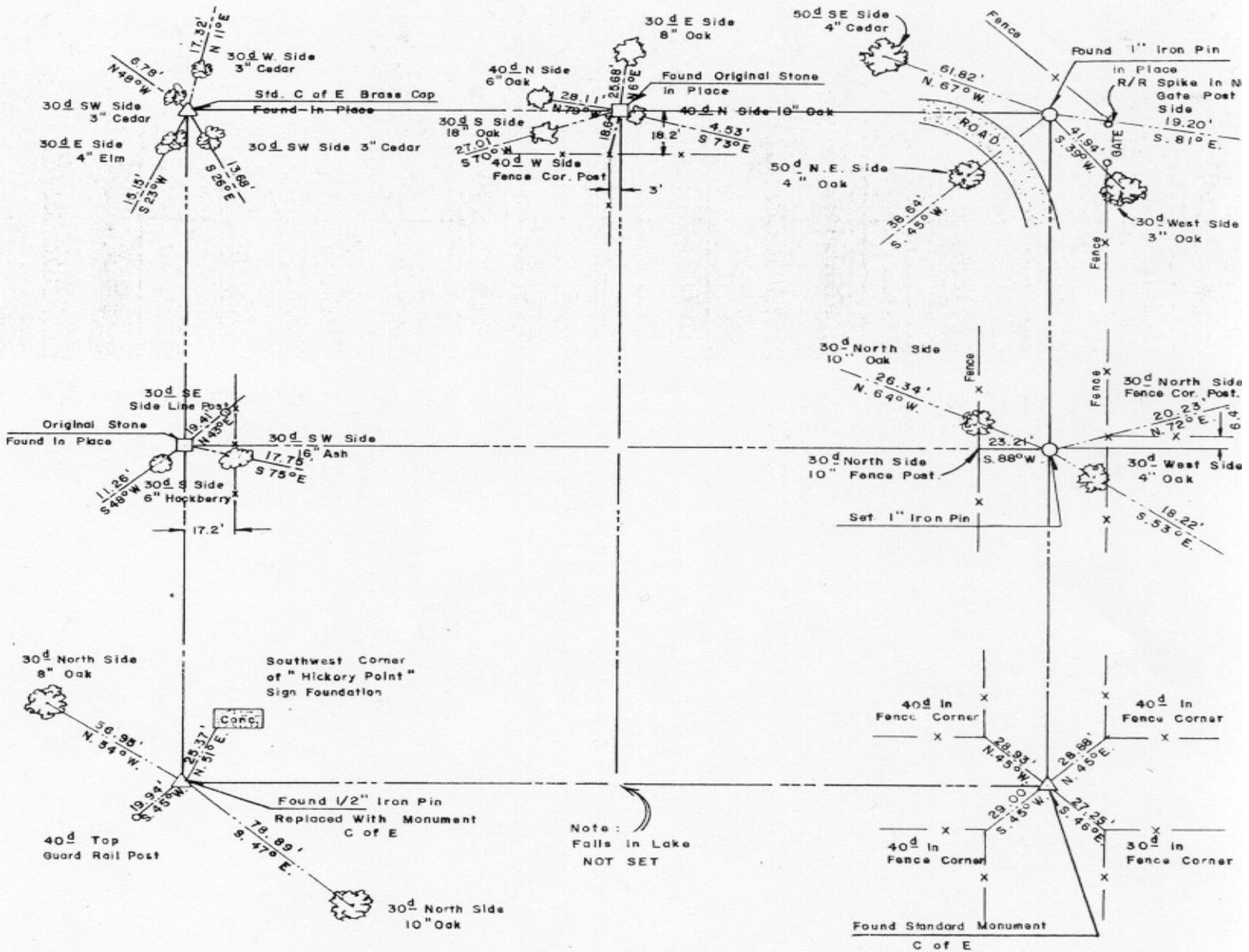
**LEGEND**

- ▲ MONUMENT
- ORIGINAL CORNER
- IRON PIN

# EUFAULA LAKE OKLAHOMA

SECTION AND QUARTER SECTION CORNER  
REFERENCES FOR

SEC. 1, T 5 N, R 16 E PITTSBURG COUNTY



Note:  
Falls in Lake  
NOT SET

Scale: 1" = 50'  
Date: JUNE, 1977  
Field book No. E 1324

**LEGEND**  
 Δ - Monument  
 □ - Original Corner  
 ○ - Iron pin