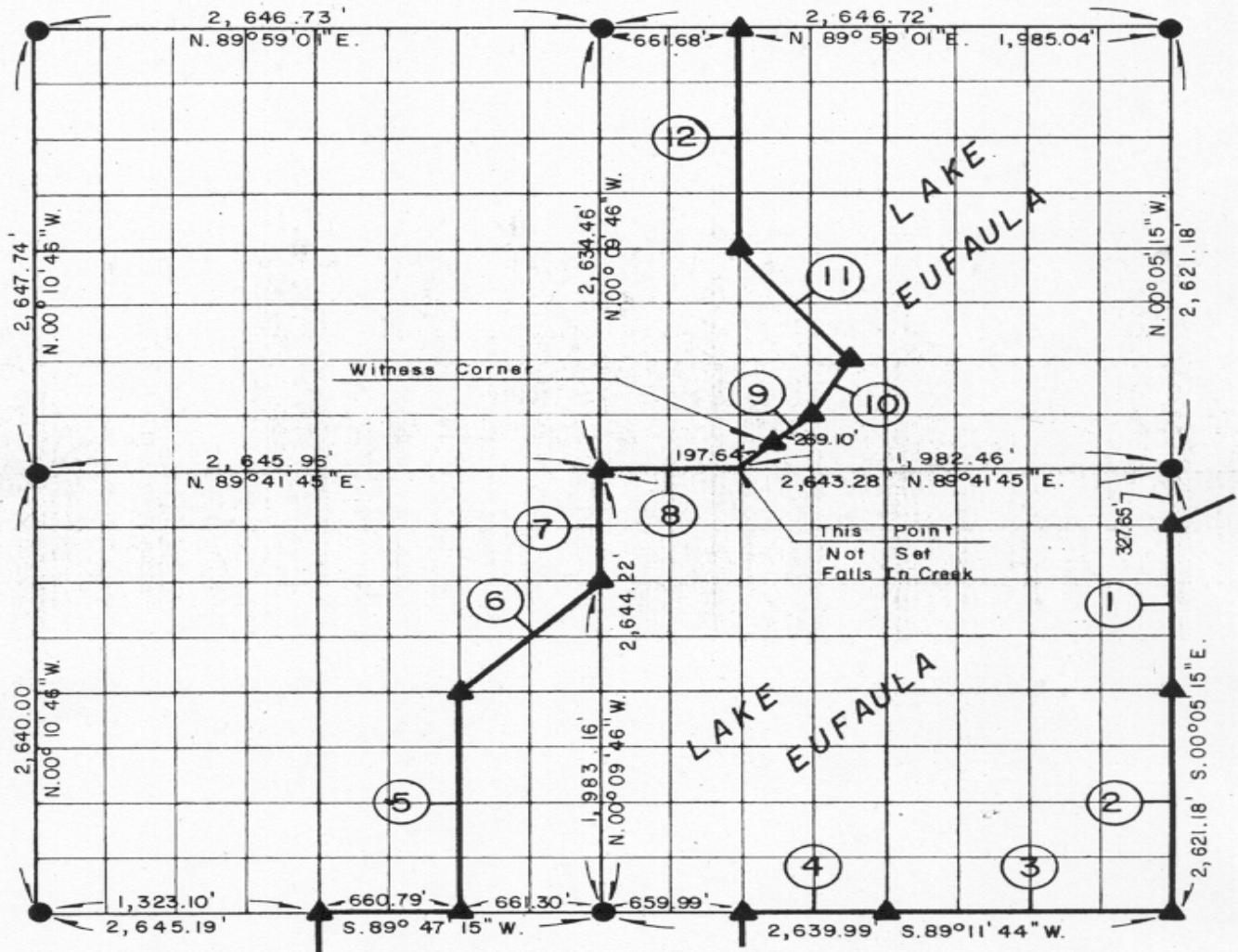


PARTIAL BOUNDARY SURVEYS EUFAULA LAKE OKLAHOMA

Performed Under Contract Number DACW 56-77-C-0096

SEC. 23, T. 5 N., R. 16 E., COUNTY PITTSBURG



Course No.	Distance	Bearing	Course No.	Distance	Bearing
1.	982.94'	S. 00° 05' 15" E.			
2.	1,310.59'	S. 00° 05' 15" E.			
3.	1,320.00'	S. 89° 11' 44" W.			
4.	660.00'	S. 89° 11' 44" W.			
5.	1,321.58'	N. 00° 10' 01" W.			
6.	935.89'	N. 44° 48' 15" E.			
7.	661.06'	N. 00° 09' 46" W.			
8.	660.82'	N. 89° 41' 45" E.			
9.	466.74'	N. 44° 55' 49" E.			
10.	368.14'	N. 26° 32' 18" E.			
11.	823.09'	N. 37° 10' 53" W.			
12.	1,315.57'	N. 00° 08' 38" W.			

CERTIFICATE OF SURVEY
I hereby certify that the above plat is a true and correct representation of the survey made in Section 23 T. 5 N., R. 16 E., PITTSBURG COUNTY, OKLAHOMA.
Frank P. Pierce
Registered Professional Engineer
Registered Land Surveyor

Field Book No. E 1332 Date JUNE, 1977

MAPCO ENGINEERING CORPORATION
Under The Supervision Of
U.S. ARMY ENGINEER DISTRICT, TULSA
CORPS OF ENGINEERS
SHEET 1 of 2

LEGEND
▲ MONUMENT
□ ORIGINAL CORNER
○ IRON PIN

611

