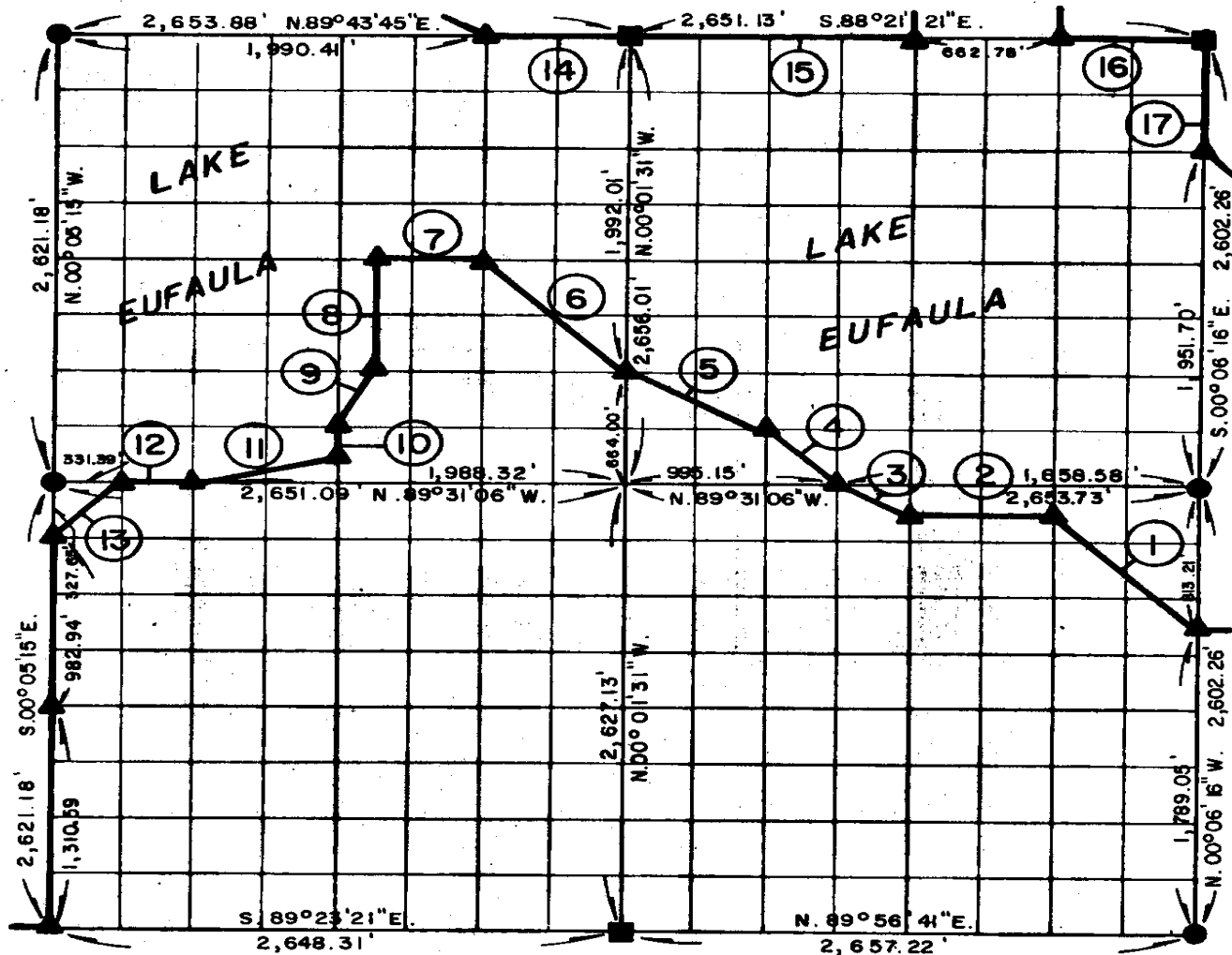


# PARTIAL BOUNDARY SURVEYS EUFAULA LAKE OKLAHOMA

Performed Under Contract Number DACW 56-77-C-0096

SEC. 24, T. 5 N., R. 16 E., COUNTY PITTSBURG



Course No.	Distance	Bearing
1.	933.69'	N. 45° 23' 10" W.
2.	663.49'	N. 89° 33' 07" W.
3.	371.18'	N. 63° 23' 55" W.
4.	470.27'	N. 44° 54' 00" W.
5.	745.16'	N. 62° 55' 01" W.
6.	939.47'	N. 44° 55' 17" W.
7.	497.34'	N. 89° 53' 40" W.
8.	660.19'	S. 00° 03' 09" E.
9.	368.22'	S. 26° 41' 36" W.
10.	164.91'	S. 00° 03' 23" E.
11.	681.48'	S. 76° 28' 41" W.
12.	331.39'	N. 89° 31' 06" W.
13.	463.69'	S. 45° 31' 32" W.

Course No.	Distance	Bearing
14.	663.47'	N. 89° 43' 45" E.
15.	1,325.57'	S. 88° 21' 21" E.
16.	662.78'	S. 88° 21' 21" E.
17.	650.56'	S. 00° 06' 16" E.
10,574.86		

CERTIFICATE OF SURVEY  
I hereby certify that the above plat is a true and correct representation of the survey made in Section 24, T. 5 N., R. 16 E., PITTSBURG COUNTY, OKLAHOMA

Field Book No. E1333 Date JUNE, 1977

**MAPCO ENGINEERING CORPORATION**  
Under the Supervision of  
**FRANK J. PIERCE**  
ENGINEER DISTRICT, TULSA  
CORPS OF ENGINEERS  
SHEET 1 of 2

1012

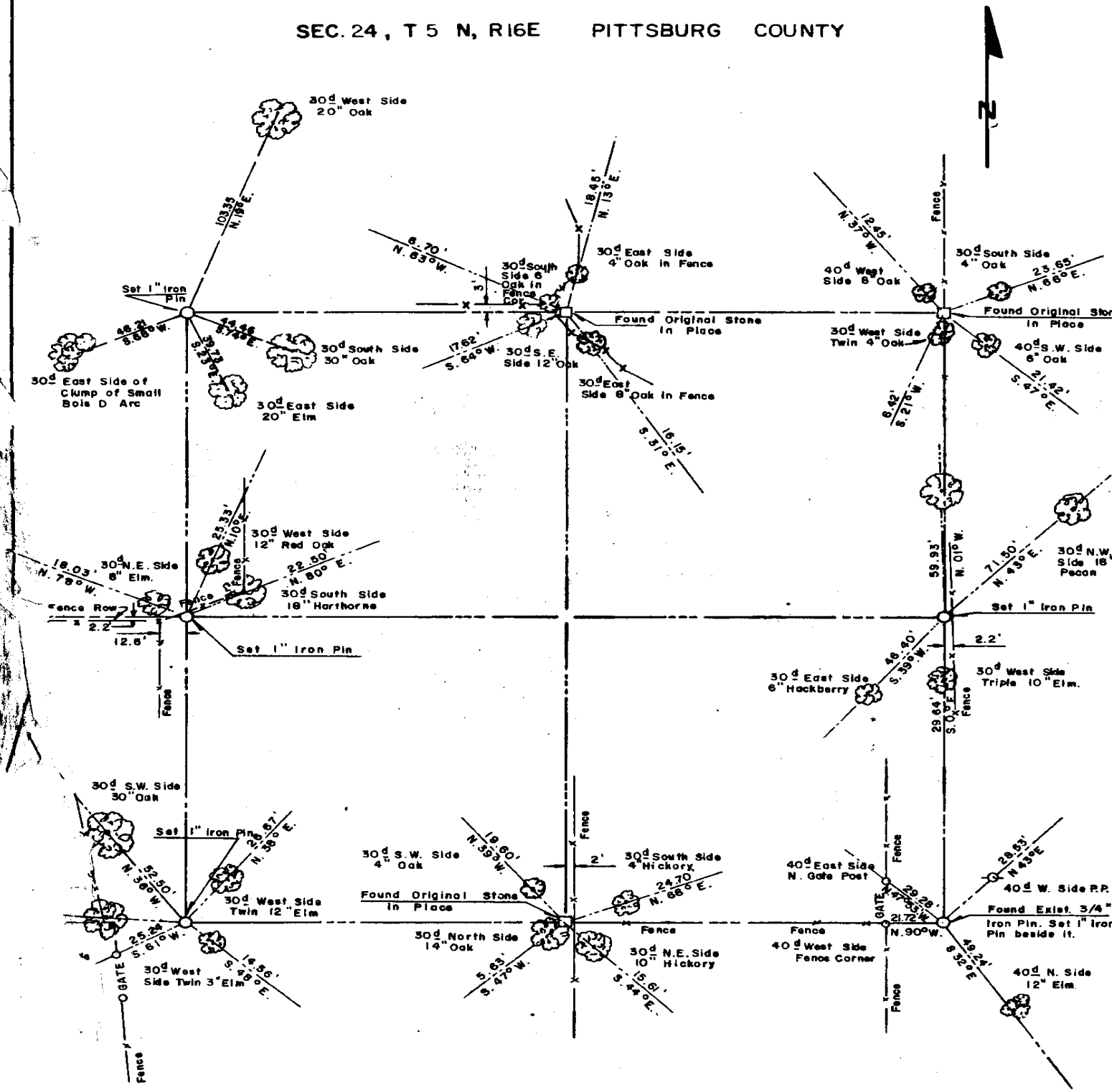
**LEGEND**  
▲ MONUMENT  
□ ORIGINAL CORNER  
○ IRON PIN

Registered Professional Engineer  
Registered Land Surveyor

# EUFAULA LAKE OKLAHOMA

SECTION AND QUARTER SECTION CORNER  
REFERENCES FOR

SEC. 24, T 5 N, R 16E    PITTSBURG COUNTY



Scale: 1" = 50'  
Date: June, 1977  
Field book No. E 1333

- LEGEND**
- △ - Monument
  - - Original Corner
  - - Iron pin