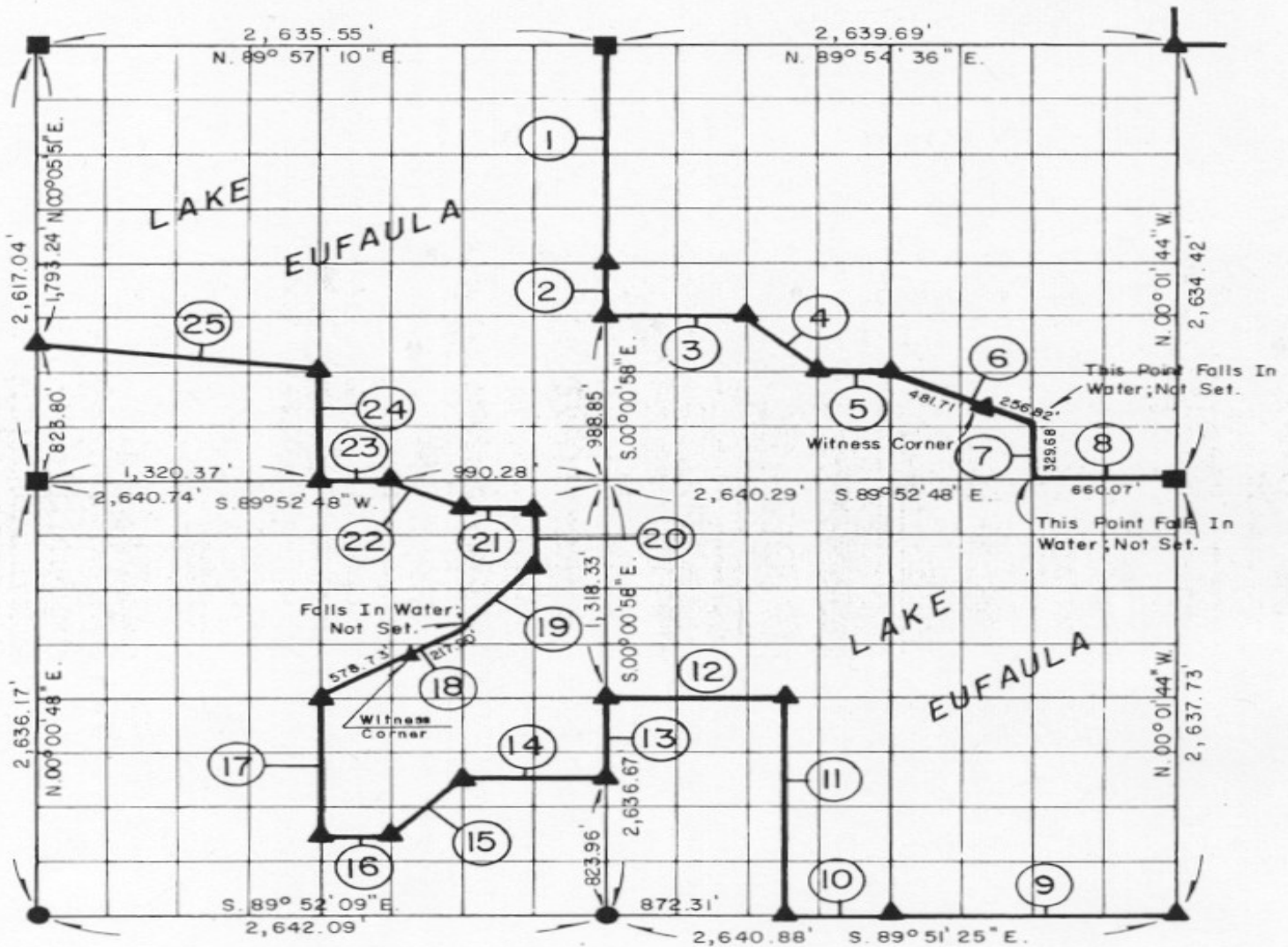


**PARTIAL BOUNDARY SURVEYS
EUFAULA LAKE
OKLAHOMA**

Performed Under Contract Number DACW 56-77-C-0096

SEC. 2, T. 5 N., R. 16 E., COUNTY PITTSBURG



Course No.	Distance	Bearing
1.	1,306.27'	S. 00° 00' 58" E.
2.	329.62'	S. 00° 00' 58" E.
3.	660.02'	S. 89° 53' 11" E.
4.	467.00'	S. 44° 59' 04" E.
5.	330.02'	S. 89° 53' 03" E.
6.	738.53'	S. 63° 22' 13" E.
7.	329.68'	S. 00° 01' 33" E.
8.	660.07'	S. 89° 52' 48" E.
9.	1,320.44'	N. 89° 51' 25" W.
10.	448.13'	N. 89° 51' 25" W.
11.	1,318.51'	N. 00° 01' 21" W.
12.	872.16'	N. 89° 52' 07" W.
13.	494.38'	S. 00° 00' 58" E.

Course No.	Distance	Bearing
14.	660.42'	N. 89° 52' 21" W.
15.	465.99'	S. 45° 07' 03" W.
16.	330.23'	N. 89° 52' 16" W.
17.	823.88'	N. 00° 00' 05" W.
18.	796.63'	N. 55° 58' 50" E.
19.	500.38'	N. 41° 16' 18" E.
20.	329.58'	N. 00° 00' 45" W.
21.	330.10'	N. 89° 52' 46" W.
22.	369.27'	N. 63° 22' 38" W.
23.	330.09'	N. 89° 52' 48" W.
24.	659.14'	N. 00° 02' 27" E.
25.	1,330.01'	N. 82° 46' 05" W.
	16,200.55'	

Field Book No. E1325 Date JUNE, 1977

CERTIFICATE OF SURVEY
I hereby Certify That The
Above Plat is a True and
Correct Representation of
The Survey Made in Section
2 T. 5 N., R. 16 E., PITTSBURG
COUNTY, OKLAHOMA

MAPCO ENGINEERING CORPORATION
Under The Supervision Of
U.S. ARMY ENGINEER DISTRICT, TULSA
CORPS OF ENGINEERS
SHEET 1 of 2

LEGEND
▲ MONUMENT
□ ORIGINAL CORNER
○ IRON PIN

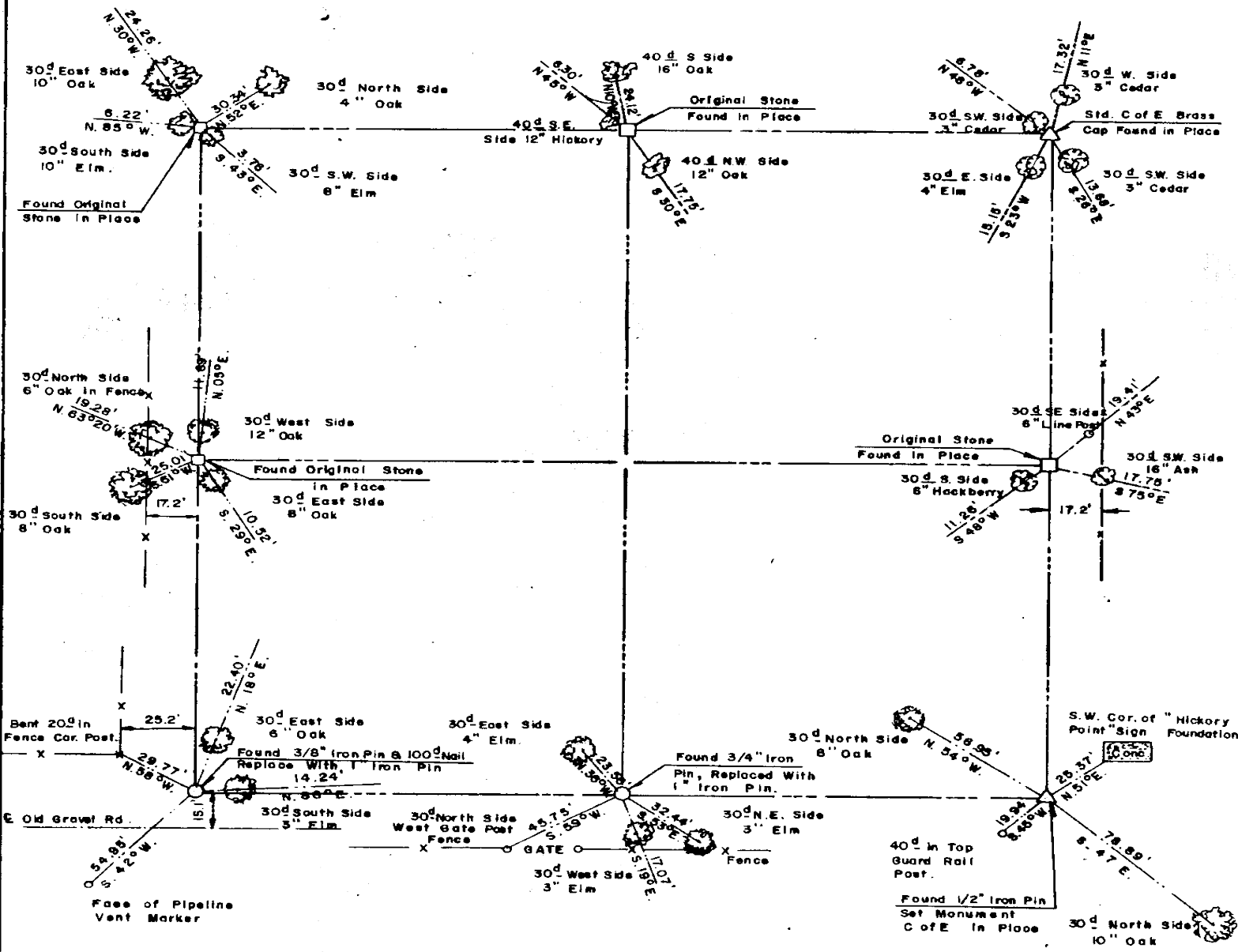
Registered Professional Engineer
Registered Land Surveyor

589
629

EUFAULA LAKE OKLAHOMA

SECTION AND QUARTER SECTION CORNER REFERENCES FOR

SEC. 2, T 5 N, R 16E PITTSBURG COUNTY



Scale: 1" = 50'
Date: JUNE, 1977
Field book No. E 1325

- LEGEND**
- △ - Monument
 - - Original Corner
 - - Iron pin