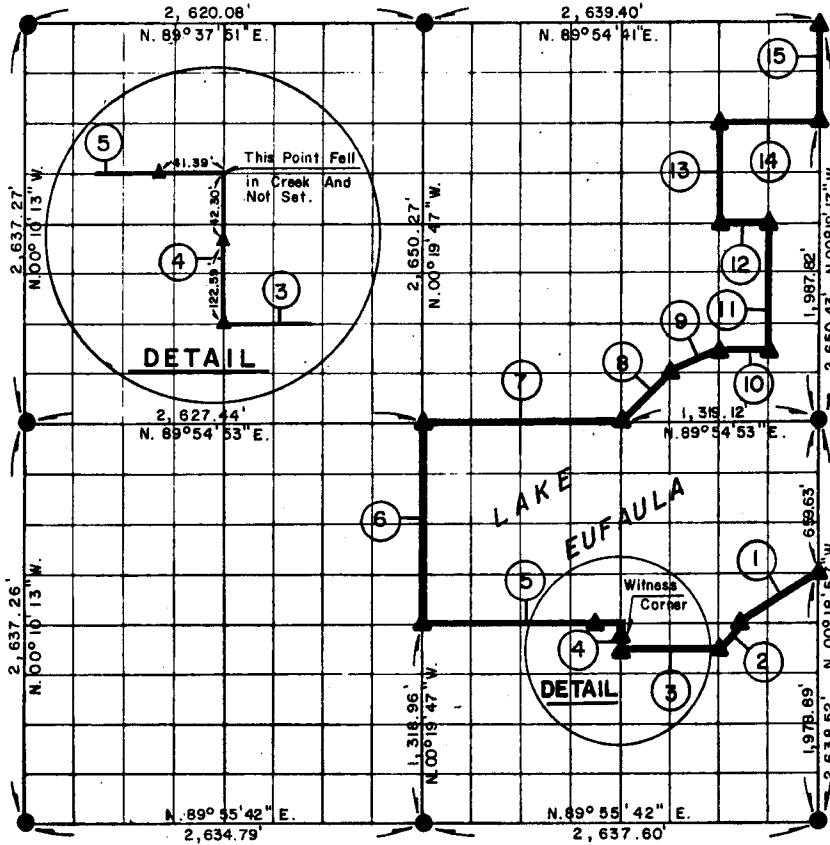


PARTIAL BOUNDARY SURVEYS
 EUFAULA LAKE
 OKLAHOMA

Performed Under Contract Number DACW 56-77-C-0096

SEC. 34, T. 5 N., R. 16 E., COUNTY PITTSBURG



Course No.	Distance	Bearing	Course No.	Distance	Bearing
1.	822.84'	S. 36° 38' 02" W.	14.	659.78	N. 89° 54' 44" E.
2.	232.69'	S. 44° 47' 47" W.	15.	662.61	N. 00° 18' 17" W.
3.	659.47'	S. 89° 55' 21" W.			
4.	164.89'	N. 00° 19' 22" W.			
5.	1,318.96'	S. 89° 55' 18" W.			
6.	1,318.95'	N. 00° 19' 47" W.			
7.	1,319.12'	N. 89° 54' 53" E.			
8.	466.52'	N. 44° 40' 06" E.			
9.	368.48'	N. 63° 11' 59" E.			
10.	329.81'	N. 89° 54' 51" E.			
11.	828.25'	N. 00° 18' 28" W.			
12.	329.85'	S. 89° 54' 47" W.			
13.	662.60'	N. 00° 18' 40" W.			

Field Book No. E 1335 Date JUNE, 1977

CERTIFICATE OF SURVEY

I hereby certify that the above plat is a true and correct representation of the survey made in Section 34, T. 5 N., R. 16 E., PITTSBURG COUNTY, OKLAHOMA



MAPCO ENGINEERING CORPORATION

Under the Supervision Of

U.S. ARMY ENGINEER DISTRICT, TULSA
 CORPS OF ENGINEERS

SHEET 1 of 2

LEGEND

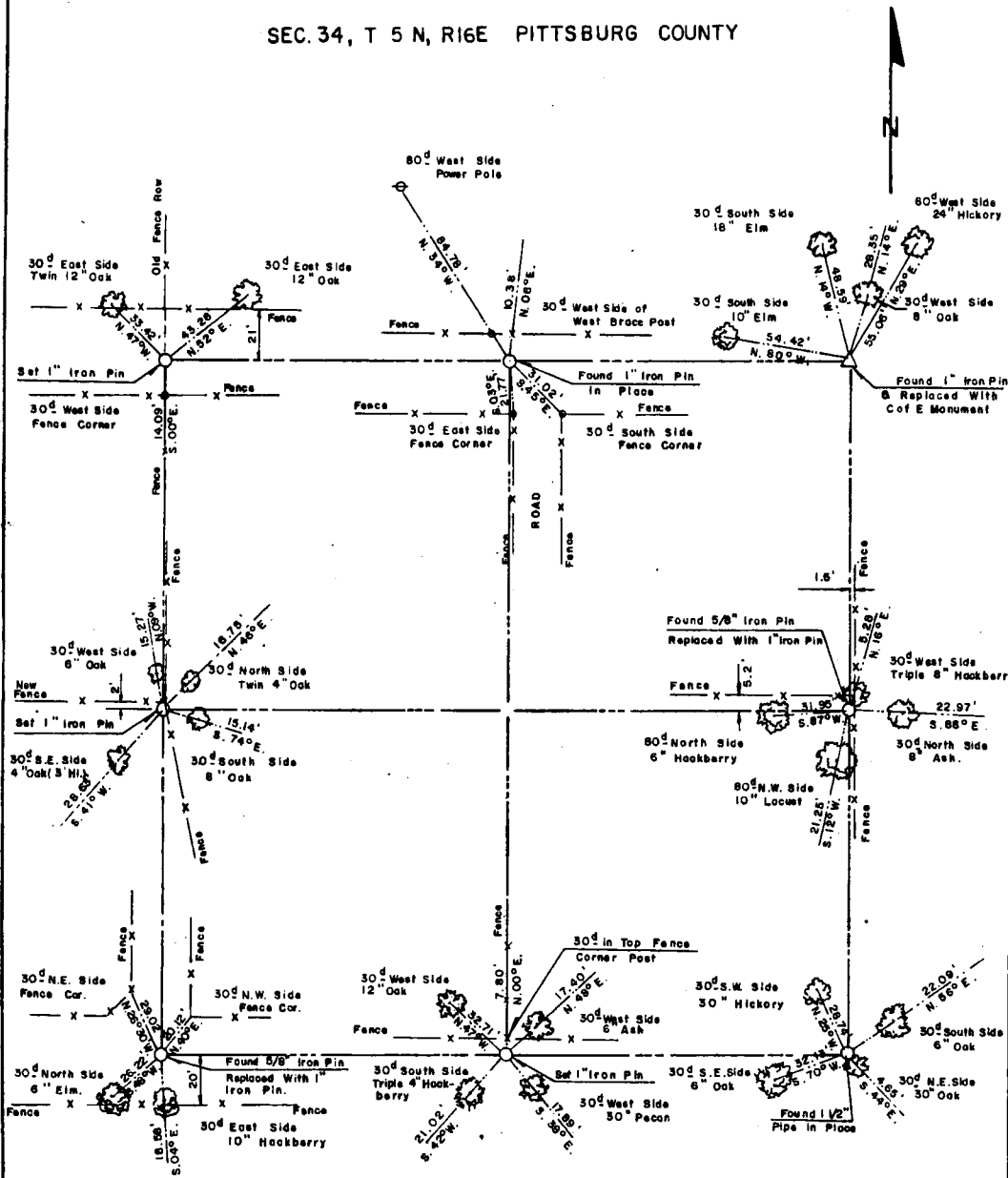
- ▲ MONUMENT
- ORIGINAL CORNER
- IRON PIN

Registered Professional Engineer
 Registered Land Surveyor

EUFAULA LAKE OKLAHOMA

SECTION AND QUARTER SECTION CORNER
REFERENCES FOR

SEC. 34, T 5 N, R 16 E PITTSBURG COUNTY



Scale: 1" = 50'
 Date: June, 1977
 Field book No. E 1335

- LEGEND**
- △ - Monument
 - - Original Corner
 - - Iron pin