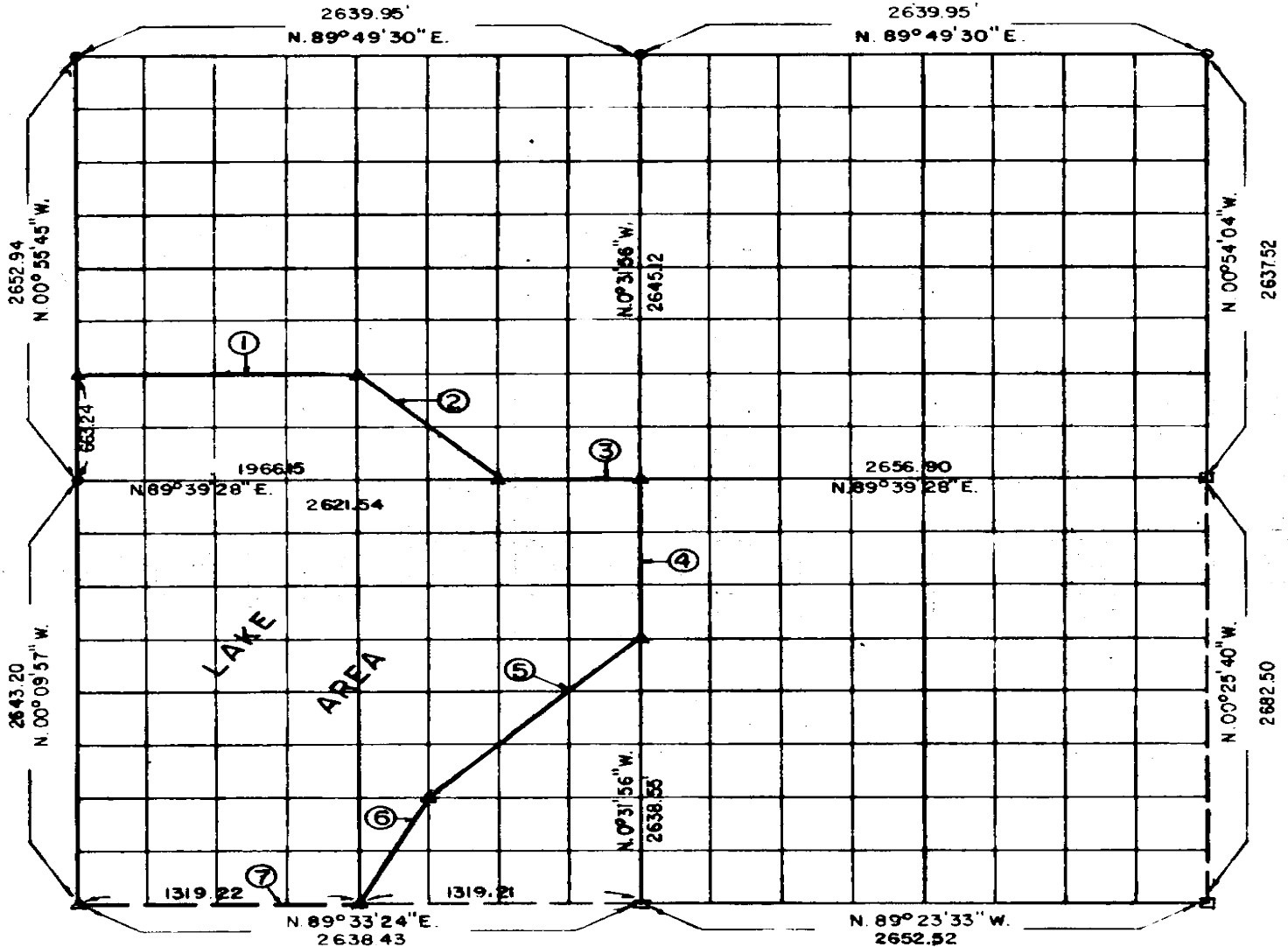


**PARTIAL BOUNDARY SURVEYS  
EUFAULA LAKE  
OKLAHOMA**

Performed Under Contract Number DACW 56-72-C-0121

SEC. 14, T. 5 N., R. 17 E., COUNTY LATIMER



Course No.	Distance	Bearing
1	1,313.07	N. 89° 41' 59" E.
2	934.87	S. 45° 14' 24" E.
3	655.39	N. 89° 39' 28" E.
4	989.46	S. 00° 31' 56" E.
5	1,396.76	S. 44° 28' 39" W.
6	738.13	S. 26° 08' 41" W.
7	1,319.22	S. 89° 33' 24" W.

Course No.	Distance	Bearing

Field Book No. E 1186 A Date 8-25-72

608

MAPCO ENGINEERING CORPORATION

Under The Supervision Of

U.S. ARMY ENGINEER DISTRICT, TULSA  
CORPS OF ENGINEERS

SHEET 1 of 1

LEGEND

- ▲ MONUMENT
- ORIGINAL CORNER
- IRON PIN

CERTIFICATE OF SURVEY  
I Herby Certify That The  
Above Plat is a True and  
Correct Representation of  
The Survey Made in Section  
14 T. 5 N., R. 17 E.,  
COUNTY, OKLAHOMA

*Frank P. Purice*  
Registered Professional Engineer  
Registered Land Surveyor

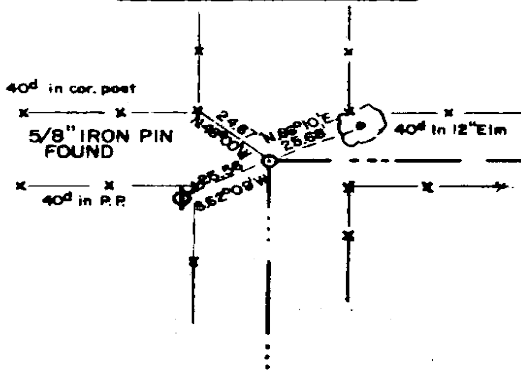
# EUFAULA LAKE OKLAHOMA

## SECTION AND QUARTER SECTION CORNER REFERENCES FOR

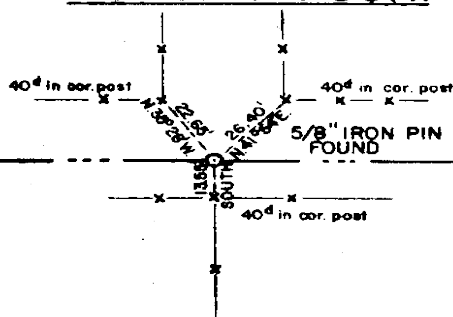
SEC. 14 , T 5 N, R17E

COUNTY-LATIMER

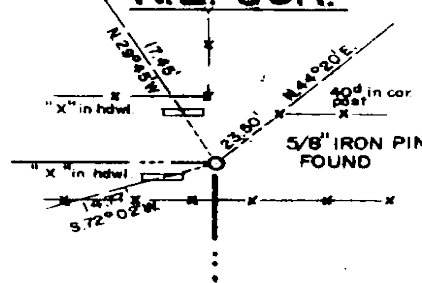
**N.W. CORNER**



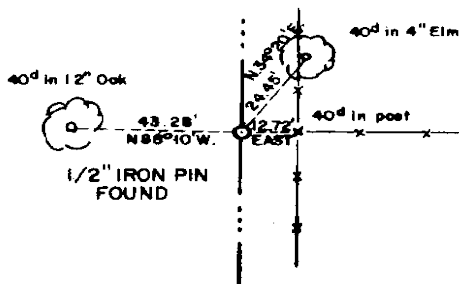
**NORTH 1/4 COR.**



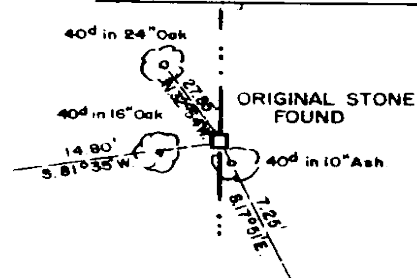
**N.E. COR.**



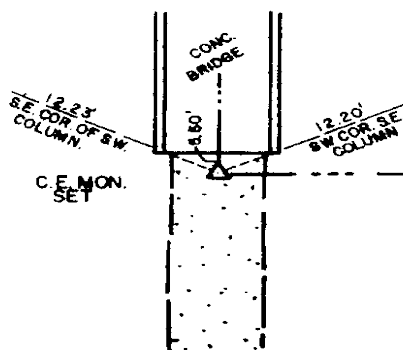
**WEST 1/4 COR.**



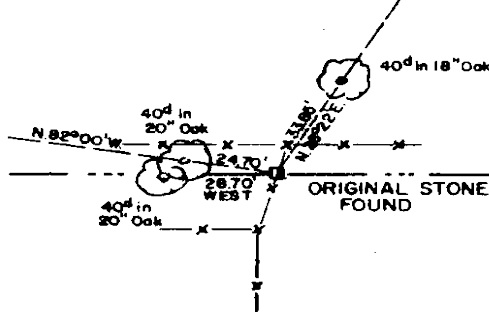
**EAST 1/4 COR.**



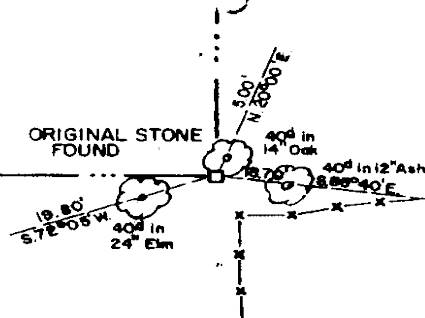
**S.W. CORNER**



**SOUTH 1/4 COR.**



**S.E. COR.**



Scale: 1" = 50'  
Date: 8 - 25 - 72  
Field book No. E-1186 A

**MAPCO**

ENGINEERING CORPORATION

5400 S. Shields Blvd. Ph. 632 - 7761

OKLAHOMA CITY, OKLA. 73129

*Frank P. Pruci*  
REGISTERED PROFESSIONAL ENGINEER  
REGISTERED LAND SURVEYOR

**LEGEND**

- △ - Monument
- - Original Corner
- - Iron pin