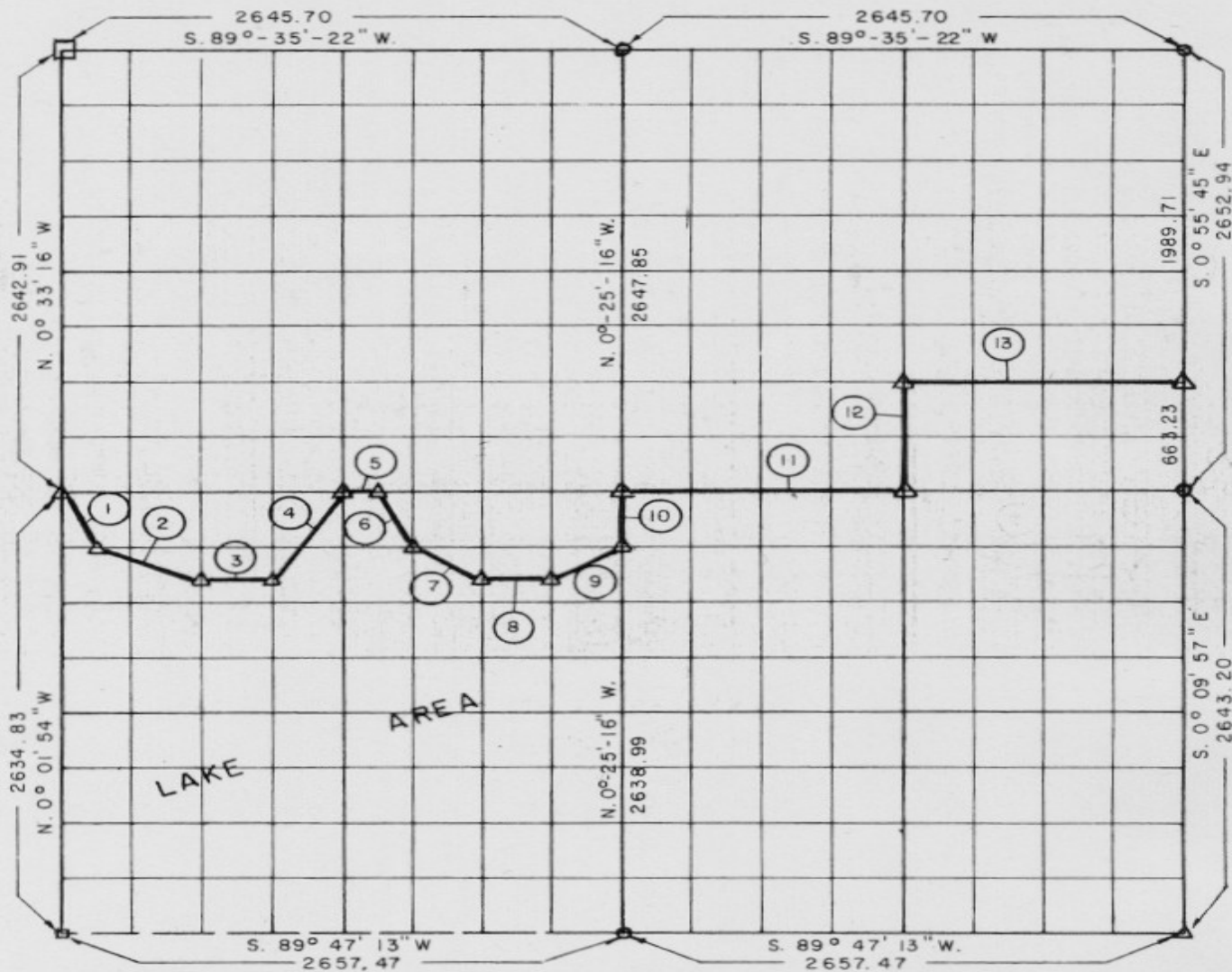


**PARTIAL BOUNDARY SURVEYS
EUFAULA LAKE
OKLAHOMA**

Performed Under Contract Number DACW 56-72-C-0121

SEC. 15, T. 5 N., R. 17 E., COUNTY LATIMER



Course No.	Distance	Bearing	Course No.	Distance	Bearing
1	367.75	S. 26°-42'-33" E			
2	521.56	S. 71°-52'-47" E			
3	330.36	N. 89°-42'-48" E			
4	594.92	N. 33°-30'-20" E			
5	164.97	N. 89°-41'-47" E			
6	368.58	S. 26°-51'-52" E			
7	369.17	S. 63°-46'-02" E			
8	330.36	N. 89°-42'-48" E			
9	368.90	N. 63°-09'-28" E			
10	329.87	N. 00°-25'-16" W			
11	1334.62	N. 89°-41'-47" E			
12	662.60	N. 00°-40'-30" W			
13	1331.68	N. 89°-40'-11" E			

Field Book No. E-1187 A Date 8-25-72

CERTIFICATE OF SURVEY

I Herby Certify That The Above Plot is a True and Correct Representation of The Survey Made in Section

15 T. 5 N., R. 17 E.,
COUNTY, OKLAHOMA

Frank P. Purice
Registered Professional Engineer
Registered Land Surveyor

MAPCO ENGINEERING CORPORATION

Under The Supervision Of

**U.S. ARMY ENGINEER DISTRICT, TULSA
CORPS OF ENGINEERS**

SHEET 1 of 1

LEGEND

- ▲ MONUMENT
- ORIGINAL CORNER
- IRON PIN

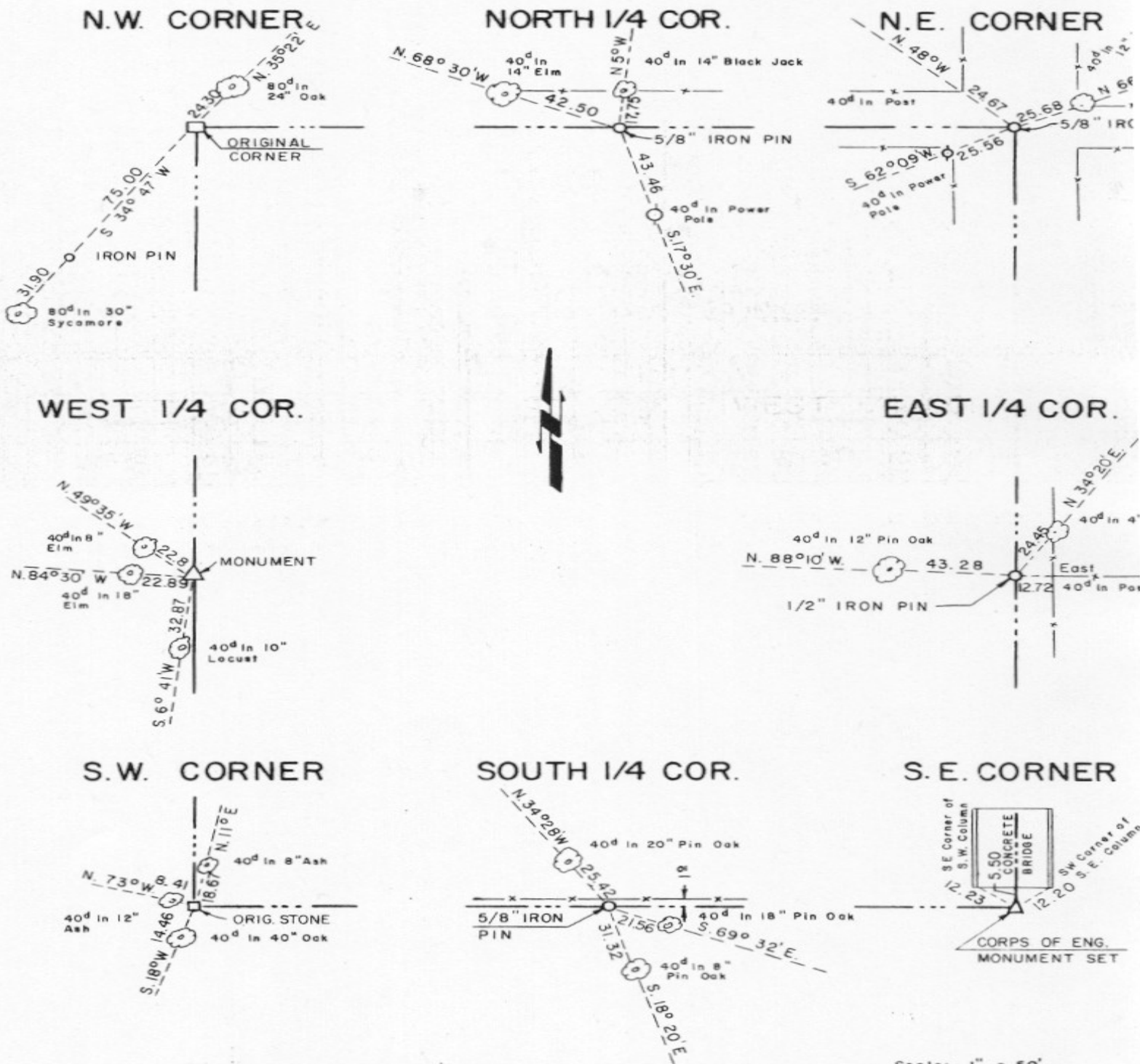
607

EUFAULA LAKE OKLAHOMA

SECTION AND QUARTER SECTION CORNER REFERENCES FOR

SEC. 15, T 5 N, R 17 E

COUNTY- LATIMER



MAPCO

ENGINEERING CORPORATION
 5400 S. Shields Blvd Ph 632-7761
 OKLAHOMA CITY, OKLA. 73129

Frank P. Davis
 REGISTERED PROFESSIONAL ENGINEER
 REGISTERED LAND SURVEYOR

Scale: 1" = 50'
 Date: 8-25-72
 Field book No. E-1187 A

LEGEND
 Δ - Monument
 □ - Original Corner
 ○ - Iron pin