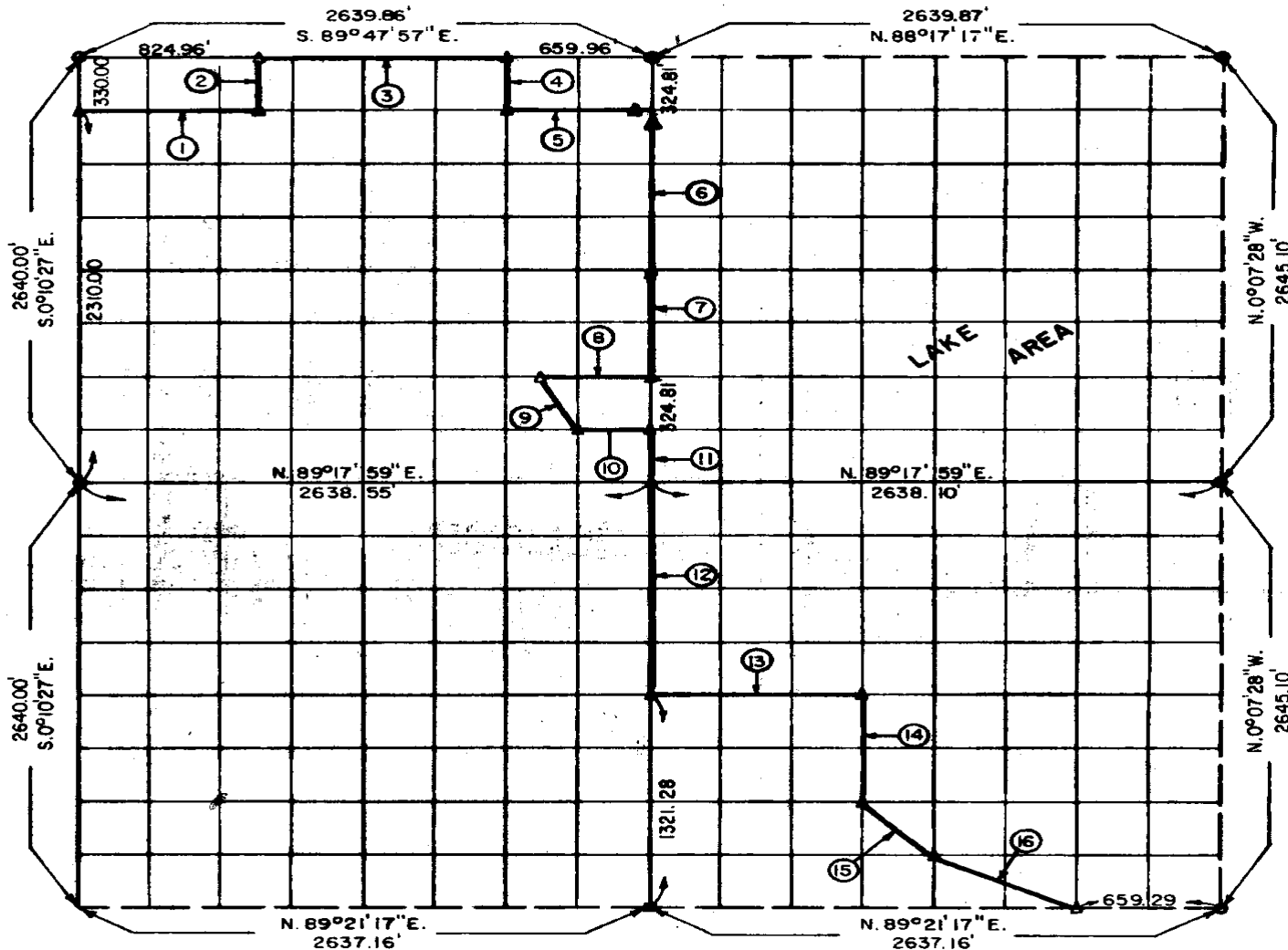


**PARTIAL BOUNDARY SURVEYS
EUFAULA LAKE
OKLAHOMA**

Performed Under Contract Number DACW 56-72-C-0121

SEC. 17, T. 5 N., R. 17 E., COUNTY PITTSBURG



Course No.	Distance	Bearing	Course No.	Distance	Bearing
1	824.91'	S. 89°54'42" E.	14	660.88'	S. 0°08'13" E.
2	328.38'	N. 0°09'54" W.	15	464.66'	S. 45°19'36" E.
3	1154.94'	S. 89°47'57" E.	16	734.84'	S. 63°55'13" E.
4	326.11'	S. 0°09'07" E.			
5	659.91'	S. 89°54'42" E.			
6	974.43'	S. 0°08'39" E.			
7	649.62'	S. 0°08'39" E.			
8	494.79'	S. 89°31'31" W.			
9	364.02'	S. 27°05'20" E.			
10	329.84'	N. 89°24'45" E.			
11	324.81'	S. 0°08'39" E.			
12	1321.28'	S. 0°08'39" E.			
13	989.11'	N. 89°19'38" E.			

CERTIFICATE OF SURVEY
I Herby Certify That The Above Plot is a True and Correct Representation of The Survey Made in Section 17, T. 5 N., R. 17 E., PITTSBURG COUNTY, OKLAHOMA
Frank P. Pugh
Registered Professional Engineer
Registered Land Surveyor

Field Book No. E 1189 A Date 8-25-72
MAPCO ENGINEERING CORPORATION
Under The Supervision Of
U.S. ARMY ENGINEER DISTRICT, TULSA
CORPS OF ENGINEERS
SHEET 1 of 1

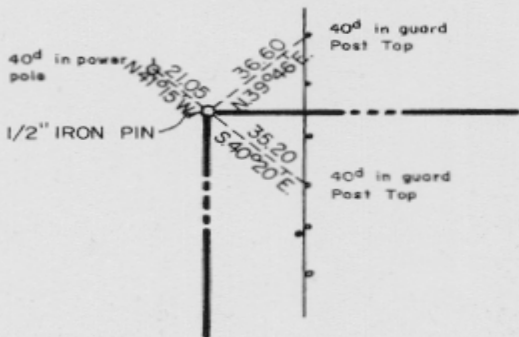
605
LEGEND
▲ MONUMENT
□ ORIGINAL CORNER
○ IRON PIN

EUFAULA LAKE OKLAHOMA

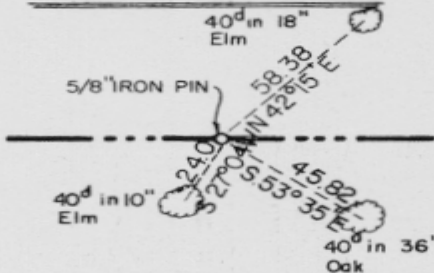
SECTION AND QUARTER SECTION CORNER REFERENCES FOR

SEC. 17, T 5 N, R 17 E, I. M., COUNTY- PITTSBURG

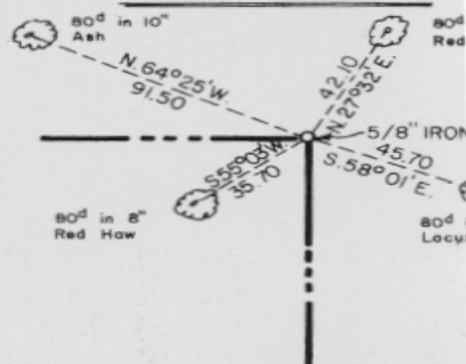
N.W. CORNER



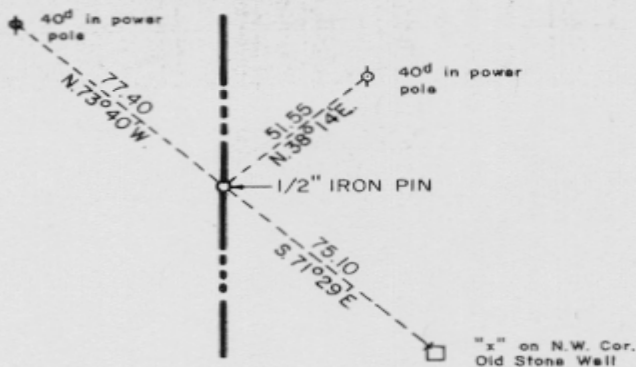
NORTH 1/4 COR.



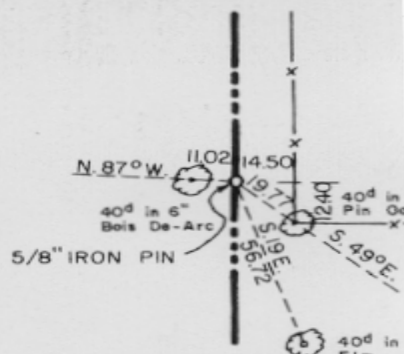
N.E. CORNER



WEST 1/4 COR.



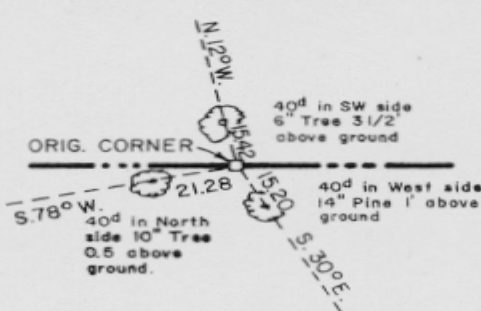
EAST 1/4 COR.



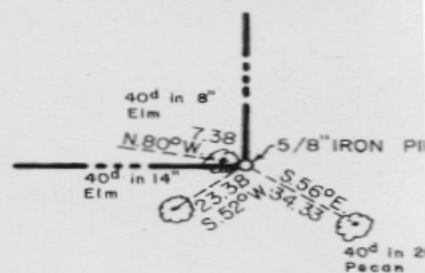
S.W. CORNER



SOUTH 1/4 COR.



S.E. CORNER



Scale: 1" = 50'
Date: 8-25-72
Field book No. E 1189 A

MAPCO

ENGINEERING CORPORATION

5400 S. Shields Blvd. Ph. 632-7761

OKLAHOMA CITY, OKLA. 73129

Frank P. Davis
REGISTERED PROFESSIONAL ENGINEER
REGISTERED LAND SURVEYOR

LEGEND

- △ - Monument
- - Original Corner
- - Iron pin