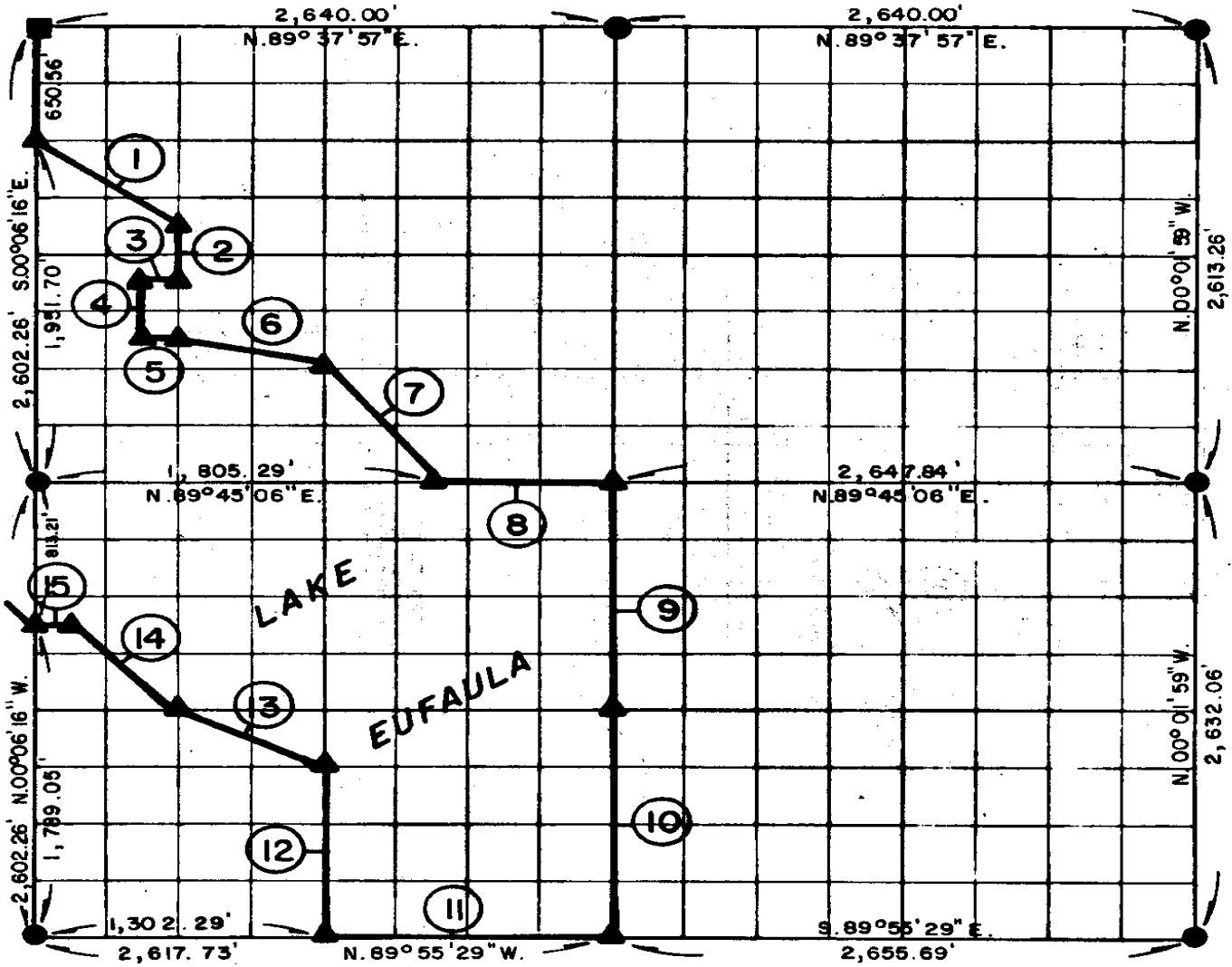


**PARTIAL BOUNDARY SURVEYS
EUFAULA LAKE
OKLAHOMA**

Performed Under Contract Number DACW 56-77-C-0096

SEC. 19, T. 5 N., R. 17 E., COUNTY PITTSBURG



Course No.	Distance	Bearing	Course No.	Distance	Bearing
1.	816.62'	S. 53° 37' 34" E.	14.	688.87'	N. 44° 58' 16" W.
2.	325.46'	S. 00° 03' 55" W.	15.	162.47'	S. 89° 51' 10" W.
3.	163.91'	S. 89° 41' 58" W.			
4.	325.41'	S. 00° 01' 22" W.			
5.	163.67'	N. 89° 42' 52" E.			
6.	677.98'	S. 76° 23' 27" E.			
7.	815.18'	S. 37° 13' 23" E.			
8.	823.58'	N. 89° 45' 06" E.			
9.	1,308.55'	S. 00° 08' 22" W.			
10.	1,308.55'	S. 00° 08' 22" W.			
11.	1,315.44'	N. 89° 55' 29" W.			
12.	978.62'	N. 00° 05' 24" E.			
13.	733.78'	N. 63° 41' 29" W.			

Field Book No. E 1337 Date JUNE, 1977

613

MAPCO ENGINEERING CORPORATION

Under The Supervision Of

U.S. ARMY ENGINEER DISTRICT, TULSA
CORPS OF ENGINEERS

SHEET 1 of 2

LEGEND

- ▲ MONUMENT
- ORIGINAL CORNER
- IRON PIN

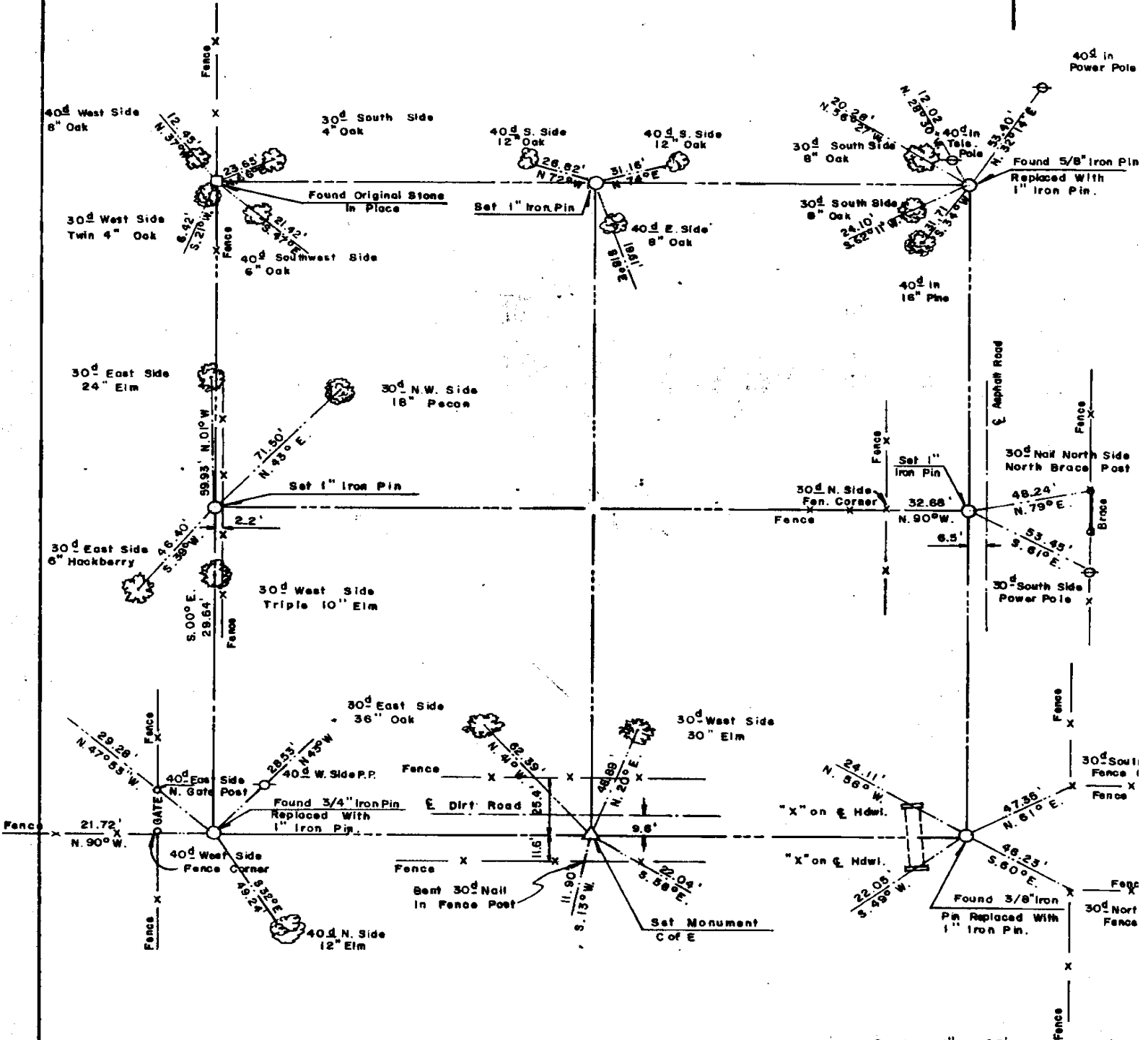
CERTIFICATE OF SURVEY
I Hereby Certify That The
Above Plot is a True and
Correct Representation of
The Survey Made in Section
19 T. 5 N., R. 17 E., PITTSBURG
COUNTY, OKLAHOMA

Registered Professional Engineer
Registered Land Surveyor

EUFAULA LAKE OKLAHOMA

SECTION AND QUARTER SECTION CORNER REFERENCES FOR

SEC. 19, T 5 N, R17E PITTSBURG COUNTY



LEGEND

- Δ - Monument
- - Original Corner
- - Iron pin