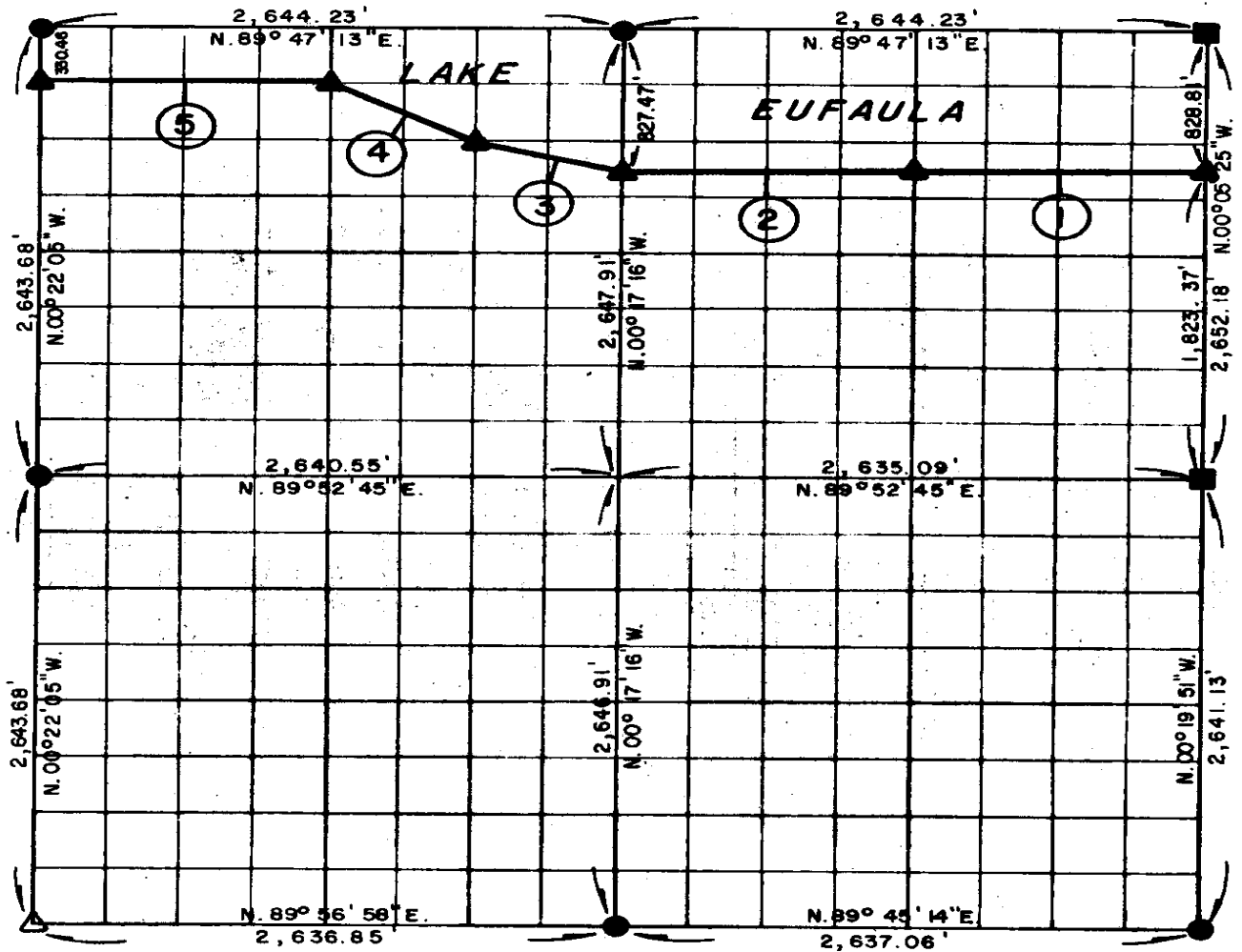


**PARTIAL BOUNDARY SURVEYS  
EUFAULA LAKE  
OKLAHOMA**

Performed Under Contract Number DACW 56-77-C-0096

SEC. 21, T. 5 N., R. 17 E., COUNTY PITTSBURG



Course No.	Distance	Bearing	Course No.	Distance	Bearing
1.	1,320.68'	S. 89° 48' 57" W.			
2.	1,320.69'	S. 89° 48' 57" W.			
3.	681.50'	N. 76° 08' 10" W.			
4.	739.68'	N. 63° 37' 52" W.			
5.	1,321.89'	S. 89° 47' 55" W.			

**CERTIFICATE OF SURVEY**

I hereby Certify That The Above Plat is a True and Correct Representation of The Survey Made in Section 21 T. 5 N., R. 17 E., PITTSBURG COUNTY, OKLAHOMA

Field Book No. E 1338

Date JUNE, 1977



**M&P CO ENGINEERING CORPORATION**  
Under The Supervision Of  
**FRANK P. PIERCE**  
ENGINEER DISTRICT, TULSA  
CORPS OF ENGINEERS

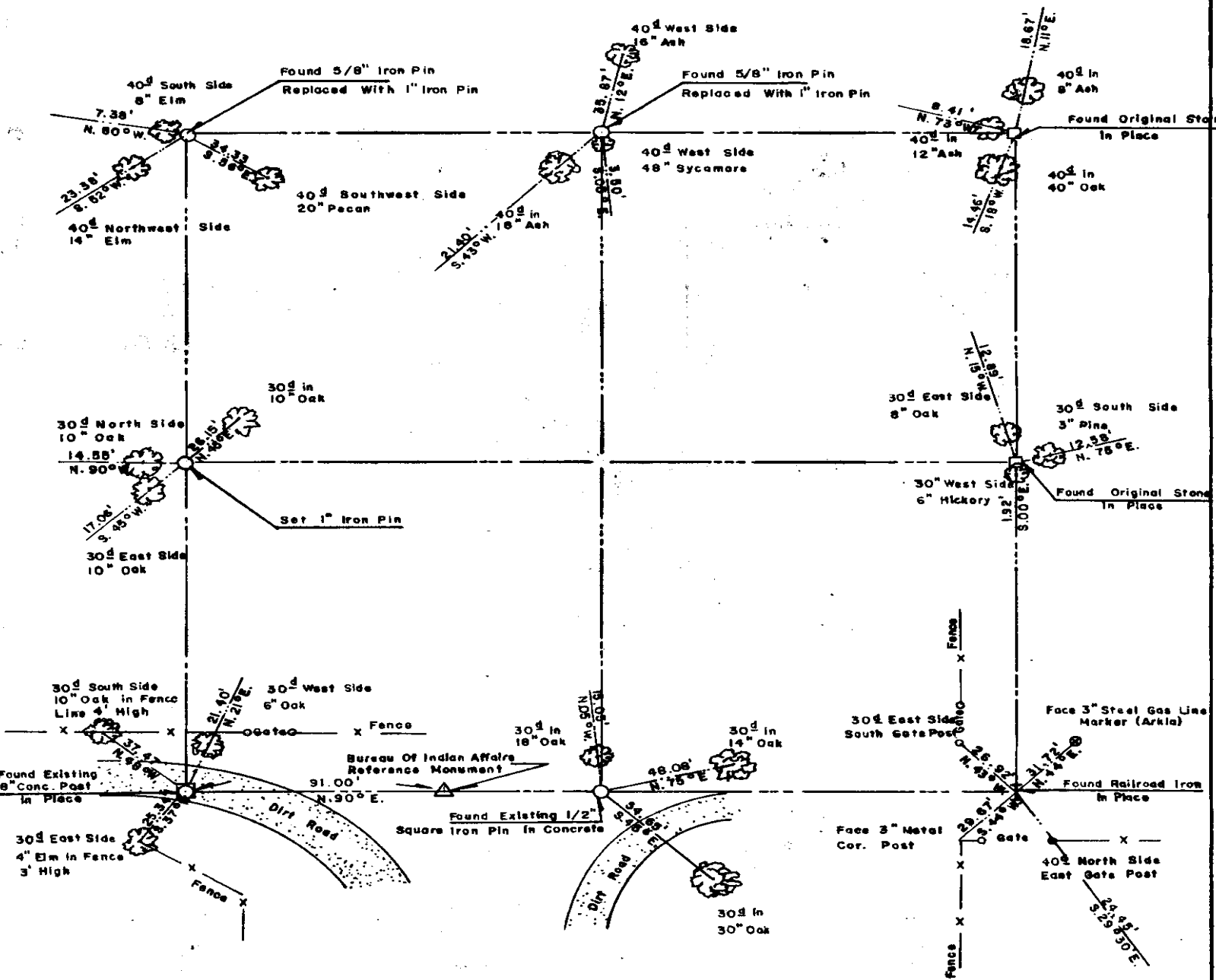
- LEGEND**
- ▲ MONUMENT
  - ORIGINAL CORNER
  - IRON PIN

615

Registered Professional Engineer

# EUFAULA LAKE OKLAHOMA

SECTION AND QUARTER SECTION CORNER  
REFERENCES FOR  
SEC. 21, T 5 N, R17E PITTSBURG COUNTY



Scale: 1" = 50'  
Date: JUNE, 1977  
Field book No. E. 1338

- LEGEND**
- △ - Monument
  - - Original Corner
  - - Iron pin