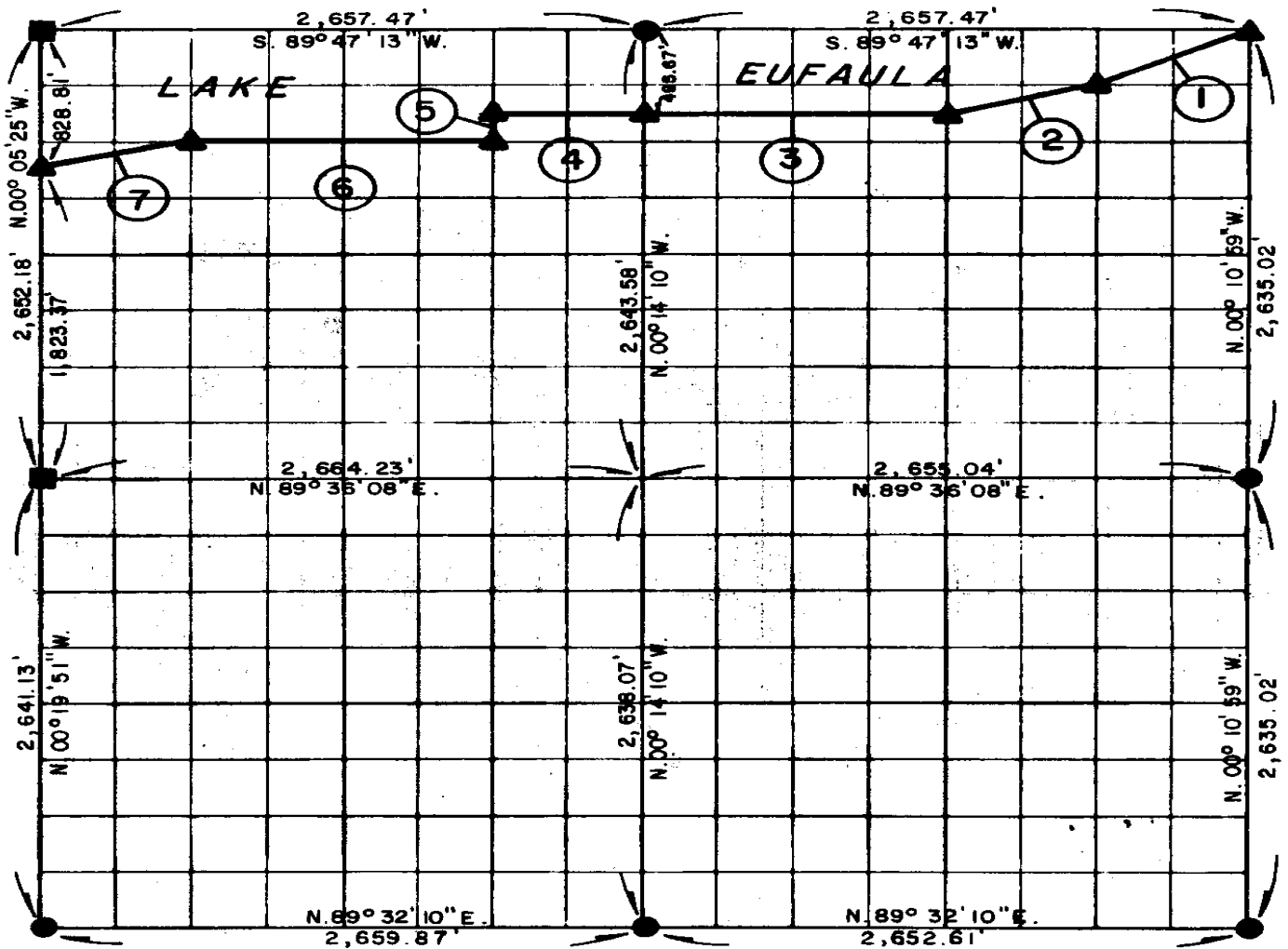


**PARTIAL BOUNDARY SURVEYS
EUFAULA LAKE
OKLAHOMA**

Performed Under Contract Number DACW 56-77-C-0096

SEC. 22 , T. 5 N. , R. 17E. , COUNTY LATIMER



Course No.	Distance	Bearing	Course No.	Distance	Bearing
1.	741.74'	S. 63° 24' 02" W.			
2.	684.54'	S. 75° 49' 11" W.			
3.	1,328.51'	S. 89° 45' 08" W.			
4.	664.68'	S. 89° 45' 08" W.			
5.	165.36'	S. 00° 11' 59" E.			
6.	1,329.58'	S. 89° 44' 27" W.			
7.	685.61'	S. 75° 44' 59" W.			

Field Book No. E 1339 Date JUNE, 1977

MAPCO ENGINEERING CORPORATION

Under The Supervision Of

**U.S. ARMY ENGINEER DISTRICT, TULSA
CORPS OF ENGINEERS**

LEGEND
 ▲ MONUMENT
 ○ ORIGINAL CORNER
 ○ IRON PIN

SHEET 1 of 2

CERTIFICATE OF SURVEY
 I Hereby Certify That The Above Plat is a True and Correct Representation of The Survey Made in Section 22 T5 N. R17E. LATIMER COUNTY, OKLAHOMA

Registered Professional Engineer
 Registered Land Surveyor



