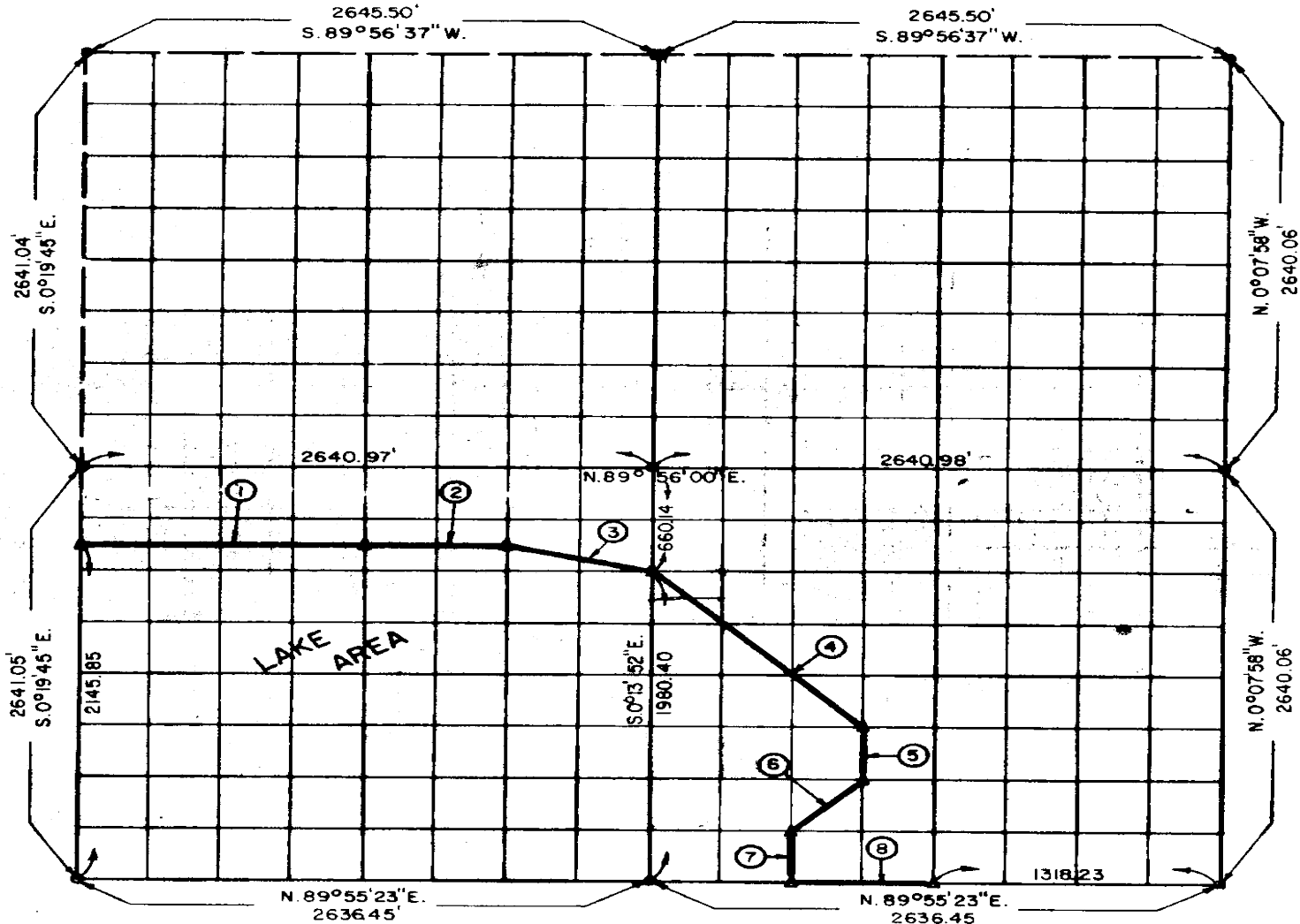


**PARTIAL BOUNDARY SURVEYS
EUFAULA LAKE
OKLAHOMA**

Performed Under Contract Number DACW 56-72-C-0121

SEC. 9, T. 5 N., R. 17 E., COUNTY PITTSBURG



Course No.	Distance	Bearing	Course No.	Distance	Bearing
1	1320.06'	N. 89°55'53" E.			
2	660.03'	N. 89°55'53" E.			
3	680.78'	S. 76°02'18" E.			
4	1401.65'	S. 45°07'35" E.			
5	330.04'	S. 0°11'39" E.			
6	465.98'	S. 44°49'44" W.			
7	330.05'	S. 0°12'24" E.			
8	659.11'	N. 89°55'23" E.			

CERTIFICATE OF SURVEY
I Hereby Certify That The Above Plot is a True and Correct Representation of The Survey Made in Section 9, T. 5 N., R. 17 E., PITTSBURG COUNTY, OKLAHOMA
Frank P. Purce
Registered Professional Engineer
Registered Land Surveyor

Field Book No. E-1185 A Date 8-25-72
MAPCO ENGINEERING CORPORATION
Under The Supervision Of
U.S. ARMY ENGINEER DISTRICT, TULSA
CORPS OF ENGINEERS
SHEET 1 of 1

598

LEGEND
▲ MONUMENT
□ ORIGINAL CORNER
○ IRON PIN