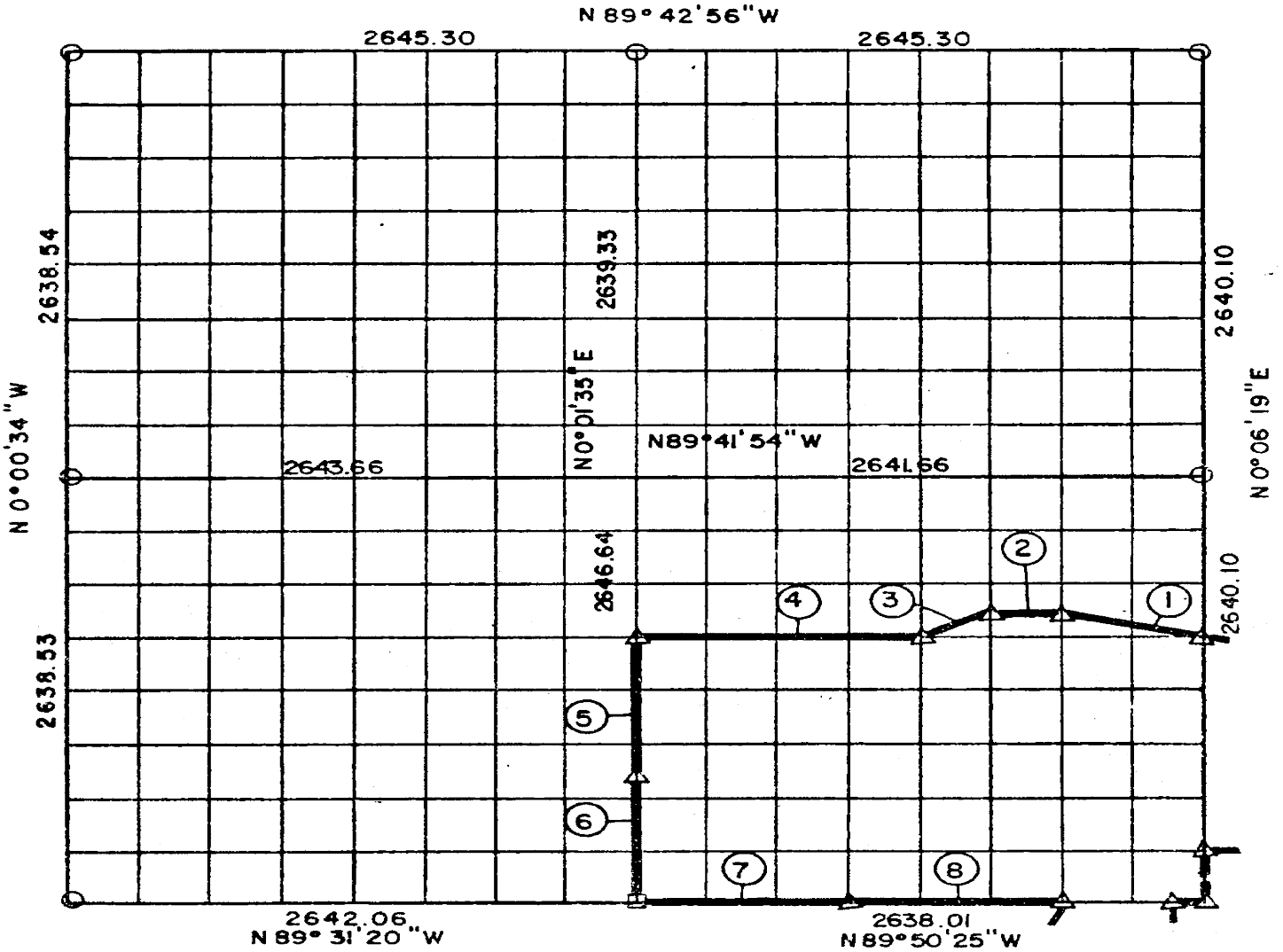


PARTIAL BOUNDARY SURVEYS
AREA "B"

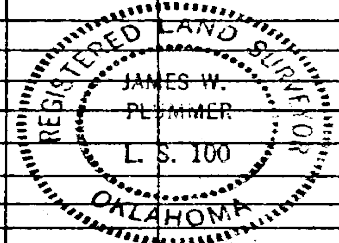
EUFULA LAKE, OKLAHOMA

Performed Under Contract Number DACW 56-77-C-0103

SEC. 10, T 6 N, R 14 E PITTSBURG COUNTY, OK.



Course No.	Distance	Bearing	Course No.	Distance	Bearing	Course No.	Distance	Bearing
1	680.87	N 75° 43' 01" W						
2	330.06	N 89° 44' 35" W						
3	368.61	N 63° 37' 44" W						
4	1320.15	N 89° 45' 06" W						
5	827.07	N 0° 01' 35" E						
6	827.08	N 0° 01' 35" E						
7	989.25	N 89° 50' 25" W						
8	989.25	N 89° 50' 25" W						



Field Book No. E-1296

Date: 1977

PLUMMER-BRUMMETT, INC. 527
CONSULTING ENGINEERS & SURVEYORS
1736 E. 59th Pl., Tulsa, Okla., 74105, Tel. (918) 939-2251

CERTIFICATE OF SURVEY
I HEREBY CERTIFY THAT THE ABOVE PLAT IS A TRUE AND CORRECT REPRESENTATION OF THE SURVEY MADE IN SECTION 10, T 6 N, R 14 E, PITTSBURG COUNTY, OKLAHOMA.

LEGEND

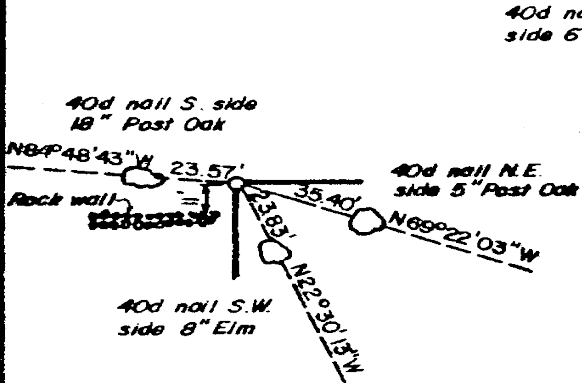
- A MONUMENT
- ORIGINAL CORNER
- 1" IRON PIN

Under the Supervision of
U.S. ARMY ENGINEER DISTRICT, TULSA
CORPS OF ENGINEERS

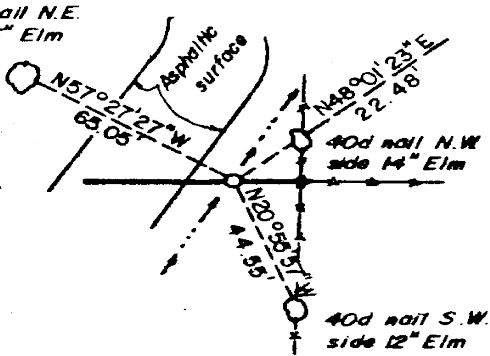
James W. Plummer
REGISTERED LAND SURVEYOR

EUFULA LAKE
AREA "B"
SECTION AND QUARTER SECTION CORNER
REFERENCES FOR
SEC. 10, T 6 N, R 14 E, PITTSBURG COUNTY, OK.

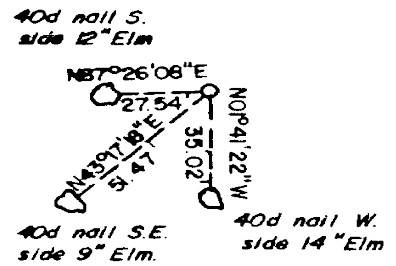
N.W. CORNER



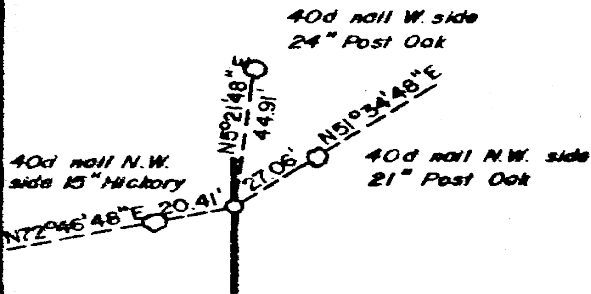
NORTH 1/4 COR.



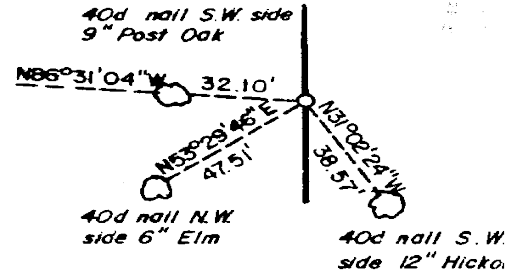
N.E. CORNER



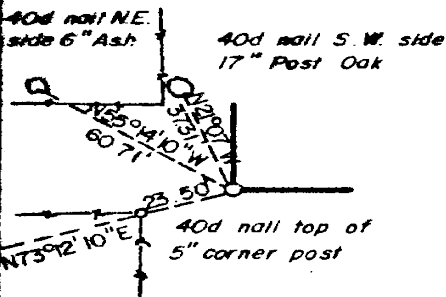
WEST 1/4 COR.



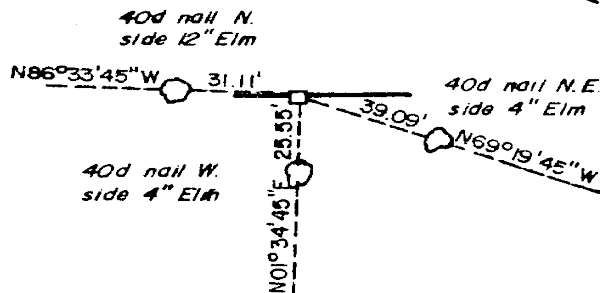
EAST 1/4 COR.



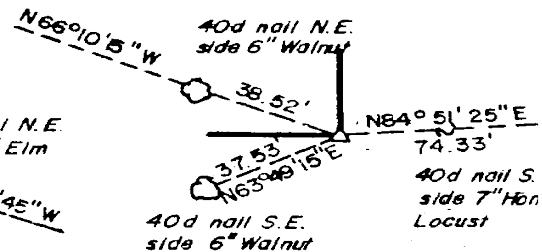
S.W. CORNER



SOUTH 1/4 COR.



S.E. CORNER



SCALE: 1" = 50'

LEGEND

- A MONUMENT
- B ORIGINAL CORNER
- O 1" IRON PIN

PLUMMER-BRUMMETT, INC.
CONSULTING ENGINEERS & SURVEYORS
1736 E. 59th Pl., Tulsa, Okla., 74105, Tel. (918) 939-2225

Under the Supervision of
U.S. ARMY ENGINEER DISTRICT, TULSA
CORPS OF ENGINEERS

