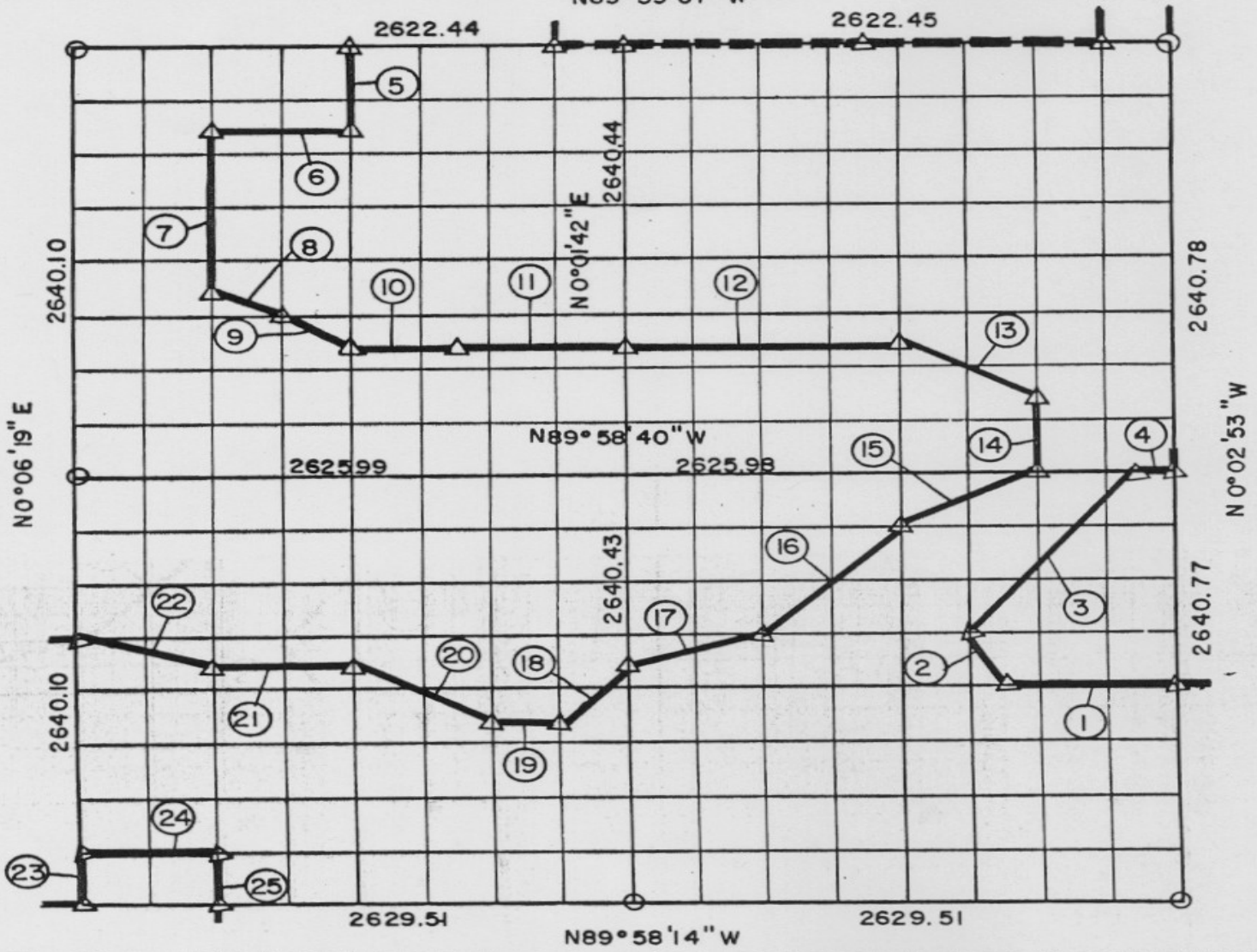


PARTIAL BOUNDARY SURVEYS
AREA "B"

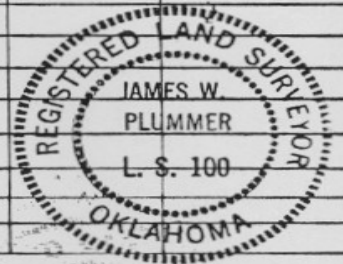
EUFULA LAKE, OKLAHOMA

Performed Under Contract Number DACW 56-77-C-0103

SEC. 11, T 6 N, R 14 E PITTSBURG COUNTY, OK.
N89°59'07"W



Course No.	Distance	Bearing	Course No.	Distance	Bearing	Course No.	Distance	Bearing
1	821.17	N89°58'27"W	15	734.64	N63°19'24"E			
2	368.81	N26°27'54"W	16	930.97	N44°51'48"E			
3	1285.62	N39°38'49"E	17	677.25	N75°55'15"E			
4	164.12	N89°58'45"W	18	465.68	N44°53'28"E			
5	495.05	N0°03'57"E	19	328.49	N89°58'26"W			
6	655.79	N89°59'00"W	20	735.02	N63°17'35"W			
7	990.07	N0°05'07"E	21	656.88	N89°58'29"W			
8	367.07	N63°16'03"W	22	677.07	N75°52'11"W			
9	367.12	N63°16'10"W	23	330.01	N0°06'19"E			
10	492.16	N89°58'49"W	24	657.27	N89°58'16"W			
11	820.28	N89°58'49"W	25	330.02	N0°05'13"E			
12	1312.45	N89°58'48"W						
13	734.81	N63°17'15"W						
14	495.13	N0°01'44"W						



Field Book No. E-1297

Date: 1977

PLUMMER-BRUMMETT, INC. 528
CONSULTING ENGINEERS & SURVEYORS
1736 E. 59th Pl., Tulsa, Okla., 74105, Tel. (918) 939-2251

CERTIFICATE OF SURVEY
I HEREBY CERTIFY THAT THE ABOVE PLAT IS A TRUE AND CORRECT REPRESENTATION OF THE SURVEY MADE IN SECTION 11, T 6 N, R 14 E PITTSBURG COUNTY, OKLAHOMA.

LEGEND

- ▲ MONUMENT
- ORIGINAL CORNER
- 1" IRON PIN

Under the Supervision of

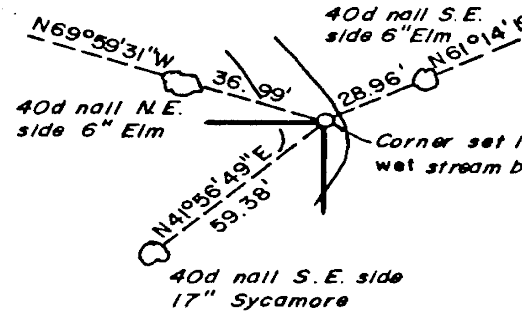
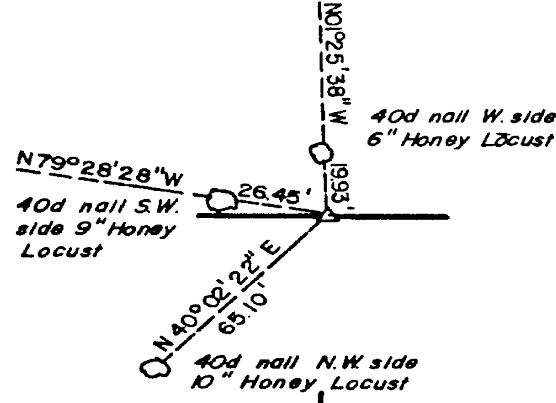
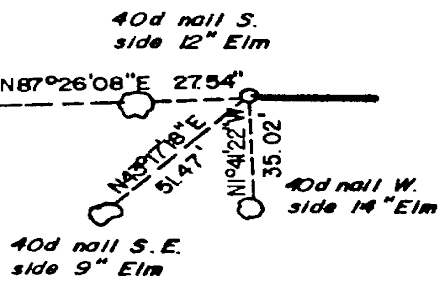
U.S. ARMY ENGINEER DISTRICT, TULSA
CORPS OF ENGINEERS

EUFAULA LAKE
 AREA "B"
 SECTION AND QUARTER SECTION CORNER
 REFERENCES FOR
 SEC. II , T 6 N, R 14 E, PITTSBURG COUNTY, OK.

N.W. CORNER

NORTH 1/4 COR.

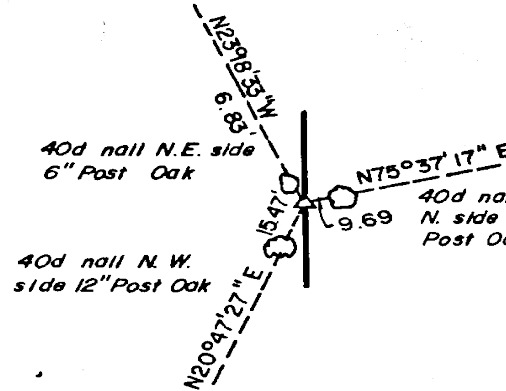
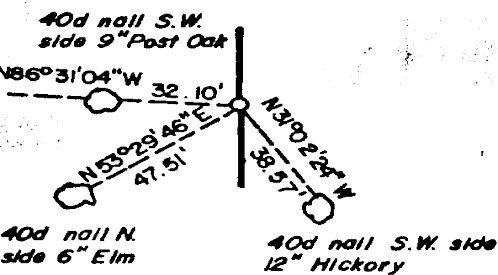
N.E. CORNER



WEST 1/4 COR.

SCALE: 1" = 50'

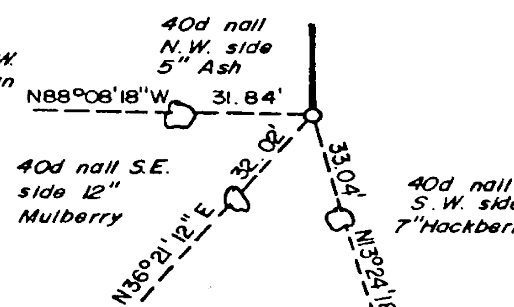
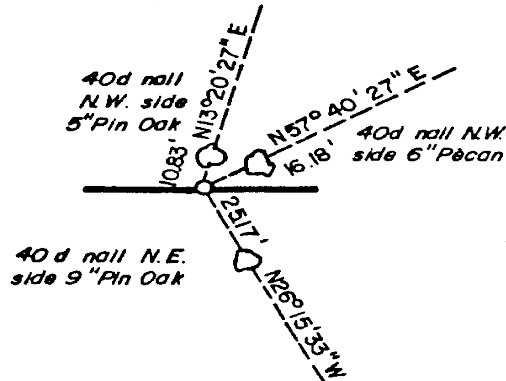
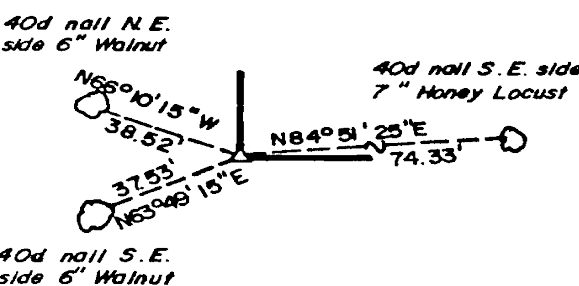
EAST 1/4 COR.



S.W. CORNER

SOUTH 1/4 COR.

S.E. CORNER



LEGEND

- ▲ MONUMENT
- ORIGINAL CORNER
- 1" IRON PIN

PLUMMER-BRUMMETT, INC.
 CONSULTING ENGINEERS & SURVEYORS
 1736 E 59th Pl., Tulsa, Okla., 74105. Tel. (918) 939-2251

Under the Supervision of
U.S. ARMY ENGINEER DISTRICT, TULSA
CORPS OF ENGINEERS

