

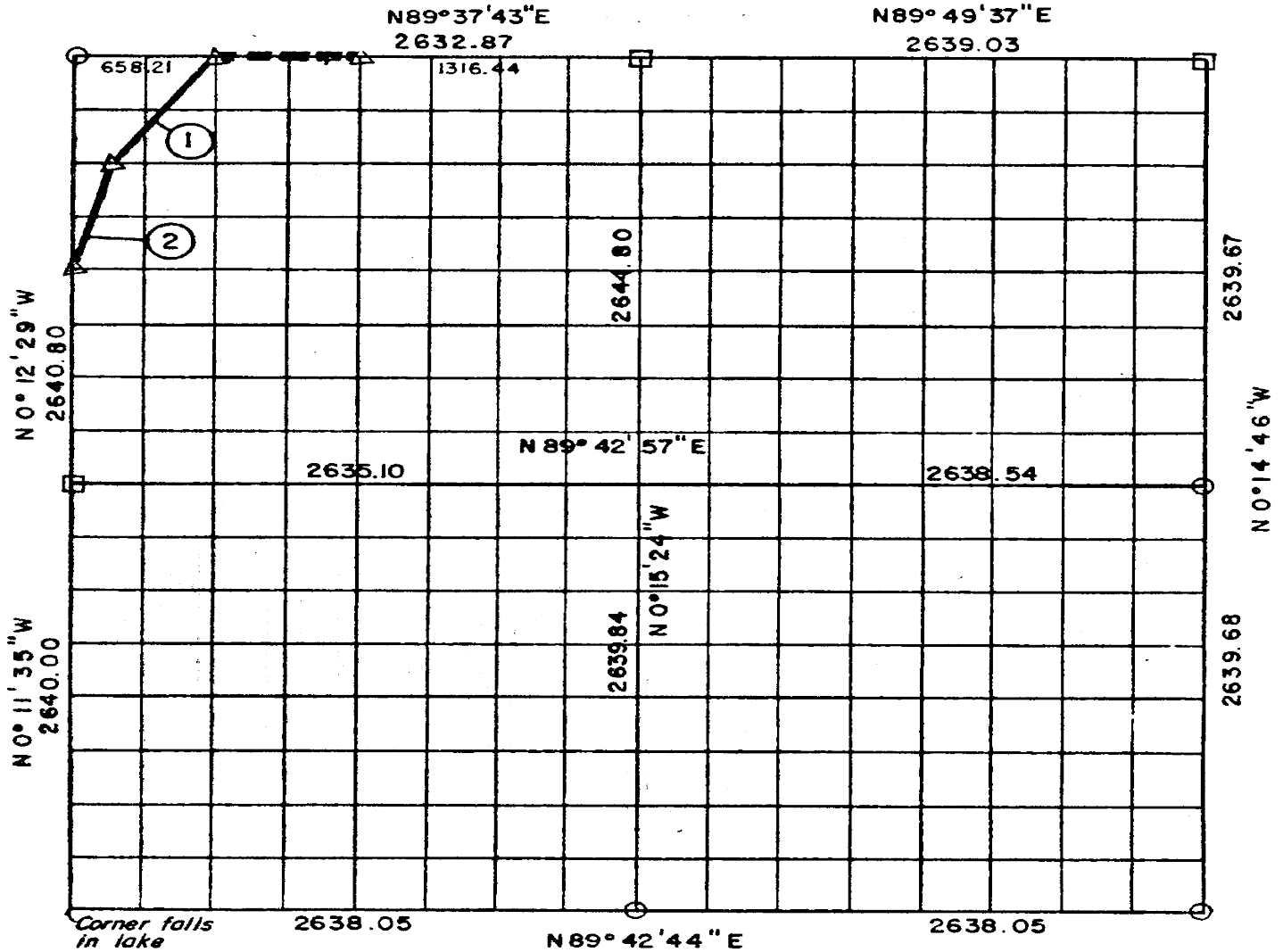


**PARTIAL BOUNDARY SURVEYS
AREA "B"**

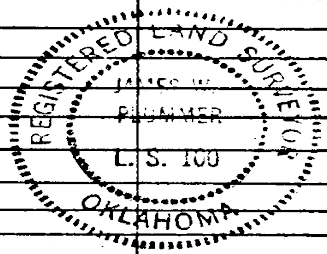
EUFAULA LAKE, OKLAHOMA

Performed Under Contract Number DACW 56-77-C-0103

SEC. 13, T 6 N, R 14 E PITTSBURG COUNTY, OK.



Course No.	Distance	Bearing	Course No.	Distance	Bearing	Course No.	Distance	Bearing
1	825.50	N36°30'53"E						
2	680.80	N13°46'59"E						



Field Book No. E-1299

Date: 1977

PLUMMER - BRUMMETT, INC. 547
CONSULTING ENGINEERS & SURVEYORS
1736 E. 59th Pl., Tulsa, Okla., 74105, Tel. (918) 939-2251

CERTIFICATE OF SURVEY
I HEREBY CERTIFY THAT THE ABOVE PLAT IS A TRUE AND CORRECT REPRESENTATION OF THE SURVEY MADE IN SECTION 13, T 6 N, R 14 E, PITTSBURG COUNTY, OKLAHOMA.

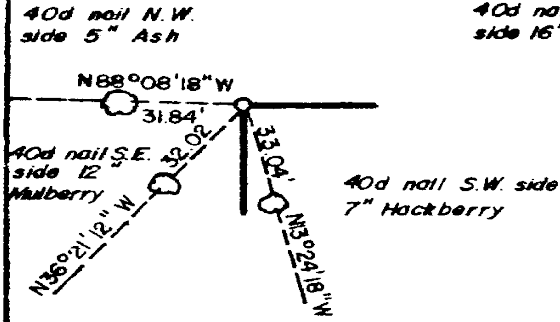
- LEGEND**
- ▲ MONUMENT
 - ORIGINAL CORNER
 - 1" IRON PIN

Under the Supervision of
**U.S. ARMY ENGINEER DISTRICT, TULSA
CORPS OF ENGINEERS**

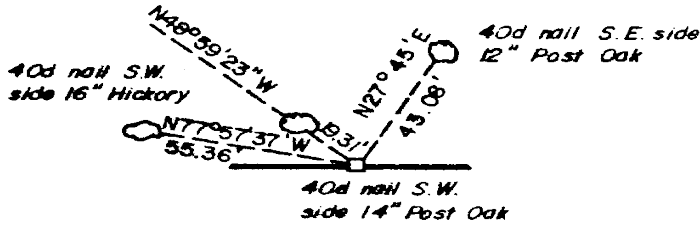
REGISTERED LAND SURVEYOR

EUFULA LAKE
AREA "B"
SECTION AND QUARTER SECTION CORNER
REFERENCES FOR
SEC. 13 , T 6 N, R 14 E, PITTSBURG COUNTY, OK.

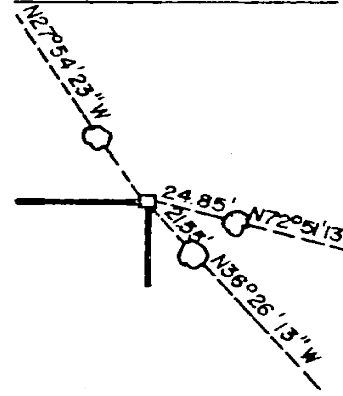
N.W. CORNER



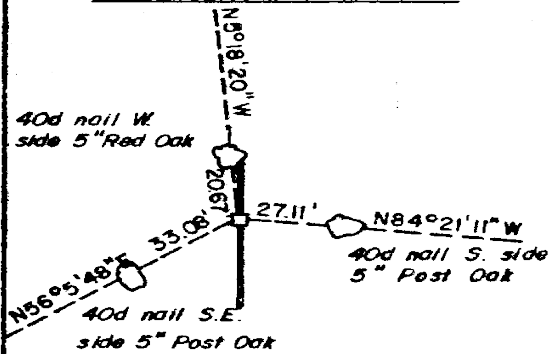
NORTH 1/4 COR.



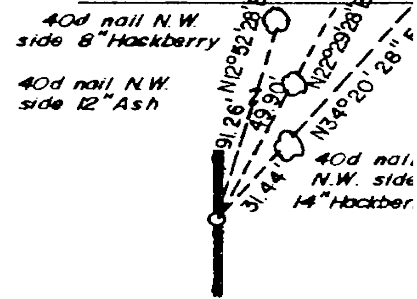
N.E. CORNER



WEST 1/4 COR.



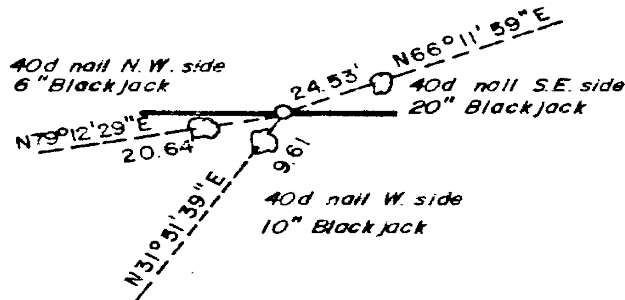
EAST 1/4 COR.



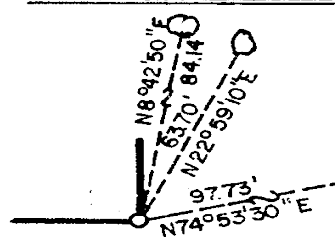
S.W. CORNER

CORNER FALLS IN LAKE TALAWANDA * 2

SOUTH 1/4 COR.



S.E. CORNER



LEGEND

- A MONUMENT
- O ORIGINAL CORNER
- Q 1" IRON PIN

PLUMMER-BRUMMETT, INC.
CONSULTING ENGINEERS & SURVEYORS
1736 E. 59th Pl, Tulsa, Okla., 74105, Tel. (918) 939-2221

Under the Supervision of
U.S. ARMY ENGINEER DISTRICT, TULSA
CORPS OF ENGINEERS

REGISTERED LAND SURVEYOR
FIELD BOOK NO. E-1299
JAMES W. PLUMMER
DATE 1977
L. S. 100
REGISTERED LAND SURVEYOR