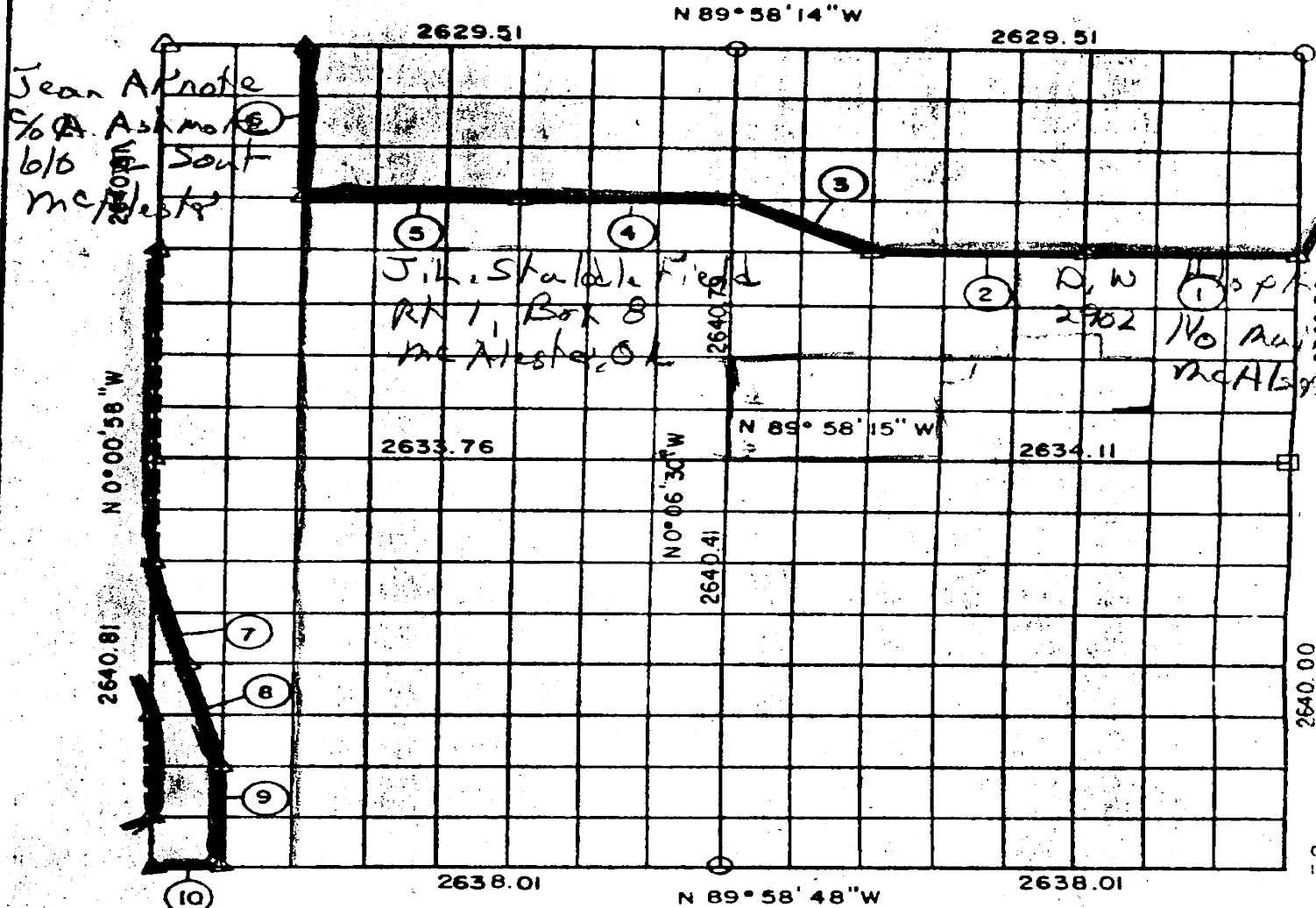


PARTIAL BOUNDARY SURVEYS  
AREA "B"

EUFAULA LAKE, OKLAHOMA  
Performed Under Contract Number DACW 56-77-C-0103

SEC. 14, T 6 N, R 14 E PITTSBURG COUNTY, OK.



Course No.	Distance	Bearing	Course No.	Distance	Bearing	Course No.	Distance	Bearing
1	986.93	N89°58'16"W						
2	986.93	N89°58'16"W						
3	736.83	N63°21'20"W						
4	986.66	N89°58'15"W						
5	986.66	N89°58'15"W						
6	990.31	N0°02'22"W						
7	680.57	N14°01'48"W						
8	680.57	N14°01'48"W						
9	660.19	N0°01'40"W						
10	329.75	N89°58'48"W						

Field Book No. E-1300

Date: 1977

PLUMMER - BRUMMETT, INC. 546  
CONSULTING ENGINEERS & SURVEYORS  
1736 E. 53th Pl., Tulsa, Okla., 74105, Tel. (918) 939-2231

CERTIFICATE OF  
I HEREBY CERTIFY THAT  
THE ABOVE PLAT IS A TRUE  
CORRECT REPRESENTATION  
OF THE SURVEY MADE IN  
SEC. 14, T. 6 N., R. 14 E.,  
PITTSBURG COUNTY, OKLAHOMA.

- LEGEND**
- A MONUMENT
  - O ORIGINAL CORNER
  - o 1" IRON PIN

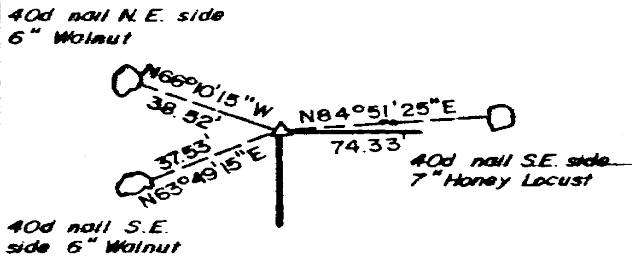
Under the Supervision of

U.S. ARMY ENGINEER DISTRICT, TULSA  
CORPS OF ENGINEERS

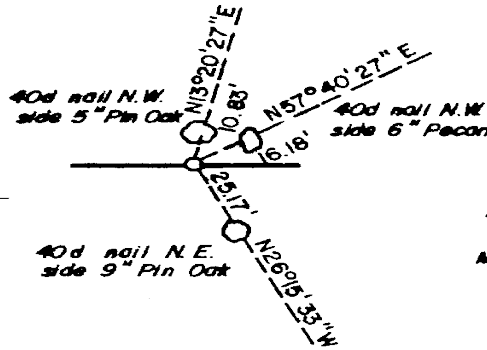
REGISTERED LAND SURVEYOR

EUFULA LAKE  
 AREA "B"  
 SECTION AND QUARTER SECTION CORNER  
 REFERENCES FOR  
 SEC. 14, T 6 N, R 14 E, PITTSBURG COUNTY, OK.

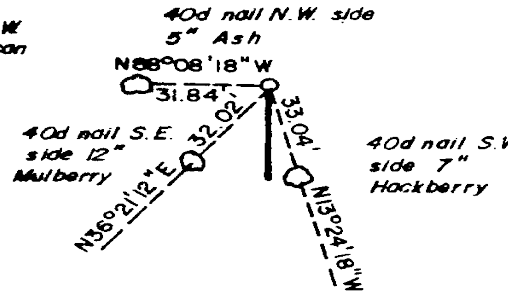
N.W. CORNER



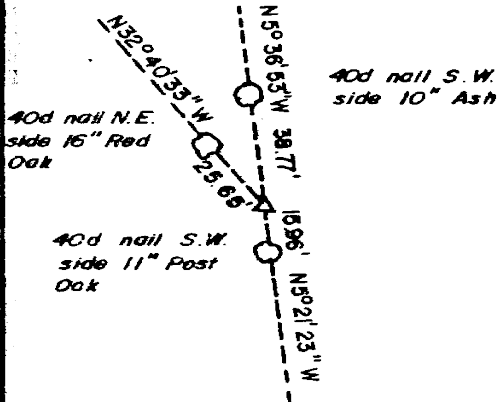
NORTH 1/4 COR.



N.E. CORNER

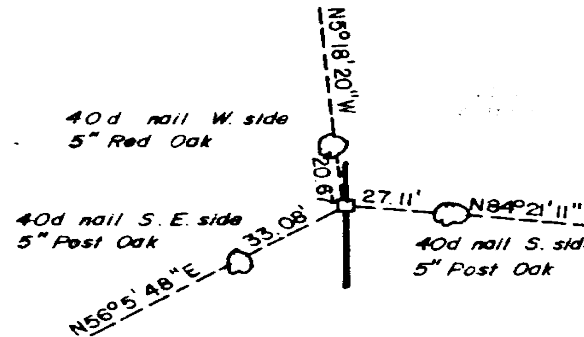


WEST 1/4 COR.

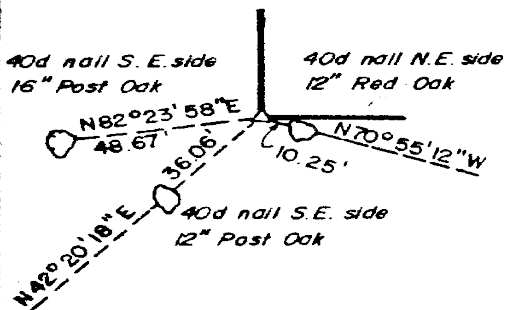


SCALE: 1" = 50'

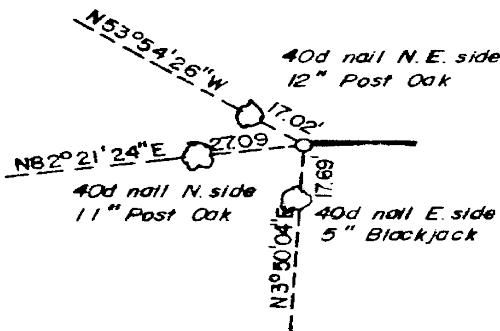
EAST 1/4 COR.



S.W. CORNER

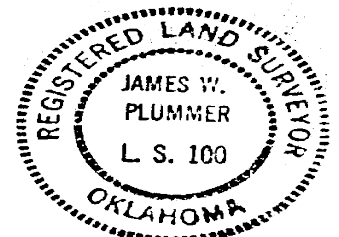


SOUTH 1/4 COR.



S.E. CORNER

CORNER FALLS IN  
 LAKE TALAWANDA # 2



FIELD BOOK NO. E-1300

DATE: 1977

*James W. Plummer*  
 REGISTERED LAND SURVEYOR

**PLUMMER-BRUMMETT, INC.**  
 CONSULTING ENGINEERS & SURVEYORS  
 1736 E. 59th Pl., Tulsa, Okla., 74105, Tel. (918) 939-2251

Under the Supervision of  
**U.S. ARMY ENGINEER DISTRICT, TULSA**  
**CORPS OF ENGINEERS**

LEGEND

- ▲ MONUMENT
- ORIGINAL CORNER
- 1" IRON PIN