

PARTIAL BOUNDARY SURVEYS  
AREA "B"

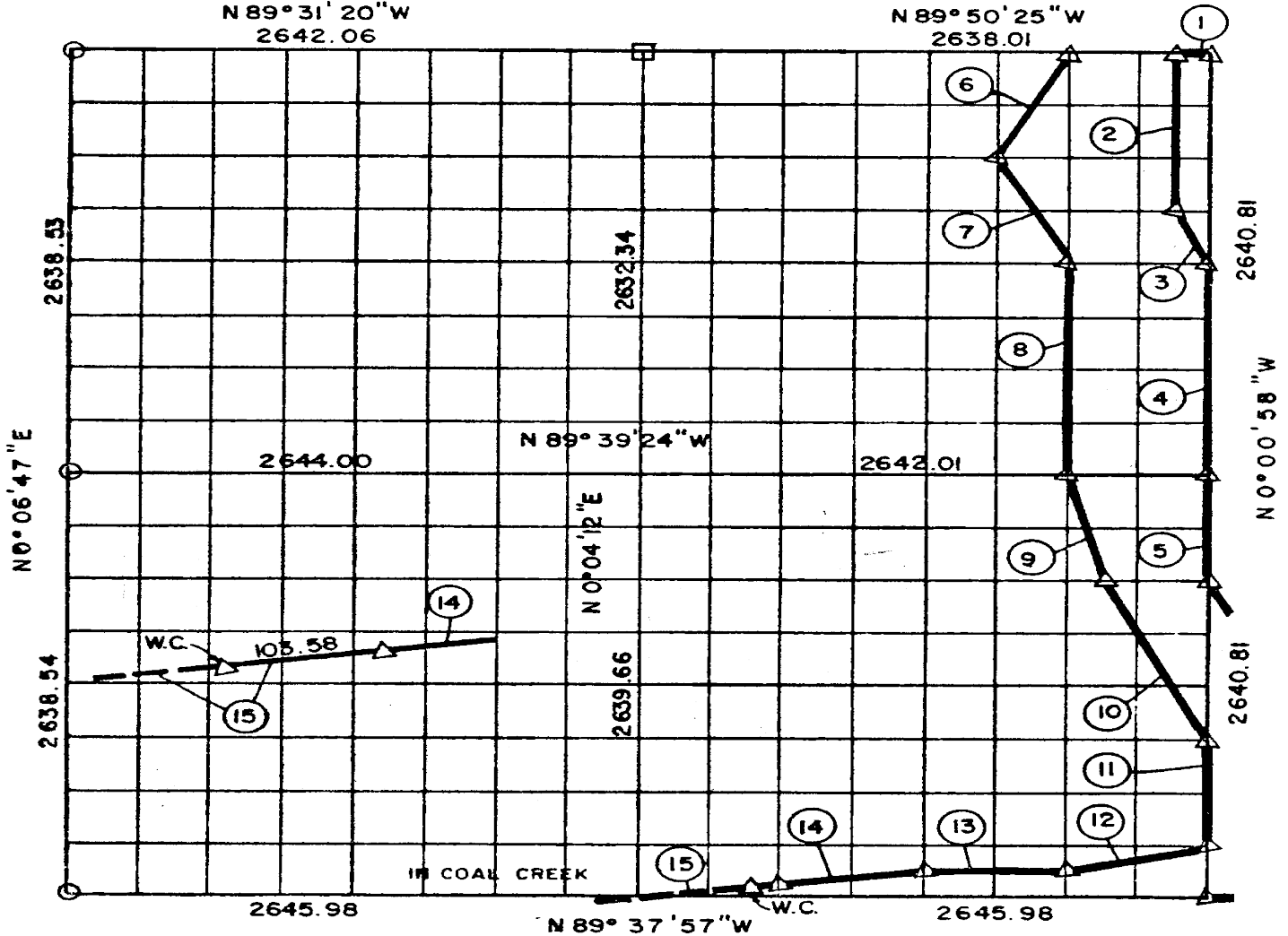
EUFAULA LAKE, OKLAHOMA

Performed Under Contract Number DACW 56-77-C-0103

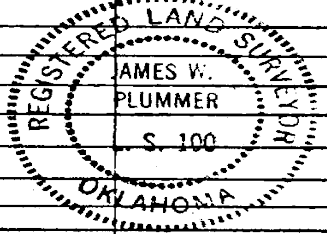
SEC. 15, T 6 N, R 14 E PITTSBURG COUNTY, OK.

N 89° 31' 20" W  
2642.06

N 89° 50' 25" W  
2638.01



Course No.	Distance	Bearing	Course No.	Distance	Bearing	Course No.	Distance	Bearing
1	164.88	N89°50'25"W	15	666.14	N83°15'10"E			
2	990.10	N0°00'40"W						
3	369.66	N26°31'14"W						
4	1320.41	N0°00'58"W						
5	660.20	N0°00'58"W						
6	736.52	N26°36'46"E						
7	738.58	N26°31'21"W						
8	1319.35	N0°00'20"E						
9	681.45	N14°01'25"W						
10	1110.20	N26°31'34"W						
11	660.20	N0°00'58"W						
12	680.64	N76°19'59"E						
13	661.43	N89°38'01"W						
14	666.14	N83°15'10"E						



Field Book No. E-1301 Date: 1977

PLUMMER-BRUMMETT, INC. 545  
CONSULTING ENGINEERS & SURVEYORS  
1736 E. 59th Pl., Tulsa, Okla., 74105, Tel. (918) 939-2251

CERTIFICATE OF SURVEY  
I HEREBY CERTIFY THAT THE ABOVE PLAT IS A TRUE AND CORRECT REPRESENTATION OF THE SURVEY MADE IN SECTION 15, T 6 N, R 14 E, PITTSBURG COUNTY, OKLAHOMA.

LEGEND

- ▲ MONUMENT
- ORIGINAL CORNER
- 1" IRON PIN

Under the Supervision of  
U.S. ARMY ENGINEER DISTRICT, TULSA  
CORPS OF ENGINEERS

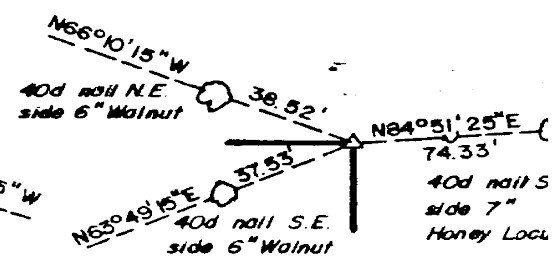
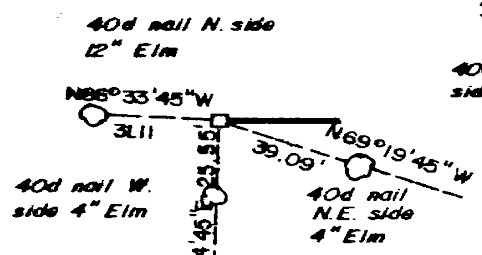
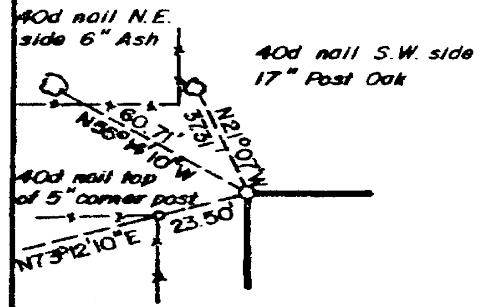
*Ames W. Plummer*  
REGISTERED LAND SURVEYOR

**EUFULA LAKE  
AREA "B"**  
**SECTION AND QUARTER SECTION CORNER  
REFERENCES FOR  
SEC. 15, T 6 N, R 14 E, PITTSBURG COUNTY, OK.**

**N.W. CORNER**

**NORTH 1/4 COR.**

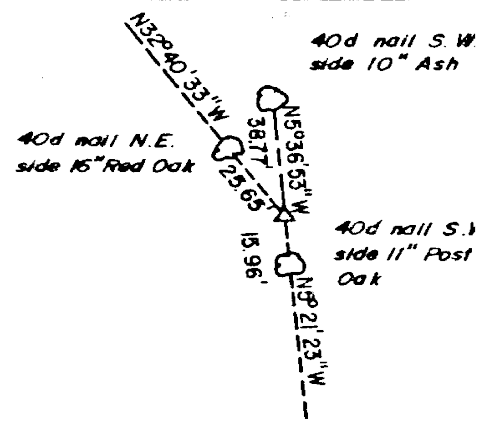
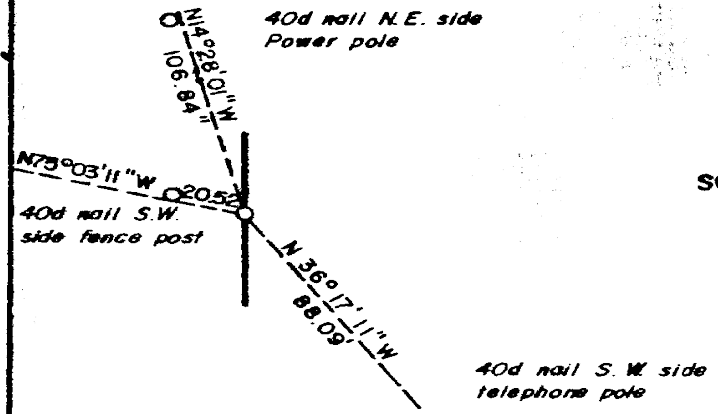
**N.E. CORNER**



**WEST 1/4 COR.**

SCALE: 1" = 50'

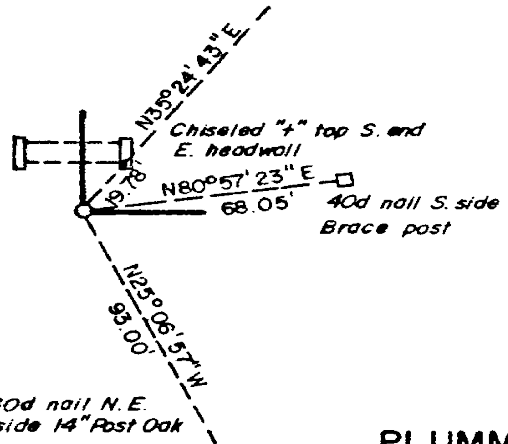
**EAST 1/4 COR.**



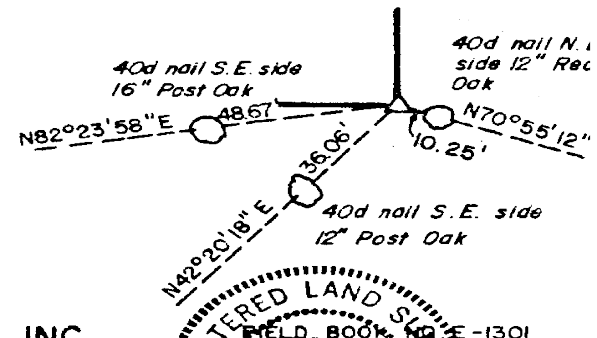
**S.W. CORNER**

**SOUTH 1/4 COR.**

**S.E. CORNER**

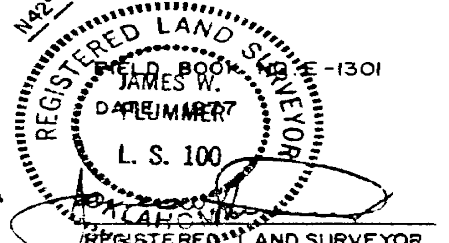


CORNER FALLS IN COAL CREEK



- LEGEND**  
 A MONUMENT  
 B ORIGINAL CORNER  
 C 1" IRON PIN

**PLUMMER - BRUMMETT, INC.**  
**CONSULTING ENGINEERS & SURVEYORS**  
 1736 E. 59th Pl., Tulsa, Okla., 74105, Tel. (918) 939-2251



Under the Supervision of  
**U.S. ARMY ENGINEER DISTRICT, TULSA**  
**CORPS OF ENGINEERS**