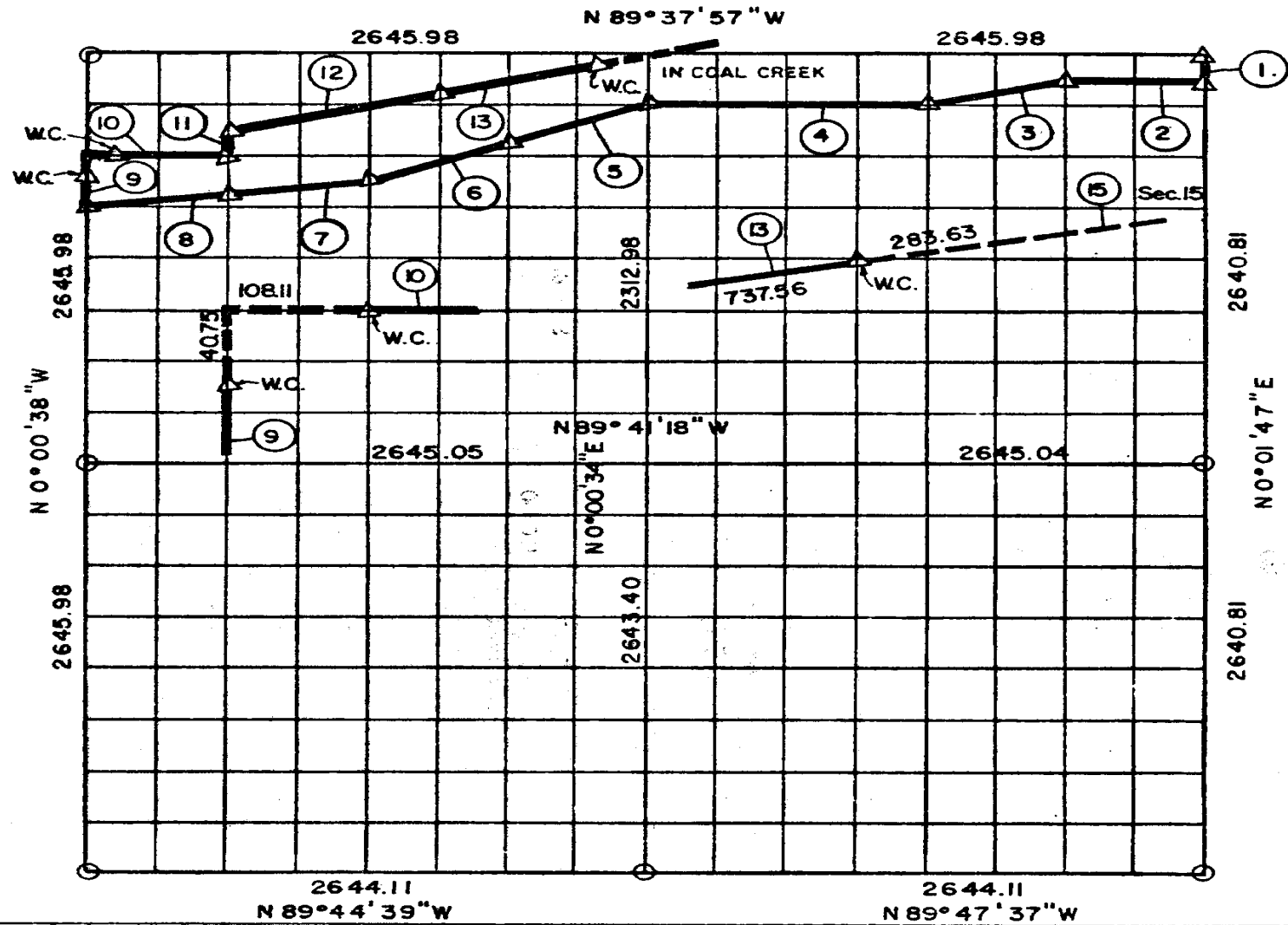


**PARTIAL BOUNDARY SURVEYS
AREA "B"**

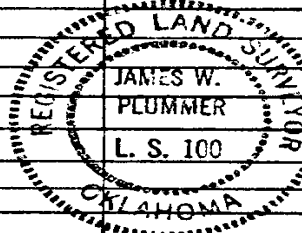
EUFULA LAKE, OKLAHOMA

Performed Under Contract Number DACW 56-77-C-0103

SEC. 22, T 6 N, R 14 E PITTSBURG COUNTY, OK.



Course No.	Distance	Bearing	Course No.	Distance	Bearing	Course No.	Distance	Bearing
1	165.05	N 0° 01' 47" E						
2	661.48	N 89° 38' 07" W						
3	680.81	N 76° 19' 37" E						
4	1322.94	N 89° 38' 21" W						
5	704.94	N 69° 46' 06" E						
6	704.94	N 69° 46' 06" E						
7	666.06	N 83° 13' 08" E						
8	666.06	N 83° 13' 08" E						
9	330.75	N 0° 00' 38" W						
10	661.44	N 89° 38' 48" W						
11	165.33	N 0° 00' 19" W						
12	1021.19	N 76° 18' 46" E						
13	1021.19	N 76° 18' 46" E						



Field Book No. E-1302

Date: 1977

PLUMMER-BRUMMETT, INC.
CONSULTING ENGINEERS & SURVEYORS
1736 E. 59th Pl., Tulsa, Okla., 74105, Tel. (918) 939-2251

LEGEND

- ▲ MONUMENT
- ORIGINAL CORNER
- 1" IRON PIN

Under the Supervision of
**U.S. ARMY ENGINEER DISTRICT, TULSA
CORPS OF ENGINEERS**

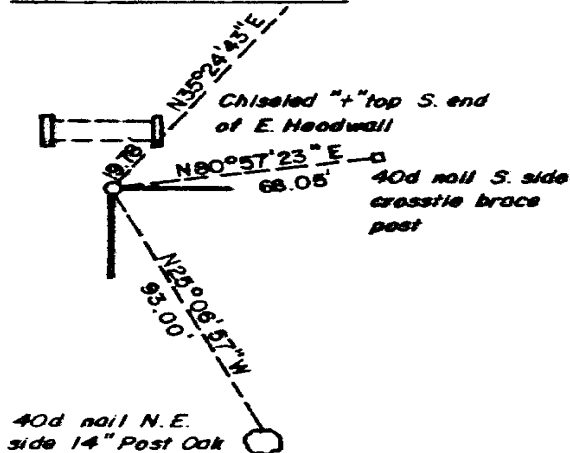
CERTIFICATE OF SURVEY

I HEREBY CERTIFY THAT THE ABOVE PLAT IS A TRUE AND CORRECT REPRESENTATION OF THE SURVEY MADE IN SECTION 22, T 6 N, R 14 E, PITTSBURG COUNTY, OKLAHOMA.

James W. Plummer
REGISTERED LAND SURVEYOR

EUFULA LAKE
 AREA "B"
 SECTION AND QUARTER SECTION CORNER
 REFERENCES FOR
 SEC. 22, T 6 N, R 14 E, PITTSBURG COUNTY, OK.

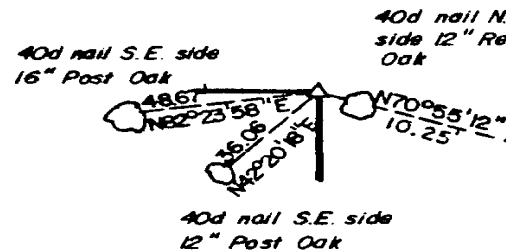
N.W. CORNER



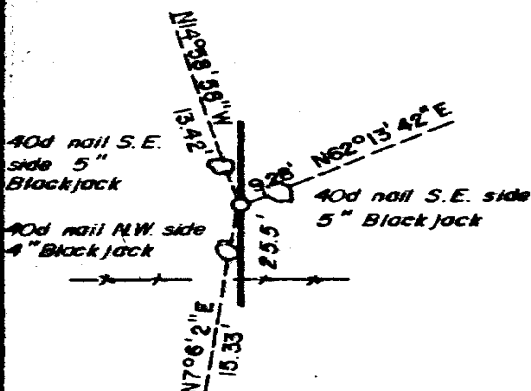
NORTH 1/4 COR.

CORNER FALLS IN
 COAL CREEK

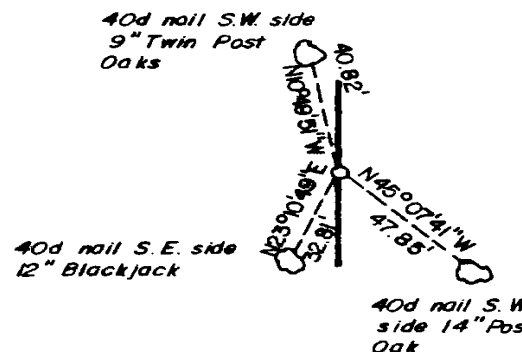
N.E. CORNER



WEST 1/4 COR.

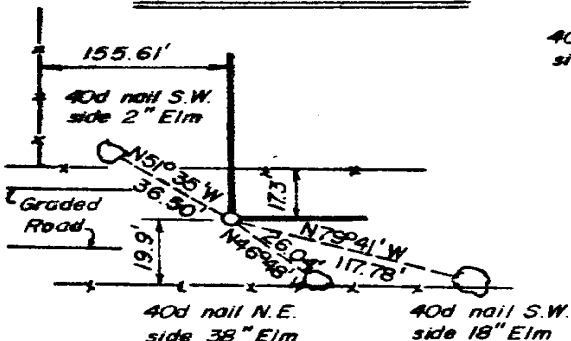


EAST 1/4 COR.

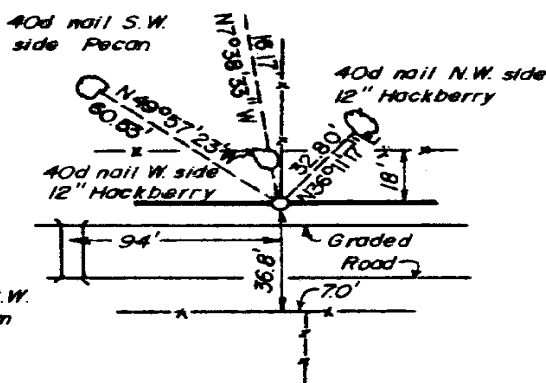


SCALE: 1" = 50'

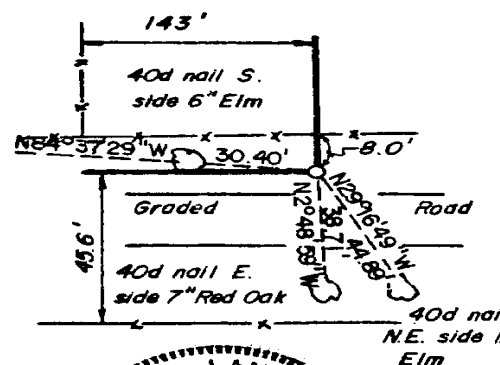
S.W. CORNER



SOUTH 1/4 COR.



S.E. CORNER



LEGEND

- A MONUMENT
- D ORIGINAL CORNER
- O 1" IRON PIN

PLUMMER-BRUMMETT, INC.
 CONSULTING ENGINEERS & SURVEYORS
 1736 E 59th Pl, Tulsa, Okla., 74105, Tel. (918) 939-2251

Under the Supervision of
 U.S. ARMY ENGINEER DISTRICT, TULSA
 CORPS OF ENGINEERS

