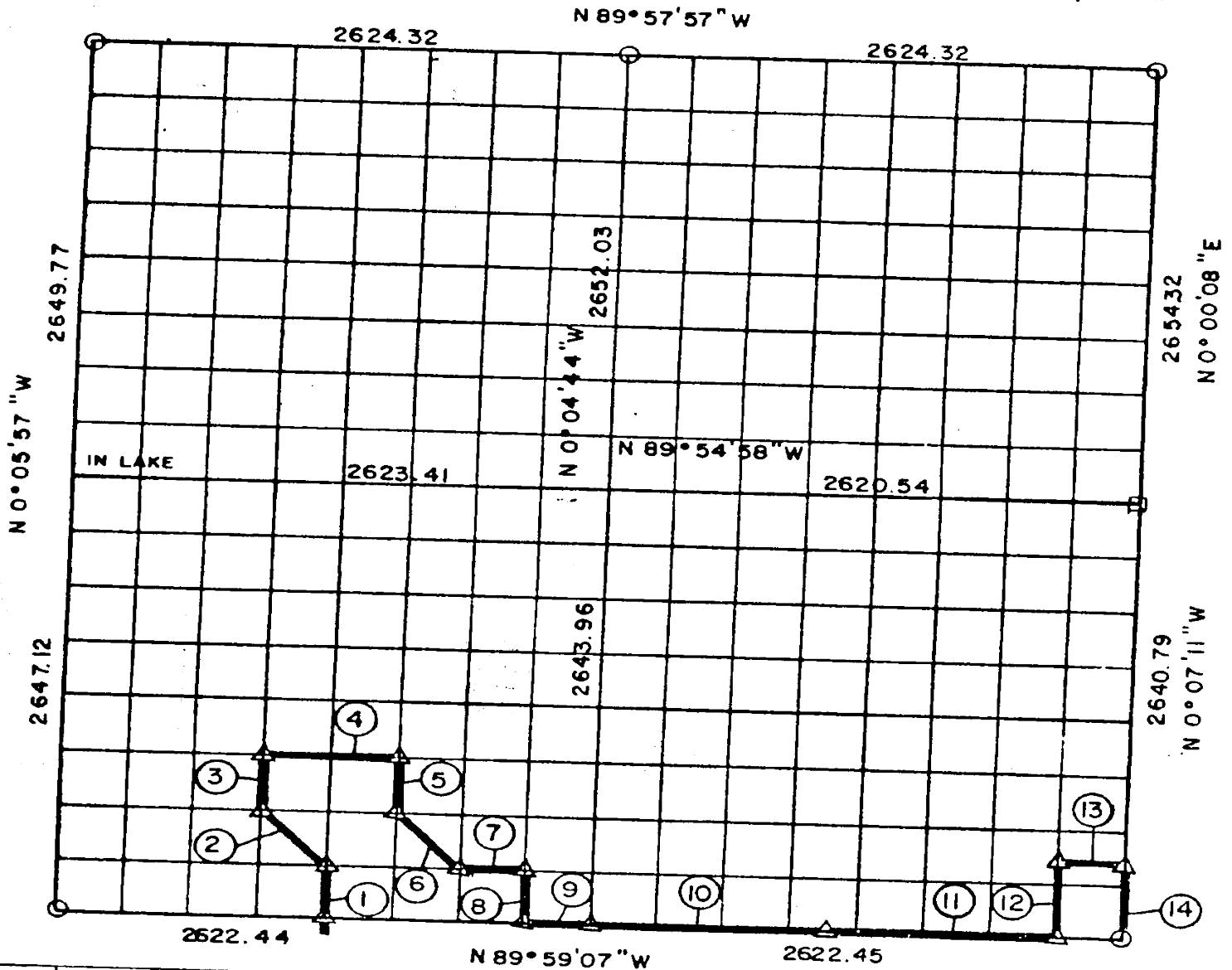


# PARTIAL BOUNDARY SURVEYS AREA "B"

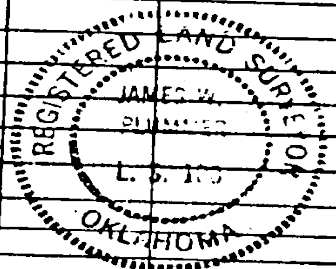
EUFAULA LAKE, OKLAHOMA

Performed Under Contract Number DACW 56-77-C-0103

SEC. 2 , T 6 N, R 14 E PITTSBURG COUNTY, OK.

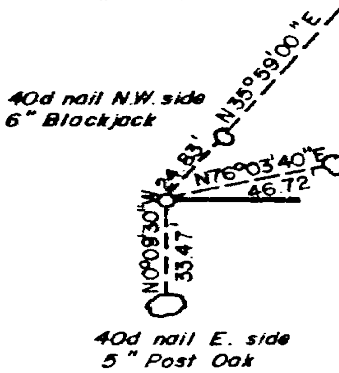


Course No.	Distance	Bearing	Course No.	Distance	Bearing	Course No.	Distance	Bearing
1	330.70	N 0° 05' 18" W						
2	466.14	N 44° 46' 48" W						
3	330.74	N 0° 05' 37" W						
4	655.71	N 89° 57' 35" W						
5	330.64	N 0° 05' 12" W						
6	466.04	N 44° 47' 10" W						
7	327.82	N 89° 58' 32" W						
8	330.55	N 0° 04' 53" W						
9	327.80	N 89° 59' 07" W						
10	1147.32	N 89° 59' 07" W						
11	1147.32	N 89° 59' 07" W						
12	495.23	N 0° 06' 48" W						
13	327.76	N 89° 58' 19" W						
14	495.15	N 0° 07' 11" W						

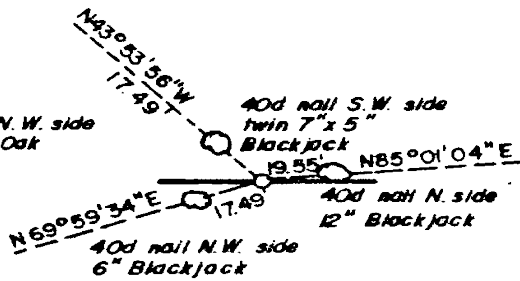


EUFULA LAKE  
AREA "B"  
SECTION AND QUARTER SECTION CORNER  
REFERENCES FOR  
SEC. 2 , T 6 N, R 14 E, PITTSBURG COUNTY, OK.

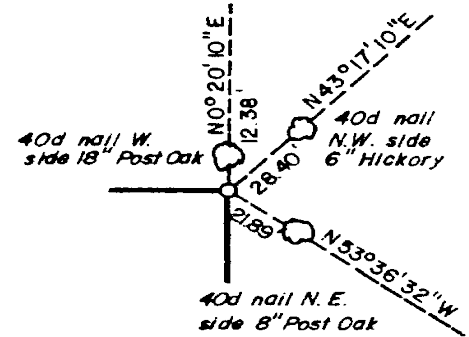
N.W. CORNER



NORTH 1/4 COR.



N.E. CORNER

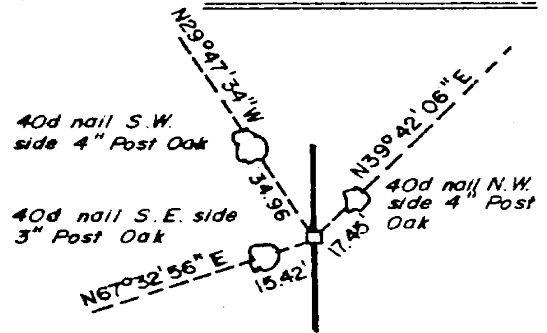


WEST 1/4 COR.

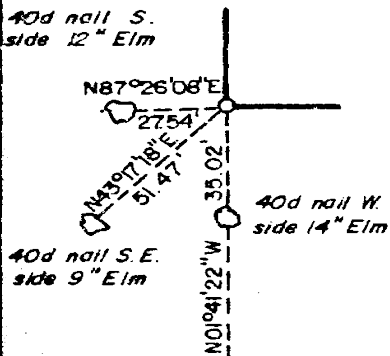
WEST 1/4 CORNER FALLS  
IN LAKE M<sup>c</sup> ALESTER

SCALE: 1" = 50'

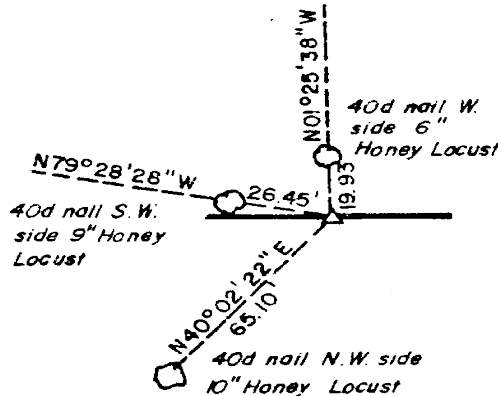
EAST 1/4 COR.



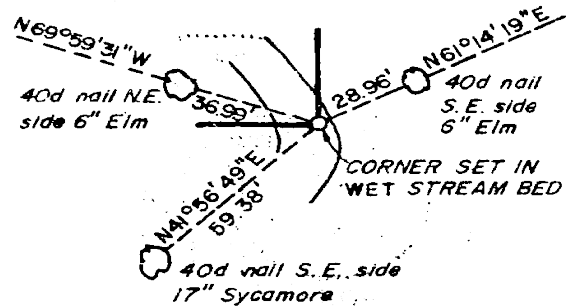
S.W. CORNER



SOUTH 1/4 COR.



S.E. CORNER



- LEGEND**
- A MONUMENT
  - ORIGINAL CORNER
  - IRON PIN

**PLUMMER-BRUMMETT, INC.**  
CONSULTING ENGINEERS & SURVEYORS  
1736 E. 59th Pl., Tulsa, Okla., 74105, Tel. (918) 939-2251

Under the Supervision of  
**U.S. ARMY ENGINEER DISTRICT, TULSA**  
CORPS OF ENGINEERS

FIELD BOOK NO. 285  
REGISTERED LAND SURVEYOR  
STANES W. PLUMMER  
1900