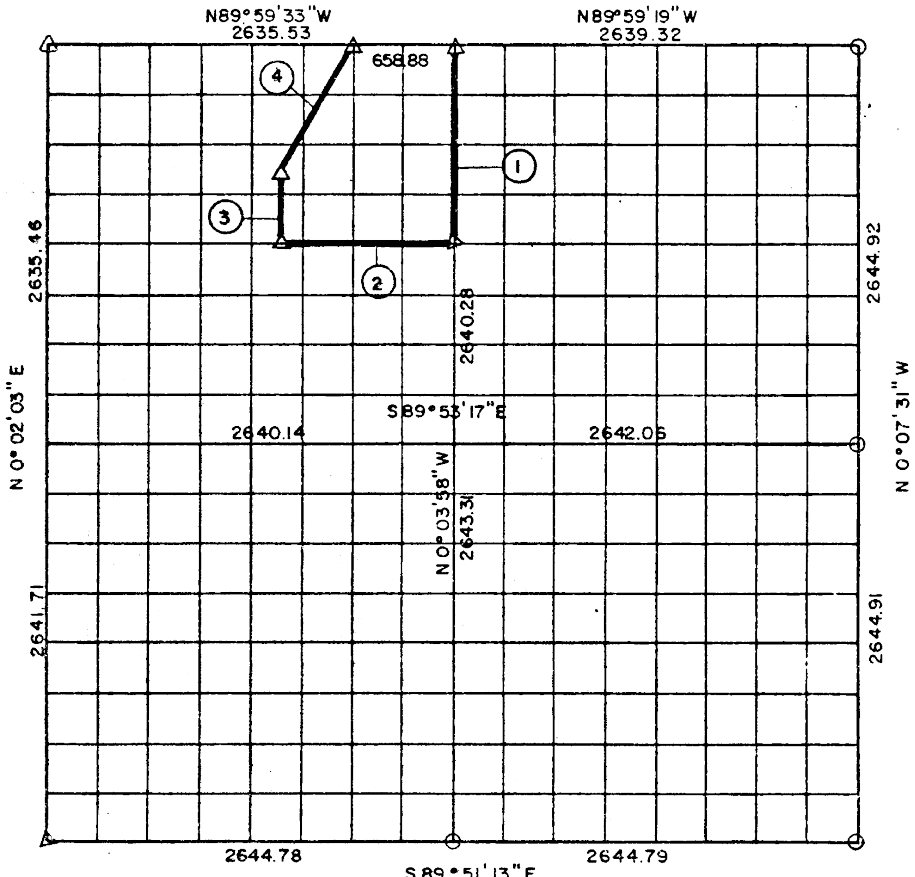


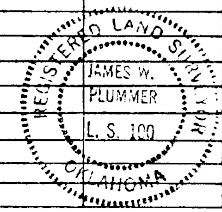


PARTIAL BOUNDARY SURVEYS  
AREA "B"

EUFAULA LAKE, OKLAHOMA  
Performed Under Contract Number DACW 56-77-C-0103  
SEC. 10, T 6 N, R 15 E PITTSBURG COUNTY, OK.



Course No.	Distance	Bearing	Course No.	Distance	Bearing	Course No.	Distance	Bearing
1	1320.14	N 0° 03' 58" W						
2	1154.05	S 89° 56' 25" E						
3	494.66	N 0° 01' 20" W						
4	960.97	N 30° 55' 29" E						



Field Book No. E-1290

Date: 1977

PLUMMER-BRUMMETT, INC. 533  
CONSULTING ENGINEERS & SURVEYORS  
1736 E. 59th Pl., Tulsa, Okla., 74105, Tel. (918) 939-2251

CERTIFICATE OF SURVEY  
I HEREBY CERTIFY THAT THE  
ABOVE PLAT IS A TRUE AND  
CORRECT REPRESENTATION OF  
THE SURVEY MADE IN SECTION  
10, T 6 N, R 15 E, PITTSBURG  
COUNTY, OKLAHOMA.

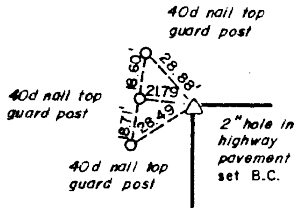
- LEGEND**
- ▲ MONUMENT
  - ORIGINAL CORNER
  - 1" IRON PIN

Under the Supervision of  
U.S. ARMY ENGINEER DISTRICT, TULSA  
CORPS OF ENGINEERS

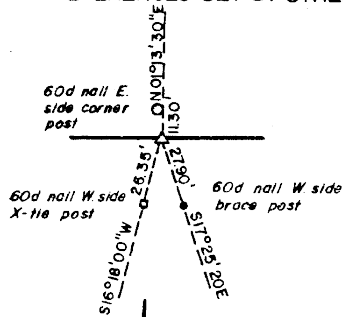
*James W. Plummer*  
REGISTERED LAND SURVEYOR

EUFAULA LAKE  
AREA "B"  
SECTION AND QUARTER SECTION CORNER  
REFERENCES FOR  
SEC. 10, T 6 N, R 15 E, PITTSBURG COUNTY, OK.

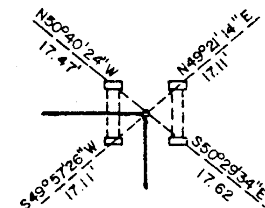
N.W. CORNER



NORTH 1/4 COR.  
REFERENCES SET BY OTHERS)



N.E. CORNER



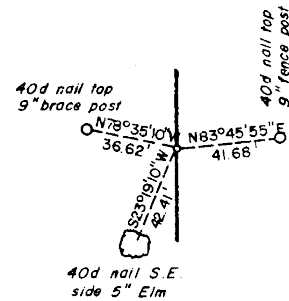
NOTE: All references are ch.  
"X" on conc. headwalls

WEST 1/4 COR.

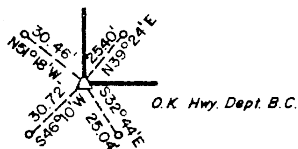
NOTE:  $\frac{1}{4}$  CORNER FALLS IN  
CONCRETE PAVEMENT  
OF U.S HIGHWAY 69  
CORNER NOT SET.

SCALE: 1" = 50'

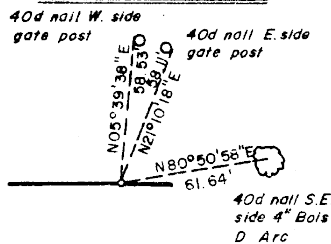
EAST 1/4 COR.



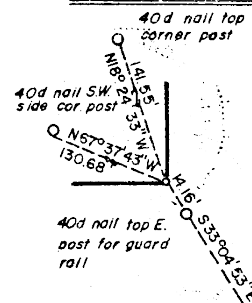
S.W. CORNER



SOUTH 1/4 COR.



S.E. CORNER



NOTE: All references are 40d nails in top  
of guard posts (by others)

- LEGEND**
- ▲ MONUMENT
  - ORIGINAL CORNER
  - 1" IRON PIN

**PLUMMER-BRUMMETT, INC.**  
CONSULTING ENGINEERS & SURVEYORS  
1736 E 59th Pl., Tulsa, Okla., 74105, Tel. (918) 939-2251

Under the Supervision of  
U.S. ARMY ENGINEER DISTRICT, TULSA  
CORPS OF ENGINEERS

