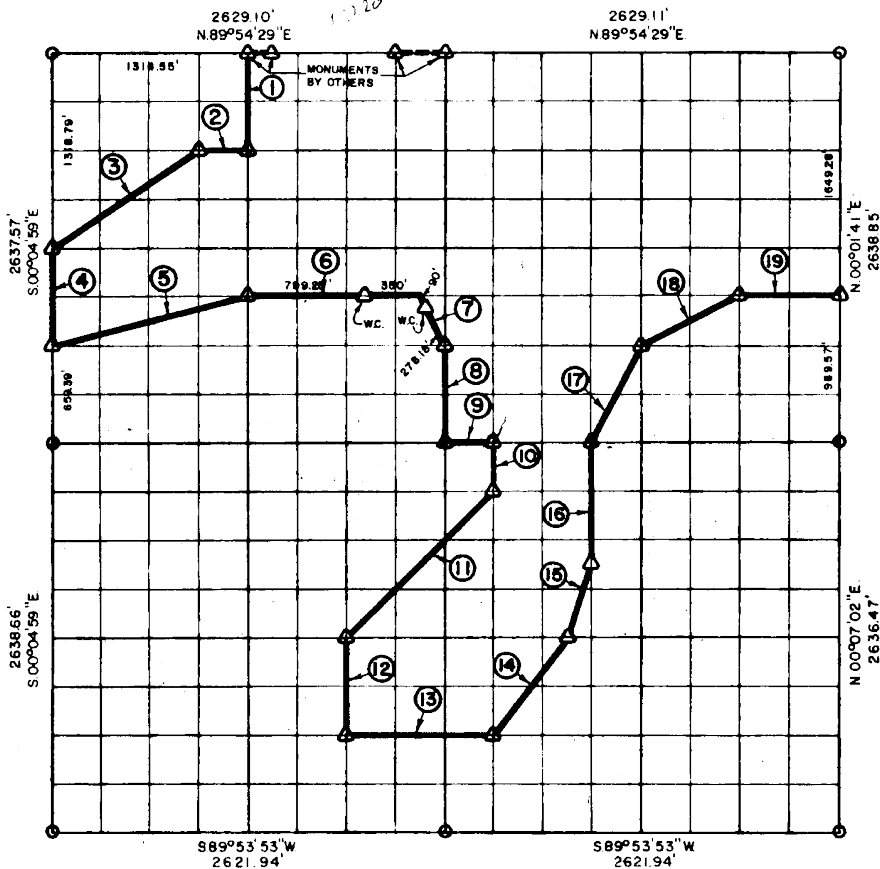


PARTIAL BOUNDARY SURVEYS
EUFAULA LAKE
OKLAHOMA

Performed Under Contract Number DACW 56-75-C-0126

SEC. 12, T. 6 N., R. 15 E., COUNTY PITTSBURG



Course No.	Distance	Bearing	Course No.	Distance	Bearing
1	659.47'	S.00°02'39\"E.	14	823.46'	N.36°42'42\"E.
2	328.52'	S.89°54'42\"W.	15	521.33'	N.18°22'52\"E.
3	1185.87'	S.56°07'44\"W.	16	824.11'	N.00°02'26\"E.
4	659.39'	S.00°04'59\"E.	17	737.34'	N.26°27'51\"E.
5	1354.18'	N.75°49'32\"E.	18	735.66'	N.63°16'50\"E.
6	1149.25'	N.89°55'00\"E.	19	657.04'	N.89°55'00\"E.
7	368.18'	S.26°29'14\"E.			
8	659.55'	S.00°00'19\"E.			
9	328.45'	N.89°55'19\"E.			
10	329.68'	S.00°00'36\"W.			
11	1396.38'	S.44°48'52\"W.			
12	659.46'	S.00°01'29\"E.			
13	983.63'	N.89°54'15\"E.			



CERTIFICATE OF SURVEY
I hereby Certify That The
Above Plat is a True and
Correct Representation of
The Survey Made in Section
12, T. 6 N., R. 15 E., PITTSBURG
COUNTY, OKLAHOMA
Frank P. Pierce
Registered Professional Engineer
Registered Land Surveyor

Field Book No. E-1205 Date 7-11-75
MAPCO ENGINEERING CORPORATION
Under The Supervision Of
U.S. ARMY ENGINEER DISTRICT, TULSA
CORPS OF ENGINEERS
SHEET 1 of 2

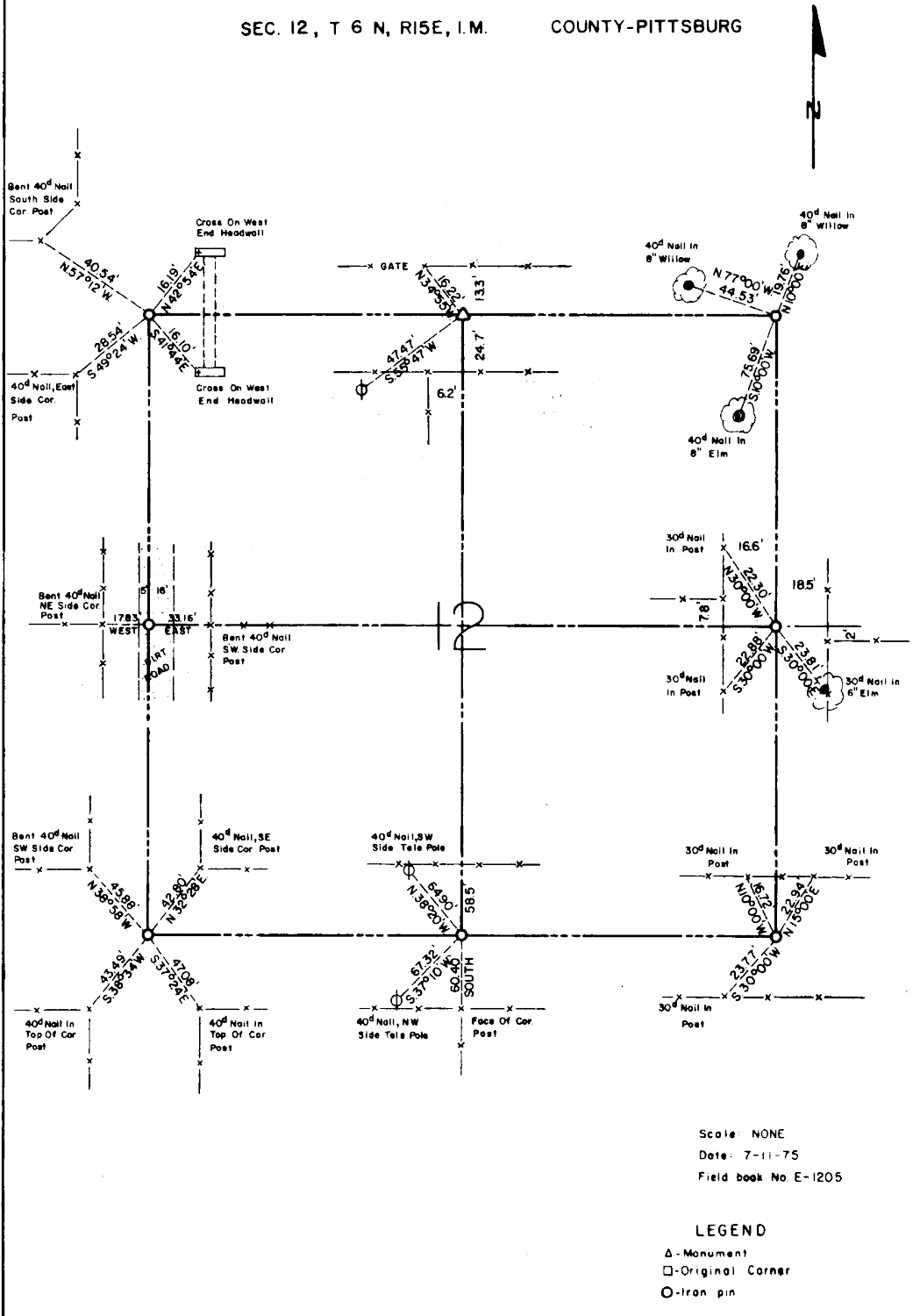
LEGEND
▲ MONUMENT
□ ORIGINAL CORNER
○ IRON PIN
WC WITNESS CORNER

535

EUFAULA LAKE OKLAHOMA

SECTION AND QUARTER SECTION CORNER
REFERENCES FOR

SEC. 12, T 6 N, R 15E, I.M. COUNTY-PITTSBURG



Scale: NONE
Date: 7-11-75
Field book No E-1205

LEGEND
 Δ - Monument
 □ - Original Corner
 ○ - Iron pin