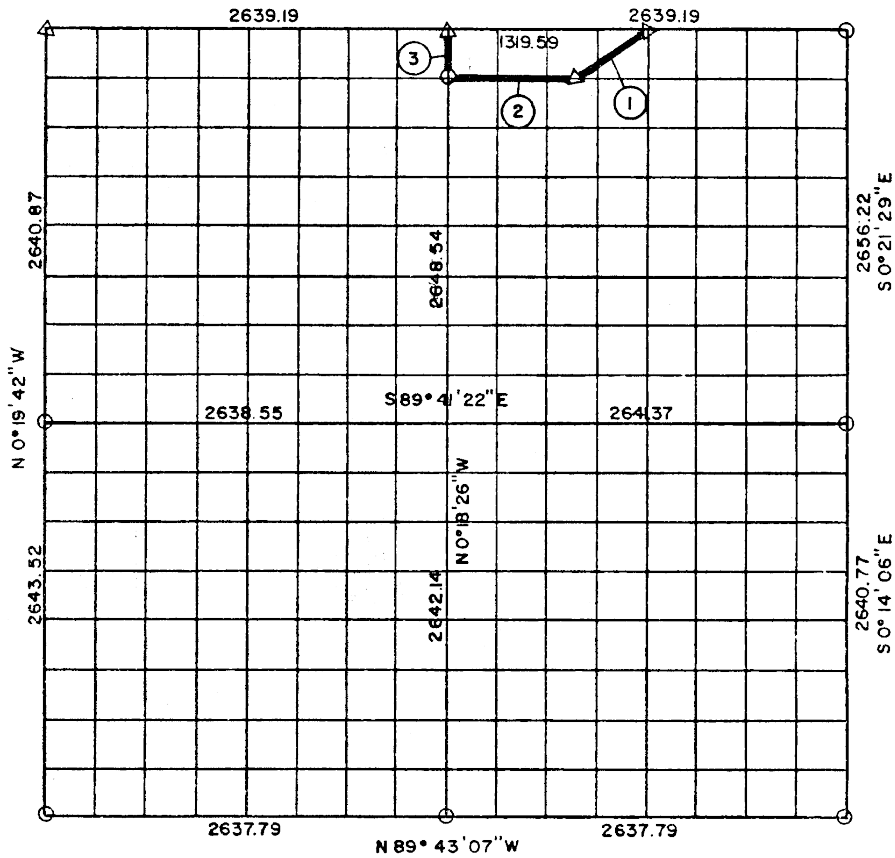
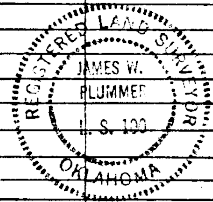


PARTIAL BOUNDARY SURVEYS
 AREA "B"
 EUFAULA LAKE, OKLAHOMA
 Performed Under Contract Number DACW 56-77-C-0103
 SEC. 2, T 6 N, R 15 E PITTSBURG COUNTY, OK.
 S 89° 51' 21" E



Course No.	Distance	Bearing	Course No.	Distance	Bearing	Course No.	Distance	Bearing
1	593.96	N 56° 05' 29" E						
2	824.84	S 89° 46' 33" E						
3	331.93	N 0° 18' 26" W						



Field Book No. E-1289 Date: 1977
PLUMMER - BRUMMETT, INC. 515
 CONSULTING ENGINEERS & SURVEYORS
 1736 E. 59th Pl., Tulsa, Okla., 74103, Tel. (918) 939-2251

- LEGEND**
- ▲ MONUMENT
 - ORIGINAL CORNER
 - 1" IRON PIN

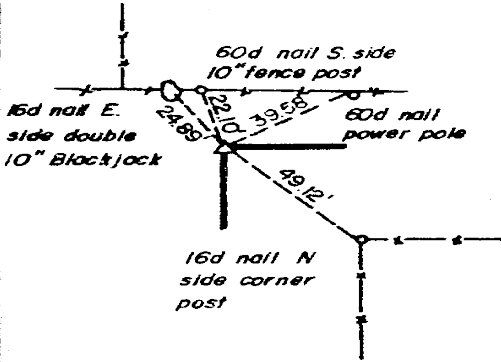
Under the Supervision of
 U.S. ARMY ENGINEER DISTRICT, TULSA
 CORPS OF ENGINEERS

REGISTERED LAND SURVEYOR

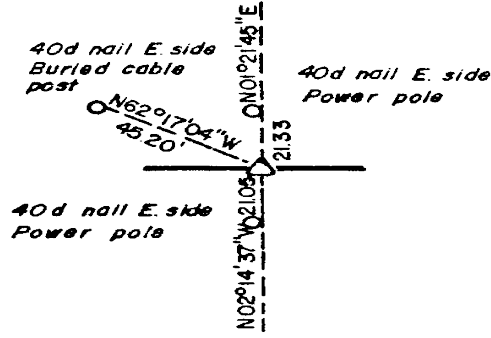
CERTIFICATE OF SURVEY
 I HEREBY CERTIFY THAT THE
 ABOVE PLAT IS A TRUE AND
 CORRECT REPRESENTATION OF
 THE SURVEY MADE IN SECTION
 2, T 6 N, R 15 E, PITTSBURG
 COUNTY, OKLAHOMA.

EUFAULA LAKE
AREA "B"
SECTION AND QUARTER SECTION CORNER
REFERENCES FOR
SEC. 2 , T 6 N, R 15 E, PITTSBURG COUNTY, OK.

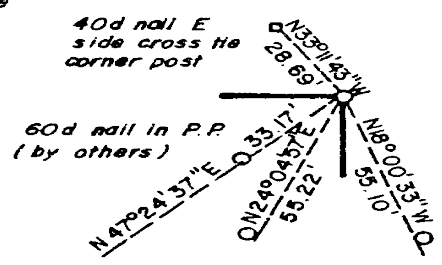
N.W. CORNER



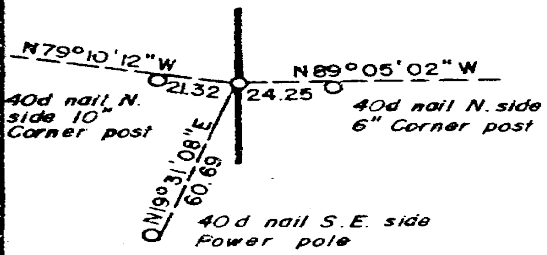
NORTH 1/4 COR.



N.E. CORNER

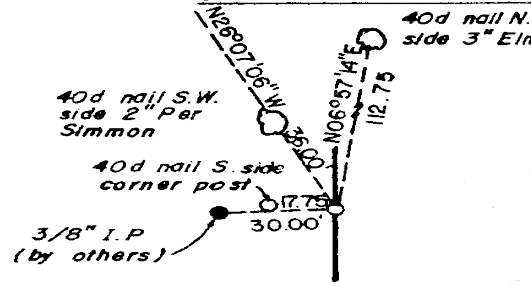


WEST 1/4 COR.

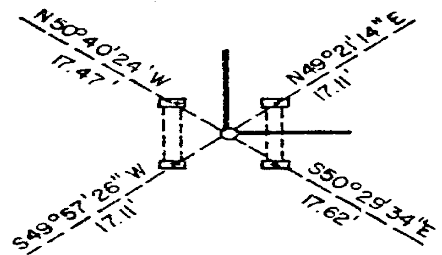


SCALE: 1" = 50'

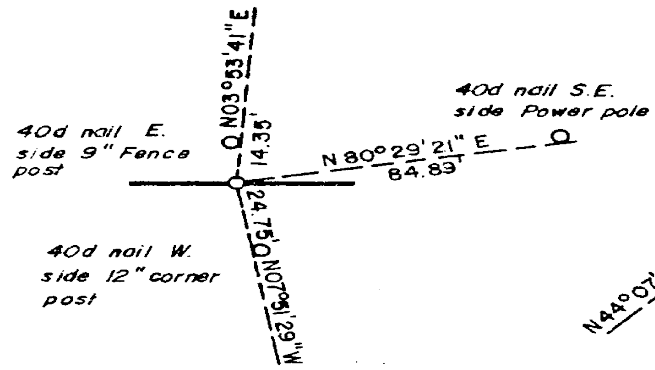
EAST 1/4 COR.



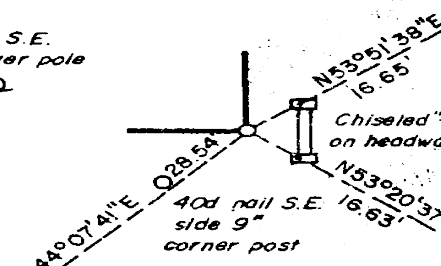
S.W. CORNER



SOUTH 1/4 COR.



S.E. CORNER



NOTE: All references are chiseled "X" on concrete headwalls

LEGEND

- ▲ MONUMENT
- ORIGINAL CORNER
- 1" IRON PIN

PLUMMER-BRUMMETT, INC.
CONSULTING ENGINEERS & SURVEYORS
1736 E. 59th Pl., Tulsa, Okla., 74105, Tel. (918) 939-2251

Under the Supervision of
U.S. ARMY ENGINEER DISTRICT, TULSA
CORPS OF ENGINEERS

REGISTERED LAND SURVEYOR
L. S. 100
REGISTERED LAND SURVEYOR