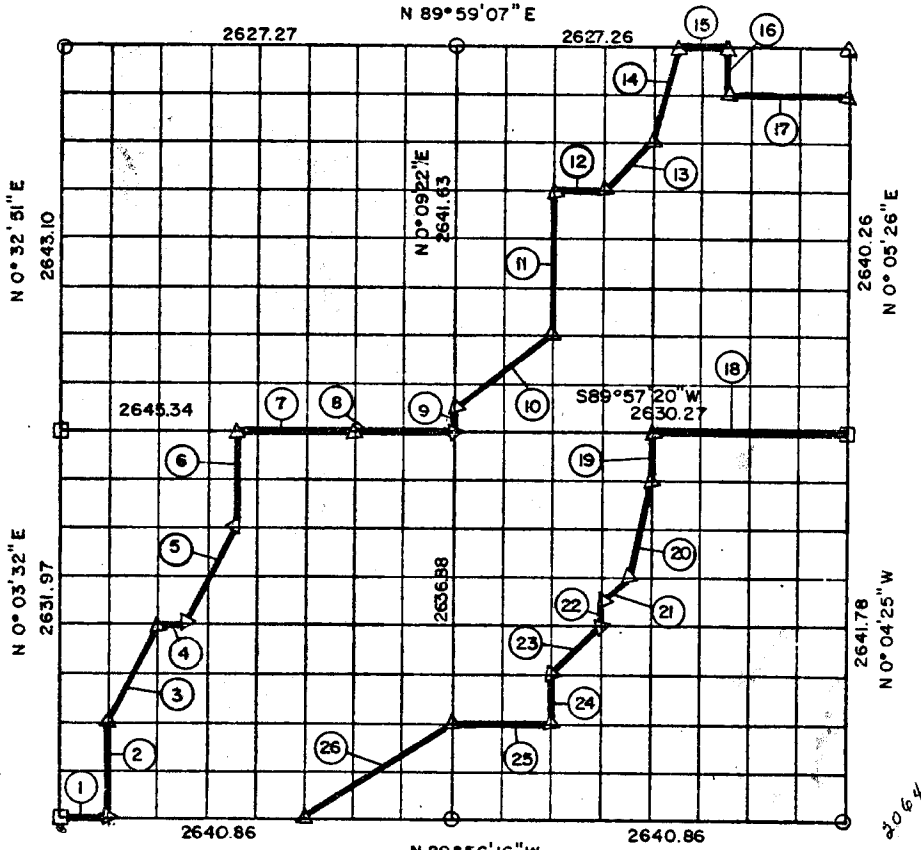


PARTIAL BOUNDARY SURVEYS  
AREA "B"

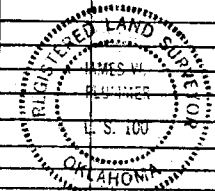
EUFAULA LAKE, OKLAHOMA

Performed Under Contract Number DACW 56-77-C-0103

SEC. 36, T 6 N, R 15 E PITTSBURG COUNTY, OK.



Course No.	Distance	Bearing	Course No.	Distance	Bearing	Course No.	Distance	Bearing
1	330.11	N89°56'16" W	15	328.41	N 89°59'07" E			
2	659.14	S0°04'20" W	16	330.09	N0°06'40" E			
3	736.74	S26°42'53" W	17	821.14	S89°58'53" W			
4	165.19	N89°59'29" W	18	1315.14	S 89°57'20" W			
5	736.84	S26°44'30" W	19	329.92	N 0°02'27" E			
6	658.98	S 0°06'03" W	20	680.18	N 14°02'55" E			
7	826.67	S89°57'20" W	21	257.68	N 39°47'06" E			
8	661.34	S89°57'20" W	22	131.84	N 0°04'12" E			
9	163.10	N0°09'22" E	23	466.49	N 45°01'32" E			
10	824.42	S53°02'12" W	24	329.76	N 0°05'54" E			
11	990.48	S 0°08'22" W	25	659.55	S 89°57'50" E			
12	328.55	S 89°58'26" W	26	1190.58	N 56°26'26" E			
13	466.35	S 44°54'47" W						
14	680.73	S 14°04'53" W						



Field Book No. E-1288

Date: 1977

577  
PLUMMER-BRUMMETT, INC.  
CONSULTING ENGINEERS & SURVEYORS  
1736 E. 59th Pl., Tulsa, Okla., 74105, Tel. (918) 939-2251

Under the Supervision of

U.S. ARMY ENGINEER DISTRICT, TULSA  
CORPS OF ENGINEERS

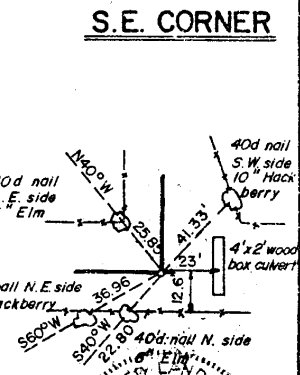
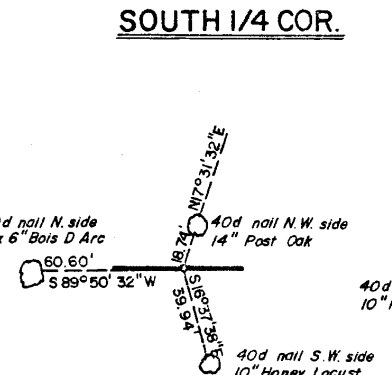
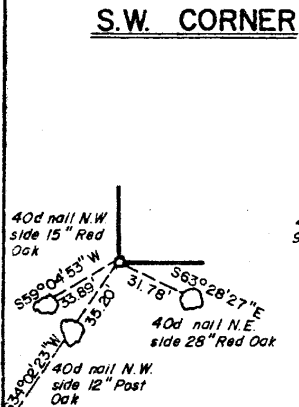
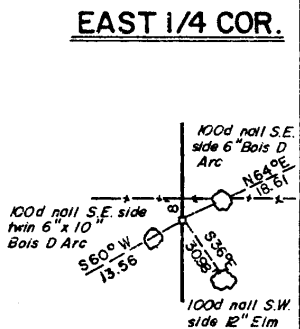
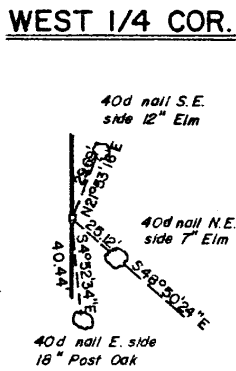
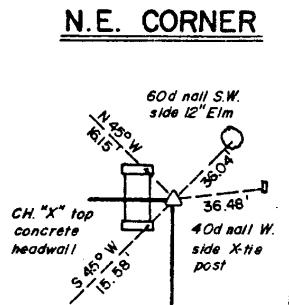
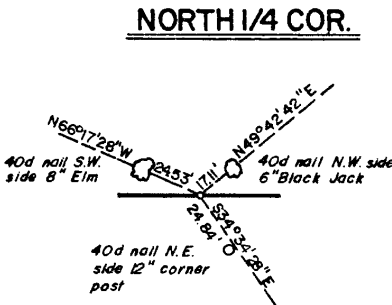
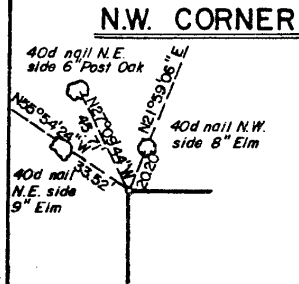
CERTIFICATE OF SURVEY  
I HEREBY CERTIFY THAT THE  
ABOVE PLAT IS A TRUE AND  
CORRECT REPRESENTATION OF  
THE SURVEY MADE IN SECTION  
36, T 6 N, R 15 E, PITTSBURG  
COUNTY, OKLAHOMA.

*James W. Plummer*  
REGISTERED LAND SURVEYOR

LEGEND

- A MONUMENT
- ORIGINAL CORNER
- 1" IRON PIN

EUFAULA LAKE  
AREA "B"  
SECTION AND QUARTER SECTION CORNER  
REFERENCES FOR  
SEC. 36, T 6 N, R 15 E, PITTSBURG COUNTY, OK.



**LEGEND**  
A MONUMENT  
D ORIGINAL CORNER  
O 1" IRON PIN

**PLUMMER-BRUMMETT, INC.**  
CONSULTING ENGINEERS & SURVEYORS  
1736 E. 59th Pl., Tulsa, Okla., 74105, Tel. (918) 939-2251  
Under the Supervision of  
**U.S. ARMY ENGINEER DISTRICT, TULSA**  
CORPS OF ENGINEERS

FIELD BOOK NO. E-1288  
JAMES W. PLUMMER  
DATE 1977  
REGISTERED LAND SURVEYOR  
OKLAHOMA  
100