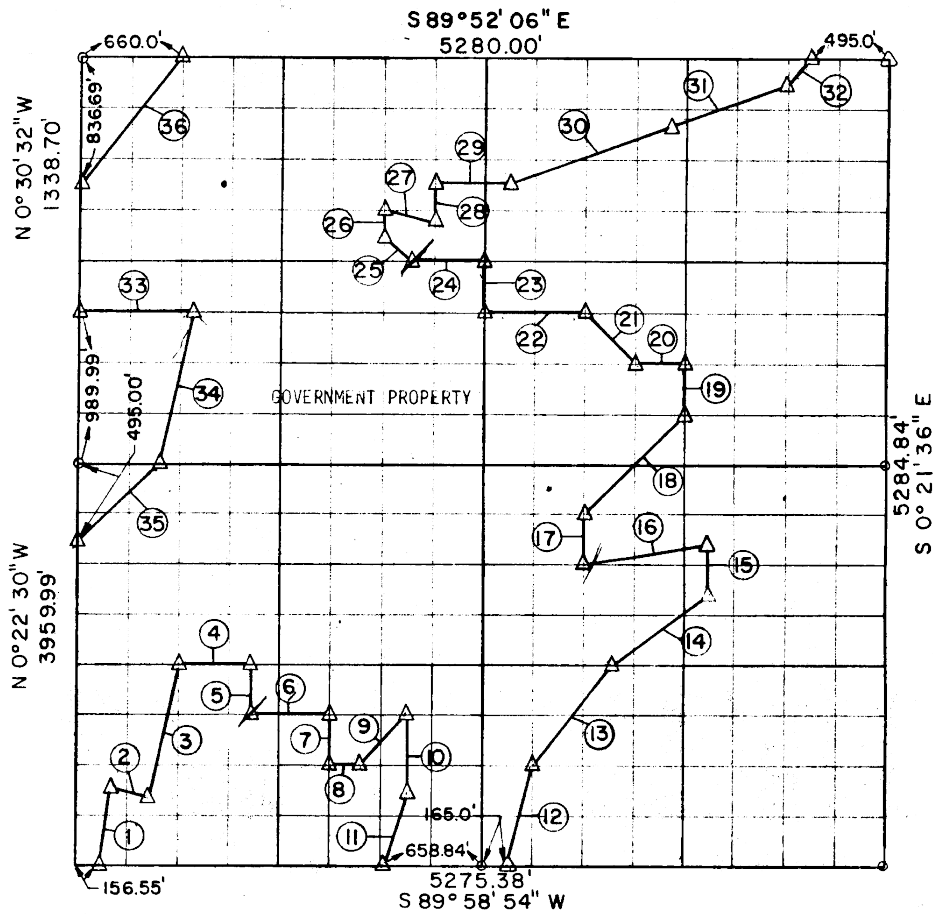


SEC. 3 - 6 - N R - 15 - E COUNTY PITTSBURG



COURSE NUMBER	DISTANCE	BEARING	COURSE NUMBER	DISTANCE	BEARING
1	496.86	N 10° 41' 35" E	19	330.00	N 0° 21' 36" W
2	205.40	S 76° 21' 07" E	20	330.00	N 89° 58' 54" W
3	905.93	N 13° 38' 53" E	21	468.06	N 45° 11' 06" W
4	481.71	N 89° 58' 53" E	22	660.02	S 89° 58' 54" W
5	330.00	S 0° 22' 56" E	23	330.06	N 0° 21' 34" W
6	494.71	N 89° 58' 53" E	24	495.00	S 89° 58' 54" W
7	330.00	S 0° 22' 56" E	25	235.18	N 45° 05' 26" W
8	164.71	N 89° 58' 53" E	26	204.15	N 0° 21' 34" W
9	464.93	N 44° 45' 52" E	27	333.49	S 82° 07' 15" E
10	495.00	S 0° 21' 34" E	28	174.39	N 0° 21' 34" W
11	520.69	S 18° 04' 53" W	29	495.00	N 89° 52' 04" E
12	680.15	N 13° 56' 54" E	30	992.76	N 69° 59' 24" E
13	820.75	N 36° 27' 39" E	31	934.32	N 69° 59' 24" E
14	822.56	N 52° 59' 39" E	32	234.00	N 44° 28' 54" E
15	330.00	N 0° 21' 36" W	33	720.71	N 89° 58' 53" E
16	840.30	S 78° 39' 39" W	34	1020.47	S 14° 00' 45" W
17	330.00	N 0° 21' 36" W	35	682.47	S 43° 29' 19" W
18	930.59	N 44° 48' 24" E	36	1059.86	N 40° 48' 08" E

Field Book No. E-147 Date 8-12-71  
 POE AND ASSOCIATES, INC., - ENGINEERS  
 Under the Supervision of  
 U. S. ARMY CORPS OF ENGINEERS, TULSA DISTRICT

CERTIFICATE OF SURVEY  
 I hereby certify that the above plat is a true and correct representation of the survey made in Section 13, T 8 N, R 14 E, Pittsburg County, Oklahoma.

LEGEND

- △ MONUMENT
- ORIGINAL STONE
- IRON PIN



Robert C. Poe, 514  
 Registered Land Surveyor No. 61