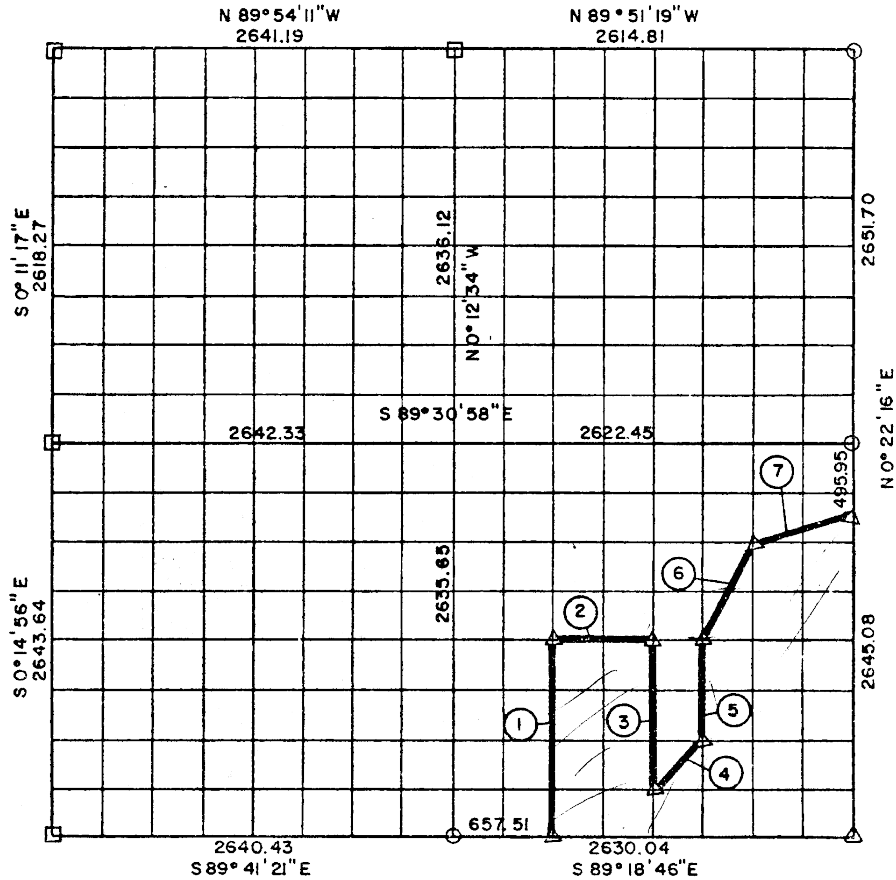


PARTIAL BOUNDARY SURVEYS
AREA "B"

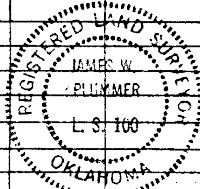
EUFAULA LAKE, OKLAHOMA

Performed Under Contract Number DACW 56-77-C-0103

SEC. 4, T 6 N, R 15 E PITTSBURG COUNTY, OK.



Course No.	Distance	Bearing	Course No.	Distance	Bearing	Course No.	Distance	Bearing
1	1319.00	$N 0^{\circ} 15' 01'' W$						
2	656.56	$S 89^{\circ} 24' 52'' W$						
3	990.14	$N 0^{\circ} 17' 26'' W$						
4	461.98	$N 45^{\circ} 02' 16'' E$						
5	660.38	$N 0^{\circ} 18' 40'' W$						
6	733.03	$N 26^{\circ} 16' 15'' E$						
7	674.06	$N 76^{\circ} 20' 23'' E$						



Field Book No. E-1291

Date: 1977

513
PLUMMER - BRUMMETT, INC.
 CONSULTING ENGINEERS & SURVEYORS
 1736 E. 59th Pl., Tulsa, Okla., 74105, Tel. (918) 939-2251

CERTIFICATE OF SURVEY
 I HEREBY CERTIFY THAT THE
 ABOVE PLAT IS A TRUE AND
 CORRECT REPRESENTATION OF
 THE SURVEY MADE IN SECTION
 4, T 6 N, R 15 E, PITTSBURG
 COUNTY, OKLAHOMA.

LEGEND

- ▲ MONUMENT
- ORIGINAL CORNER
- 1" IRON PIN

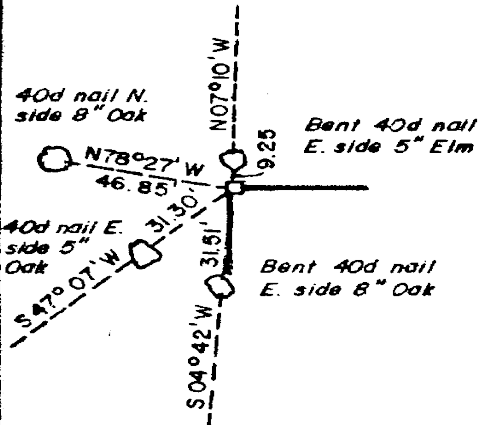
Under the Supervision of

U.S. ARMY ENGINEER DISTRICT, TULSA
 CORPS OF ENGINEERS

REGISTERED LAND SURVEYOR

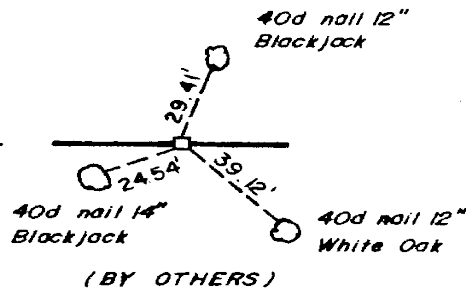
EUFAULA LAKE
AREA "B"
SECTION AND QUARTER SECTION CORNER
REFERENCES FOR
SEC. 4 , T 6 N, R 15 E, PITTSBURG COUNTY, OK.

N.W. CORNER



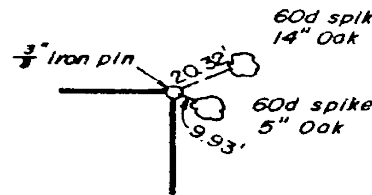
(ALL REFERENCES BY OTHERS)

NORTH 1/4 COR.



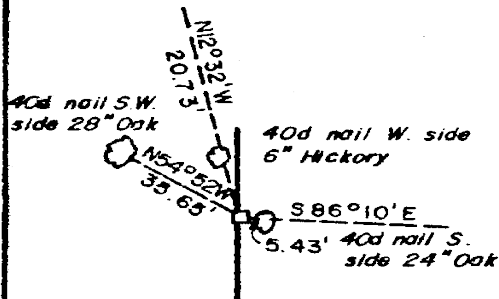
(BY OTHERS)

N.E. CORNER



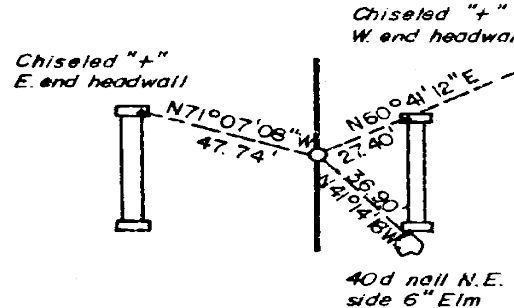
(BY OTHERS)

WEST 1/4 COR.



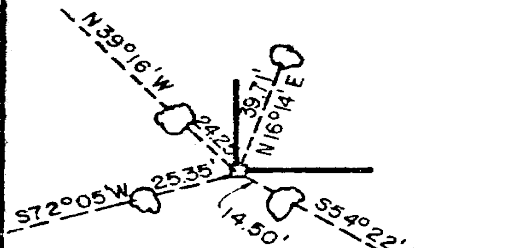
(ALL REFERENCES BY OTHERS)

EAST 1/4 COR.



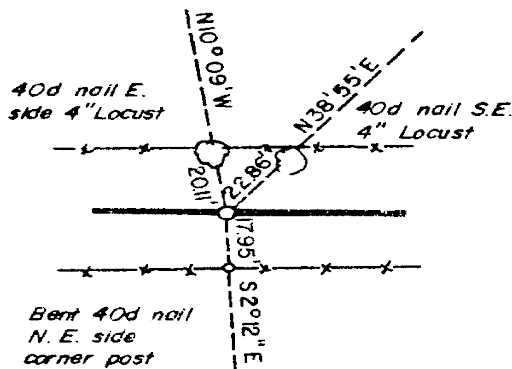
SCALE: 1" = 50'

S.W. CORNER



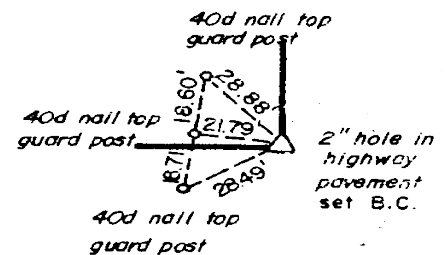
(ALL REFERENCES BY OTHERS)

SOUTH 1/4 COR.



(ALL REFERENCES BY OTHERS)

S.E. CORNER



LEGEND

- ▲ MONUMENT
- ORIGINAL CORNER
- 1" IRON PIN

PLUMMER-BRUMMETT, INC.
CONSULTING ENGINEERS & SURVEYORS
1736 E. 59th Pl., Tulsa, Okla., 74105, Tel. (918) 939-2251

Under the Supervision of
U.S. ARMY ENGINEER DISTRICT, TULSA
CORPS OF ENGINEERS

FIELD BOOK 186-1891

DATE 1977 ES W.

PLUMMER

REGISTERED LAND SURVEYOR