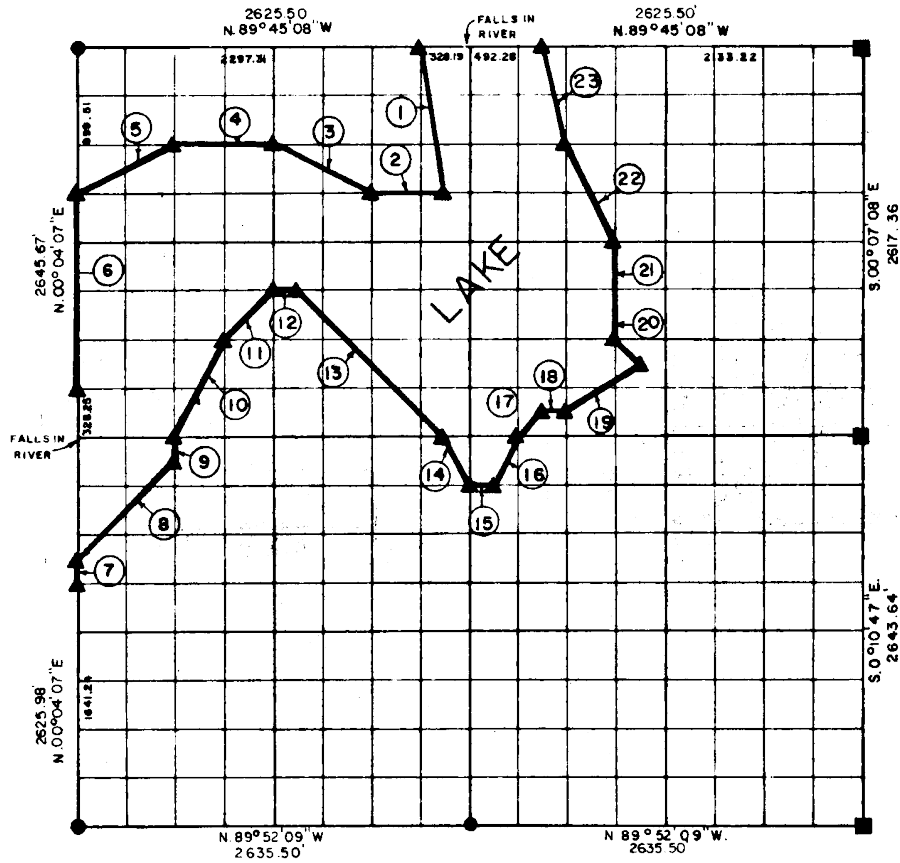


**REVISED"
PARTIAL BOUNDARY SURVEYS
EUFAULA LAKE
OKLAHOMA**

Performed Under Contract Number DACW 56-75-C-0126

SEC. 5, T. 6 N., R. 15 E., COUNTY PITTSBURG



Course No.	Distance	Bearing	Course No.	Distance	Bearing
1	1000.78'	S.09°28'17"E	14	368.03'	S.26°33'56"E
2	492.63'	S.89°56'35"W	15	164.37'	N.89°57'46"E
3	735.09'	N.63°18'31"W	16	368.18'	N.26°27'54"E
4	656.69'	N.89°57'19"W	17	232.72'	N.44°51'38"E
5	736.49'	S.63°08'55"W	18	164.30'	N.89°55'36"E
6	1317.91'	S.00°04'07"W	19	593.08'	N.56°08'10"E
7	164.12'	N.00°04'07"E	20	232.70'	N.44°58'35"W
8	930.23'	N.45°03'44"E	21	659.56'	N.00°04'11"W
9	164.26'	N.00°02'29"E	22	731.95'	N.26°43'06"W
10	735.44'	N.28°35'07"E	23	675.81'	N.14°06'44"W
11	465.40'	N.44°56'22"E			
12	164.29'	N.89°51'58"E			
13	1394.32'	S.45°01'17"E			

CERTIFICATE OF SURVEY

I hereby Certify That The Above Plot is a True and Correct Representation of The Survey Made in Section 5, T. 6 N., R. 15 E., COUNTY, OKLAHOMA

Frank P. Pierce
Registered Professional Engineer
Registered Land Surveyor

Field Book No. E-1200 Date 7-11-75 51a

MAPCO ENGINEERING CORPORATION

Under The Supervision Of

**U.S. ARMY ENGINEER DISTRICT, TULSA
CORPS OF ENGINEERS**

SHEET 1 of 2

LEGEND

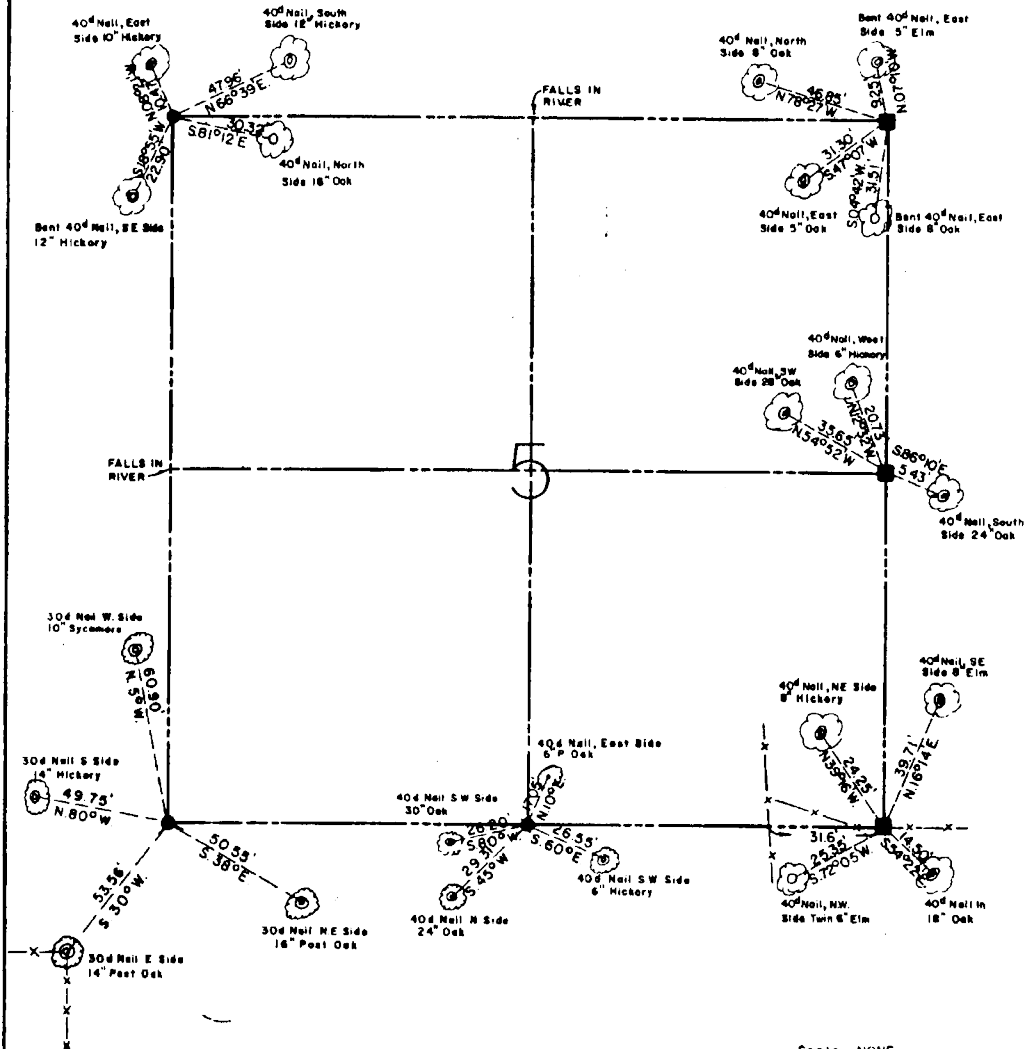
- ▲ MONUMENT
- ORIGINAL CORNER
- IRON PIN

Revised Oct. 1977

REVISED"
EUFULA LAKE
OKLAHOMA

SECTION AND QUARTER SECTION CORNER
REFERENCES FOR

SEC. 5, T 6 N, 15E, 1. M. COUNTY-PITTSBURG



Scale: NONE
Date: 7-11-75
Field book No. E-1200

LEGEND

- △ - Monument
- - Original Corner
- - Iron pin

Revised October, 77