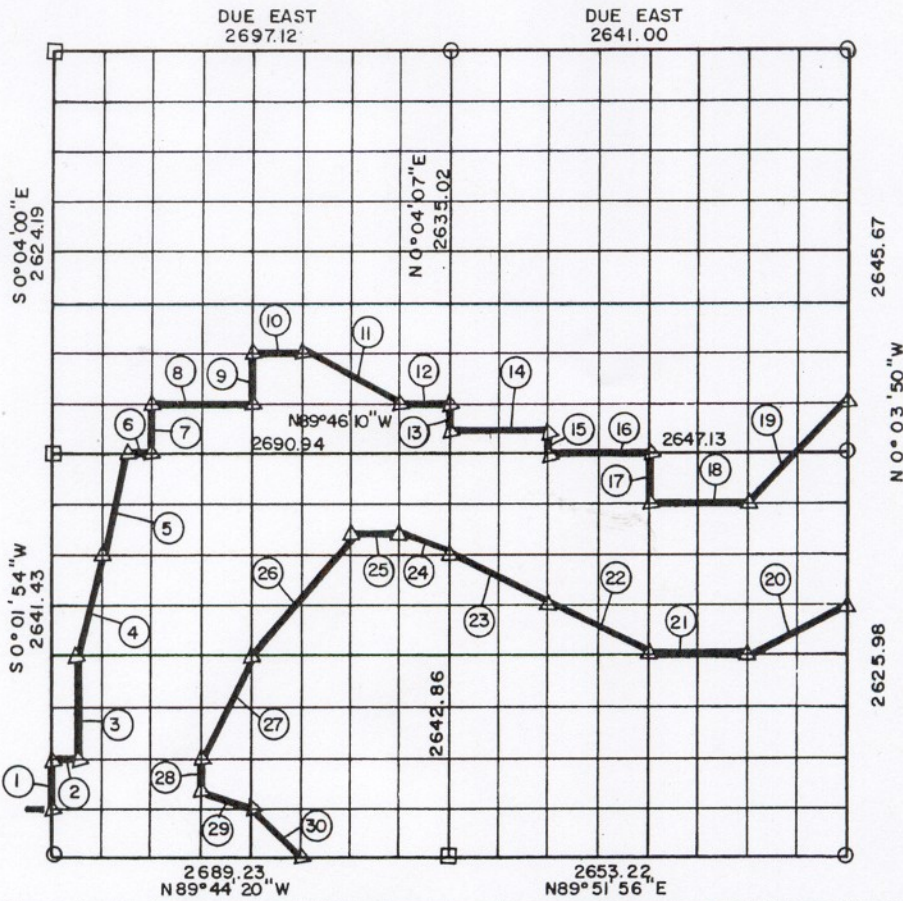


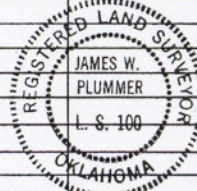
PARTIAL BOUNDARY SURVEYS  
AREA "B"

EUFAULA LAKE, OKLAHOMA  
Performed Under Contract Number DACW 56-77-C-0103

SEC. 6, T 6 N, R 15 E PITTSBURG COUNTY, OK.



Course No.	Distance	Bearing	Course No.	Distance	Bearing	Course No.	Distance	Bearing
1	330.18	S0°01'54"W	15	164.08	N0°02'07"E	29	370.06	N63°14'36"W
2	209.44	N89°44'46"W	16	661.78	N89°46'10"W	30	468.09	N44°51'49"W
3	660.38	N0°07'20"E	17	329.30	N0°00'09"E			
4	680.42	N14°10'46"E	18	661.97	N89°48'53"W			
5	680.44	N14°10'15"E	19	930.29	S45°17'58"W			
6	165.22	N89°46'10"W	20	738.82	S63°40'12"W			
7	328.05	N0°06'40"E	21	662.54	N89°57'08"W			
8	660.83	N89°46'19"W	22	740.23	N63°26'48"W			
9	328.08	N0°05'49"E	23	740.23	N63°26'48"W			
10	330.37	N89°46'27"W	24	369.92	N63°14'35"W			
11	738.48	N63°23'41"W	25	330.51	N89°45'50"W			
12	330.41	N89°46'19"W	26	1056.42	S38°49'53"W			
13	164.07	N0°04'07"E	27	737.90	S26°43'24"W			
14	661.70	N89°46'14"W	28	165.12	N0°06'16"E			



Field Book No. E-1293

Date: 1977

PLUMMER-BRUMMETT, INC.  
CONSULTING ENGINEERS & SURVEYORS  
1736 E. 59th Pl., Tulsa, Okla., 74105, Tel. (918) 939-2251

Under the Supervision of

U.S. ARMY ENGINEER DISTRICT, TULSA  
CORPS OF ENGINEERS

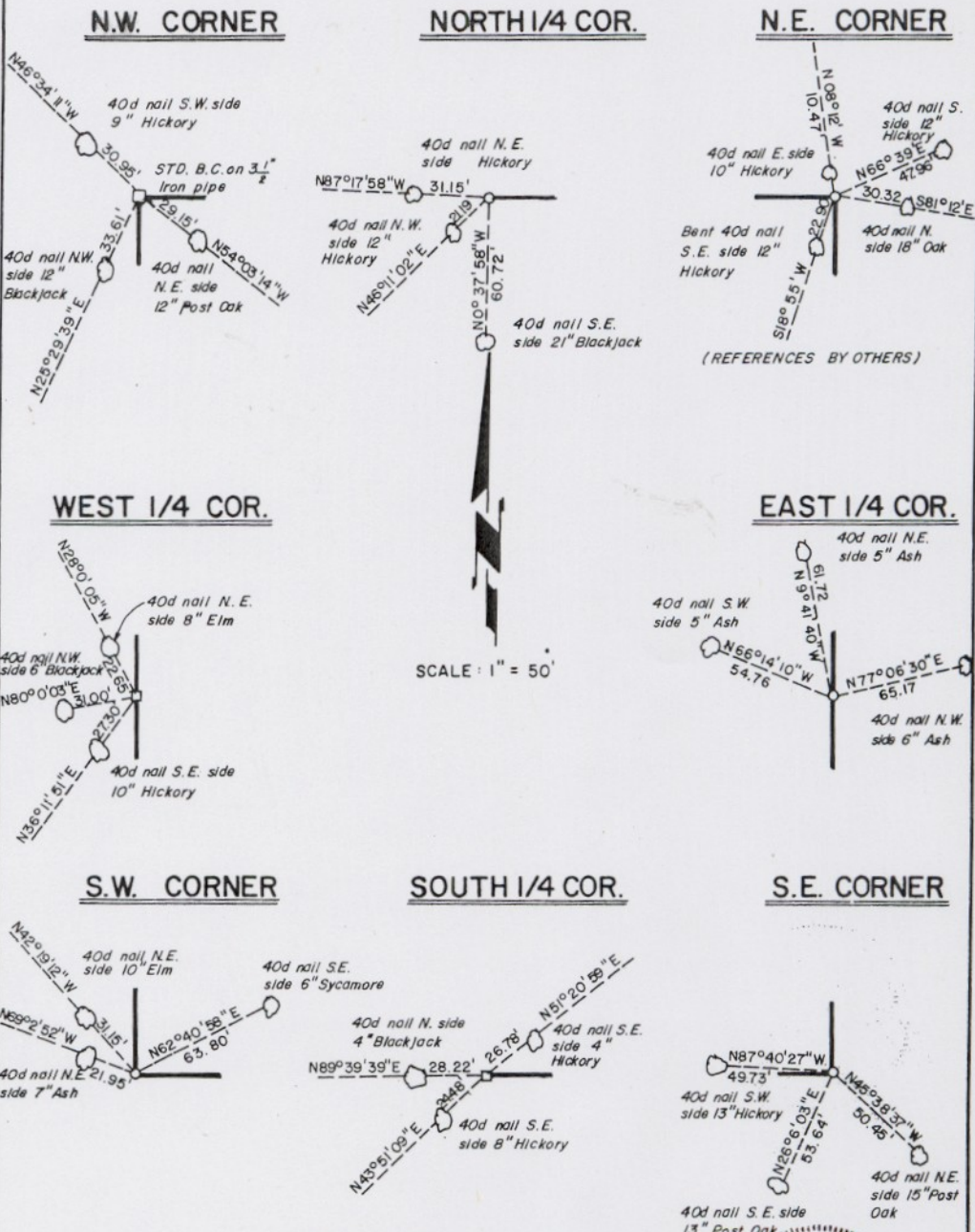
CERTIFICATE OF SURVEY  
I HEREBY CERTIFY THAT THE  
ABOVE PLAT IS A TRUE AND  
CORRECT REPRESENTATION OF  
THE SURVEY MADE IN SECTION  
6, T 6 N, R 15 E, PITTSBURG  
COUNTY, OKLAHOMA.

*James W. Plummer*  
REGISTERED LAND SURVEYOR

LEGEND

- A MONUMENT
- ORIGINAL CORNER
- 1" IRON PIN

EUFAULA LAKE  
 AREA "B"  
 SECTION AND QUARTER SECTION CORNER  
 REFERENCES FOR  
 SEC. 6 , T 6 N, R 15 E, PITTSBURG COUNTY, OK.



- LEGEND**
- A MONUMENT
  - ORIGINAL CORNER
  - 1" IRON PIN

**PLUMMER-BRUMMETT, INC.**  
 CONSULTING ENGINEERS & SURVEYORS  
 1736 E. 59th Pl., Tulsa, Okla., 74105, Tel. (918) 939-2251

Under the Supervision of  
**U.S. ARMY ENGINEER DISTRICT, TULSA**  
 CORPS OF ENGINEERS

FIELD BOOK NO. 1293

REGISTERED SURVEYOR  
 JAMES W. PLUMMER  
 REGISTERED LAND SURVEYOR